

## ENGLISH

Conceptronic 100BRS4

### ! NOTE !

## ENGLISH

**! Note:** For other languages (Dutch, Spanish, German, French, Italian and Portuguese) and more detailed instructions on configuring and using the Broadband Firewall Gateway, **please refer to the manual on the provided CD-ROM.**

## NEDERLANDS

**! Opmerking:** Voor andere talen (Nederlands, Spaans, Duits, Frans, Italiaans en Portugees) en uitgebreide informatie over de configuratie en het gebruik van de Broadband Firewall Gateway **zie de handleiding op de meegeleverde cd-rom.**

## ESPAÑOL

**¡ Nota:** Para otros idiomas (holandés, español, alemán, francés, italiano y portugués) e instrucciones más detalladas sobre la configuración y el empleo del Broadband Firewall Gateway (pasarela cortafuego de banda ancha), **consulte el manual que incluye el CD-ROM provisto.**

## DEUTSCH

**! Hinweis:** Andere Sprachen (Englisch, Holländisch, Spanisch, Französisch, Italienisch und Portugiesisch) und genauere Anweisungen zur Konfiguration und Benutzung des Broadband Firewall Gateway, **sehen Sie bitte im Handbuch auf der mitgelieferten CD-ROM nach.**

## FRANÇAIS

**! Remarque:** Pour obtenir de plus amples informations concernant d'autres langues (néerlandais, espagnol, allemand, français, italien et portugais) ou les instructions relatives à la configuration et l'utilisation de *Broadband Firewall Gateway*, **veuillez consulter le manuel fourni sur le CD-ROM.**

## ITALIANO

**! NB:** Per altre lingue (Olandese, Spagnolo, Tedesco, Francese, Inglese e Portoghese) e per istruzioni più particolareggiate relative al modo di configurazione o di uso del Gateway Firewall a banda larga, **vi preghiamo di consultare il manuale sul CD-ROM** accluso.

## PORTUGUÊS

**! Nota:** Para outras línguas (Holandês, Espanhol, Alemão, Francês, Italiano e Português) e mais instruções pormenorizadas sobre a configuração e utilização do Broadband Firewall Gateway, **por favor consulte o manual no CD-ROM** fornecido.

Conceptronic 100BRS4  
**Quick Start Guide**

**Congratulations on the purchase of your  
Conceptronic Broadband router.**

The enclosed Hardware Installation Guide gives you a step by step explanation of how to install the Conceptronic Broadband Router 100BRS4 on your Notebook/PC. When problems occur, we advise you to go to our **support-site 2-Tech** (go to [www.conceptronic.net](http://www.conceptronic.net), 'Technical support' and click 'on-line support'.) Here you will find a lot of possibilities to solve your problems.

In order to provide the requested support we need the following details from you:

- A clear description of the problem;
- Version number of the drivers you are using (always check the Conceptronic website to see whether you are using the latest version);
- Type of Notebook/PC you are using;
- Operating system you are using

For more information about Conceptronic products, please visit the Conceptronic Web Site: [www.conceptronic.net](http://www.conceptronic.net)

**The Software installation as described below, may be slightly different from the installation on your computer. This depends on the Windows version you are using.**

# ENGLISH

## 1. The Front Panel LEDs

LED		Meaning
1	Power	Lit green when AC power is connected.
2	LAN 1	Lit green when connected at 100 Mbps. Lit orange when connected at 10 Mbps. Flashes when sending/receiving data.
3	LAN 2	
4	LAN 3	
5	LAN 4	
6	WAN	Lit when connected to a WAN device. Flashes when sending/receiving data.
7	PPP/SYS	Lit green when using PPPoE or PPTP client from router. Lit orange when system ready.

## 2. The Rear Ports

**Power (jack)**                      Connect the supplied power adapter to this jack.

**WAN (RJ-45 connector)**                      Connect an UTP Ethernet cable or crossover cable to this port when connecting to the Internet or making other WAN connections.

# ENGLISH

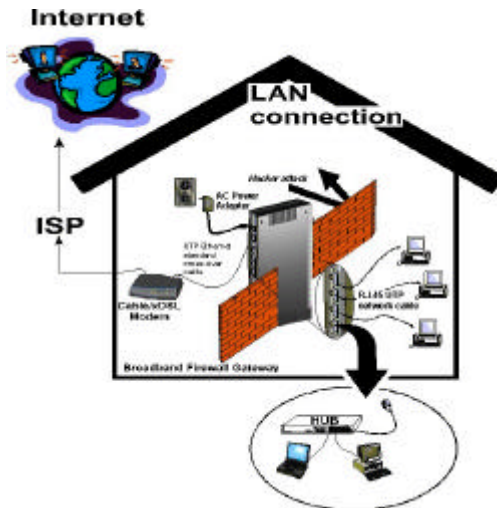
**LAN  
(RJ-45  
connector)**

Connect an UTP Ethernet cable to these four ports when connecting to a LAN of 10Mbps or 100Mbps such as an office or home network.

## 3. Connecting the Broadband Firewall Gateway

Refer to the following steps to connect the Broadband Firewall Gateway to a WAN (Wide Area Network) and a LAN (Local Area Network):

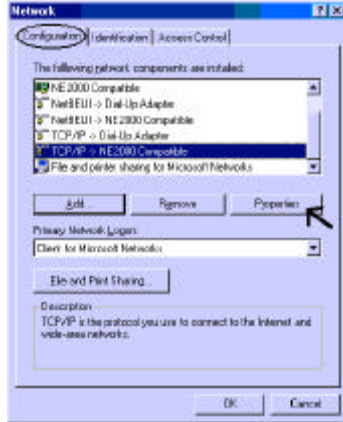
1. Connect the Broadband Firewall Gateway as shown below.
2. Power on the device.
3. Ensure the Power, LAN, and WAN LEDs are lit.



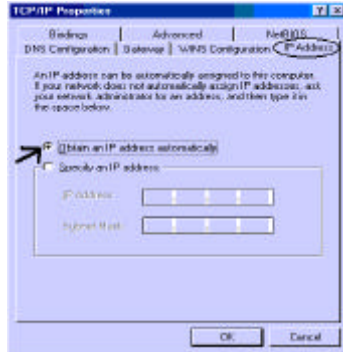
# ENGLISH

## 4. Configuring PC in Windows 95/98(SE)/ME

1. Go to **Start / Settings / Control Panel**. In the Control Panel, double-click on **Network** and choose the **Configuration** tab.
2. Select **TCP/IP -> NE2000 Compatible**, or any Network Interface Card (NIC) in your PC.



3. Select the **Obtain an IP address automatically** radio button.



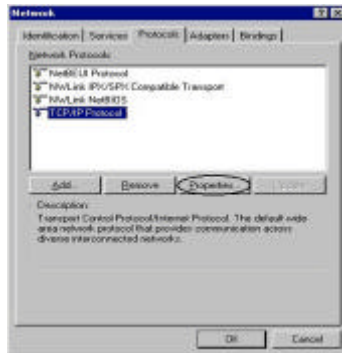
## ENGLISH

- Then select the **DNS Configuration** tab.
- Select the **Disable DNS** radio button and click **OK** to finish the configuration.



## 5. Configuring PC in Windows NT4.0

- Go to **Start / Settings / Control Panel**. In the Control Panel, double-click on **Network** and choose the **Protocols** tab.
- Select **TCP/IP Protocol** and click **Properties**.



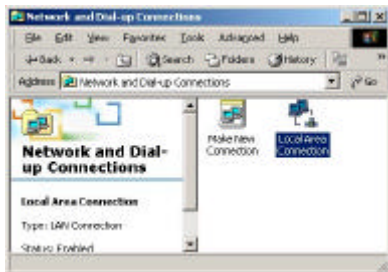
## ENGLISH

3. Select the **Obtain an IP address from a DHCP server** radio button and click **Ok**.



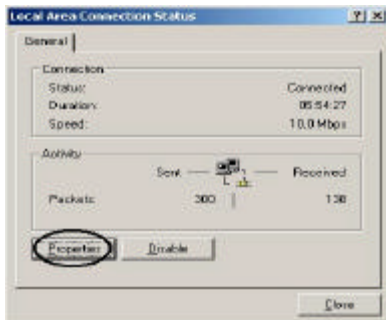
## 6. Configuring PC in Windows 2000

1. Go to **Start / Settings / Control Panel**. In the Control Panel double-click on **Network and Dial-up Connections**.
2. Double-click **Local Area Connection**.

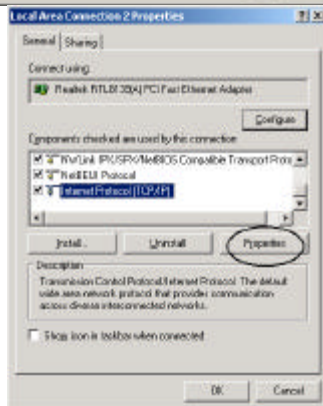


## ENGLISH

3. In the **Local Area Connection Status** window click **Properties**.



4. Select **Internet Protocol (TCP/IP)** and click **Properties**.



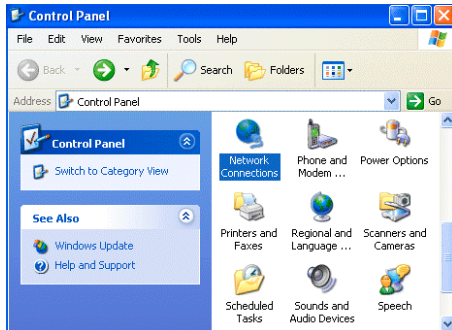
## ENGLISH

5. Select the **Obtain an IP address automatically** and the **Obtain DNS server address automatically** radio buttons.
6. Click **Ok** to finish the configuration.



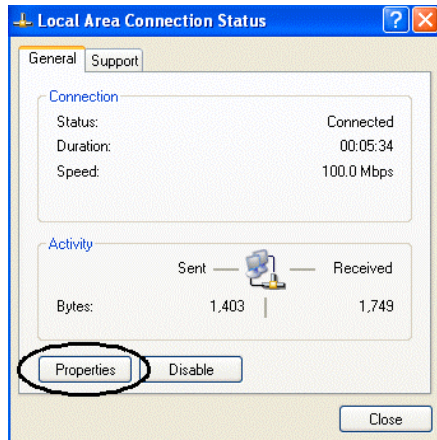
## 7. Configuring PC in Windows XP

1. Go to **Start / Control Panel (in Classic View)**. In the Control Panel, double-click on **Network Connections**.
2. Double-click **Local Area Connection**.

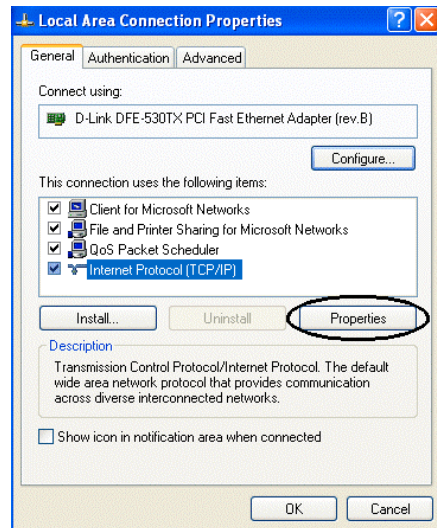


## ENGLISH

3. In the **Local Area Connection Status** window, click **Properties**.

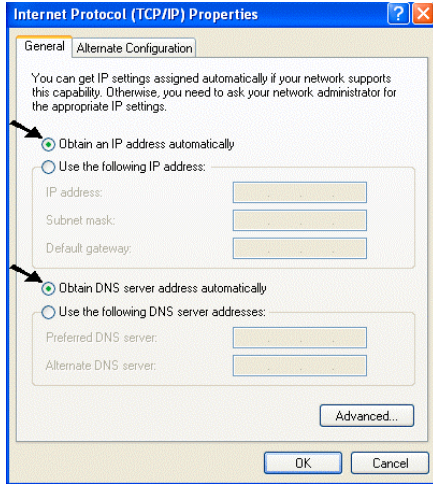


4. Select **Internet Protocol (TCP/IP)** and click **Properties**.



## ENGLISH

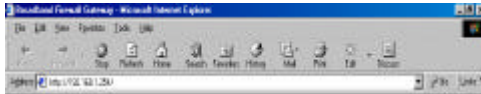
5. Select the **Obtain an IP address automatically** and the **Obtain DNS server address automatically** radio buttons.
6. Click **OK** to finish the configuration.



## 8. Configuring the Broadband Firewall Gateway

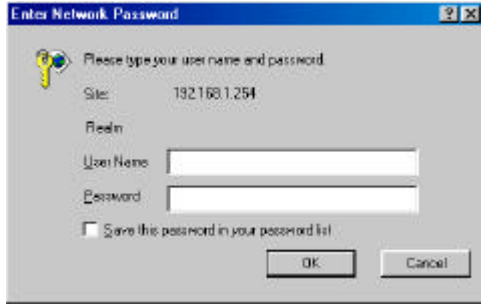
### Note:

- To configure this device, you must have IE 4.01 or higher installed on your PC.
  - To configure the broadband router with a cable or xDSL connection, please visit our website for the online documentation. [www.conceptronic.net](http://www.conceptronic.net)
1. Open web browser and type <http://192.168.1.254> in the browser's address box. This number is the default IP address for this router. Press **Enter**.



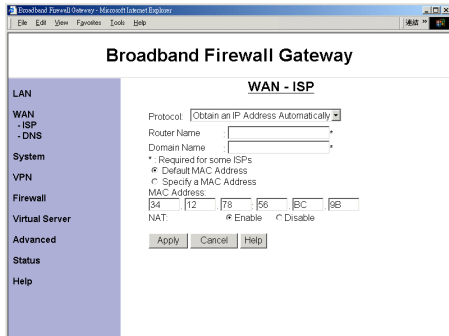
# ENGLISH

- 2. A user name and password prompt will appear. Just click **OK**, there is no password protection in default.

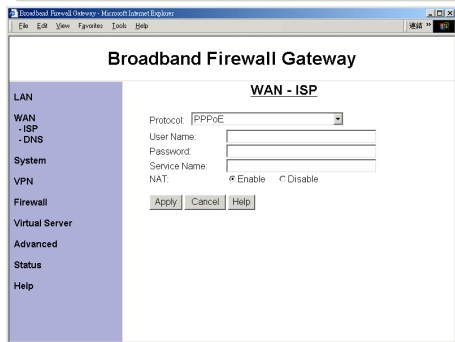


- 3. Click WAN -> ISP in left pane and select one of the connection protocols with remote site such as ISP from the following:

## I. Obtain an IP Address automatically



## II. PPPoE

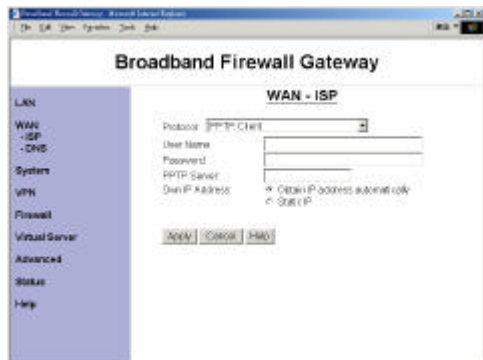


# ENGLISH

? . Fixed IP



? . PPTP Client

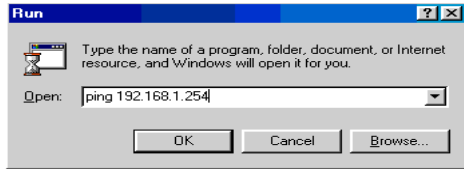


4. Click **Apply** to store all configurations. The broadband firewall gateway will reboot automatically.

## ENGLISH

### 9. Connecting to the Internet

To see if this broadband firewall gateway is visible on the local network, go to **Start / Run**. In the Run dialog box, type “**Ping 192.168.1.254**” and press **OK**.



**Open your Web browser to begin surfing the Internet.**