

## How to setup a Bridged Point to Point connection using two Conceptronic C54APT Access Points



Note:

The Access Points do not have to have the same TCP/IP settings as the rest of the network which they are connected to; they do pass on the data transparent. For configuring purposes you will have to have TCP/IP settings that match the TCP/IP settings of the Access Point(s)

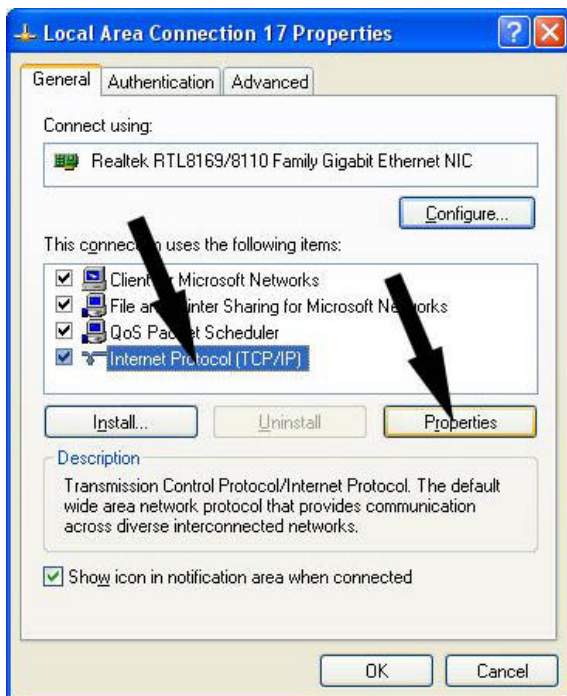
### 1. Change the settings of your network adapter to match the settings of the Access Point



Go to Start ? Control Panel ?  
Network Connections

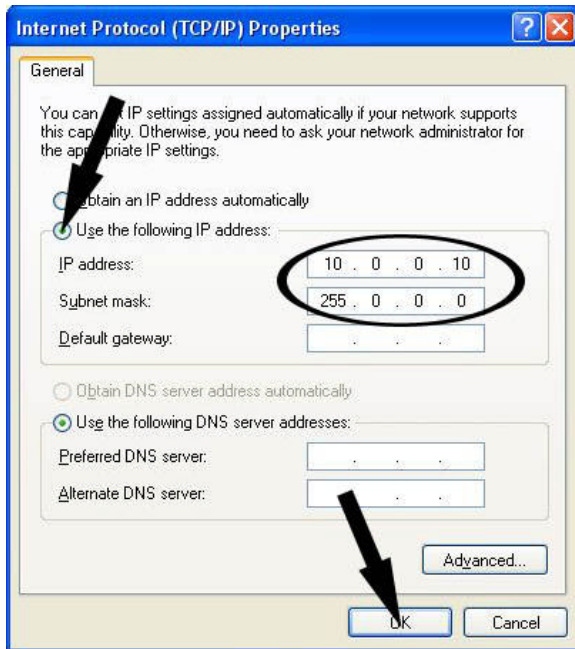
Right click on the Network  
connection

Go to **Properties**



Select **Internet Protocol TCP/IP**

Click **Properties**

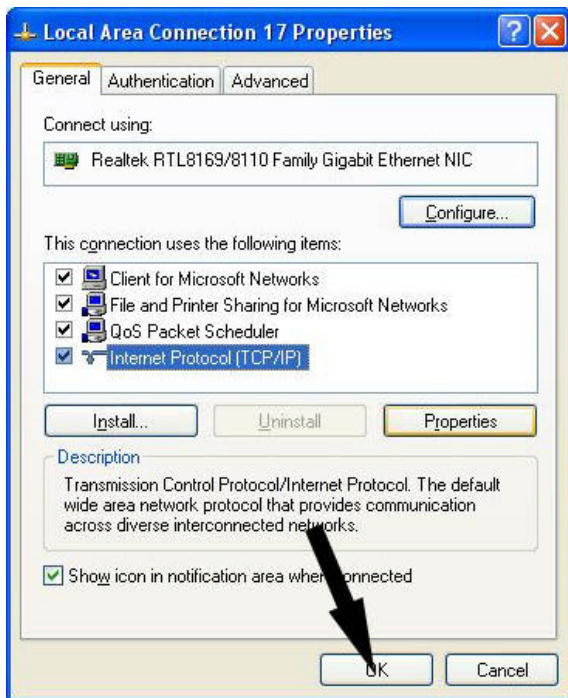


Select **Use the following IP address**

Type an address in the range **10.0.0.X**  
(like the example **10.0.0.10**)

Type the Subnet mask **255.0.0.0**

Click **OK**



Click **OK**

Your computer is now set to configure the Access Points.

## 2. How to setup a Bridged connection using two Conceptronic C54APT Access Points

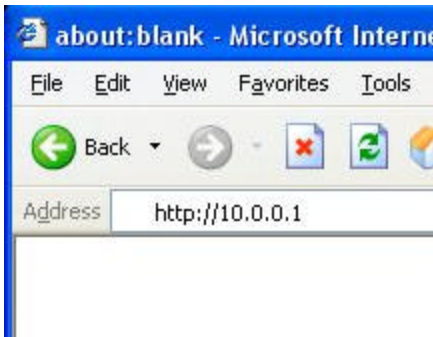
Note:

Before you are able to setup the C54APT as Bridge you have to have the Access Point upgraded to firmware version **C54APT\_FW\_2\_C108AP.tfp**

Please find the firmware file and upgrade instructions on [www.conceptronic.net](http://www.conceptronic.net)

### 2.1 Log-in and configure the first Access Point (Access Point A)

Connect only **Access Point A** to the network and disconnect **Access Point B**.



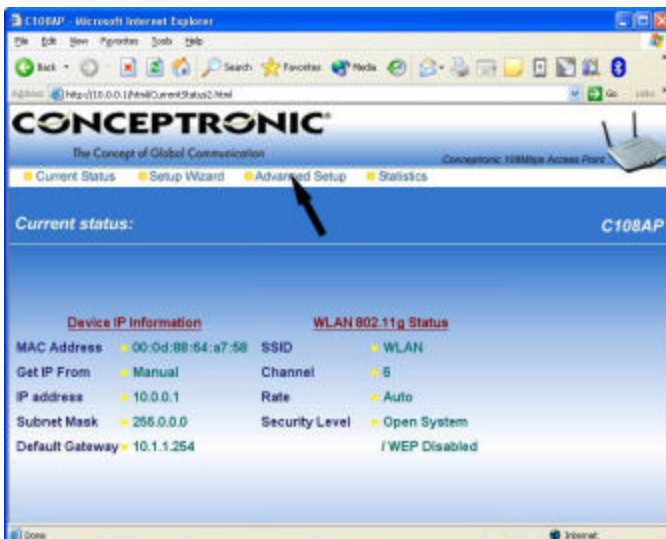
Open your browser

Type the address of the first Access Point  
(standard should be **10.0.0.1**)

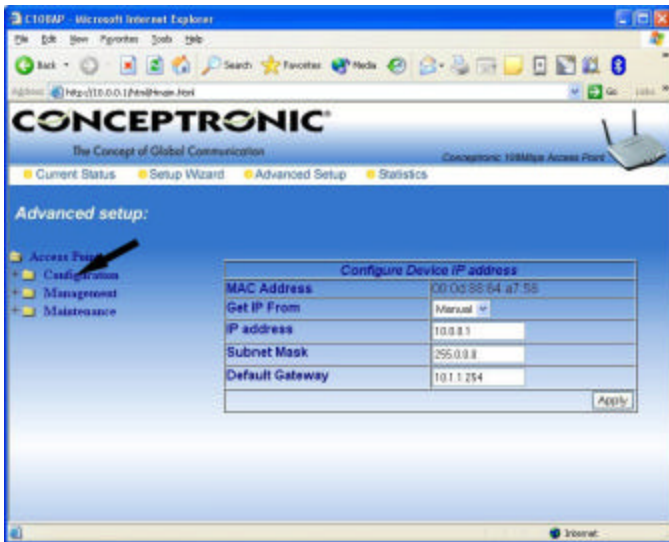


Type the User name and Password  
Defaults are user: **admin** Password: empty)

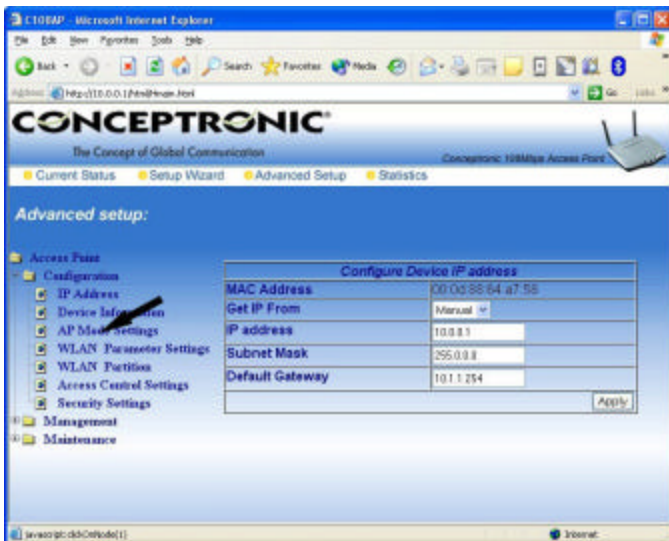
Click **OK**



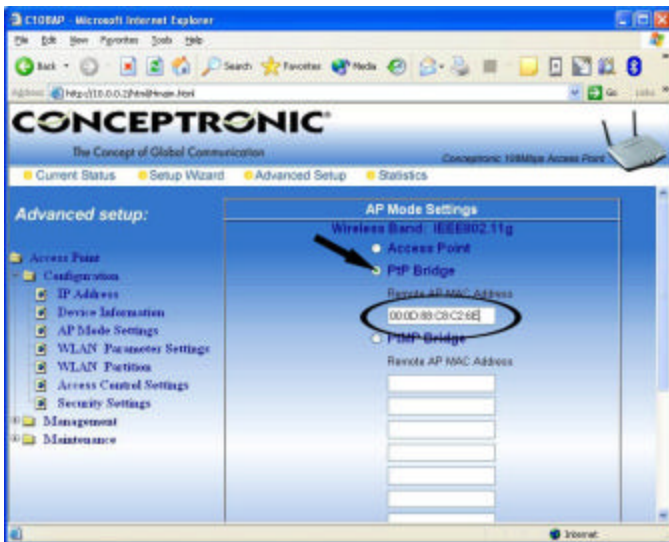
Click **Advanced Setup**



Click **Configuration**



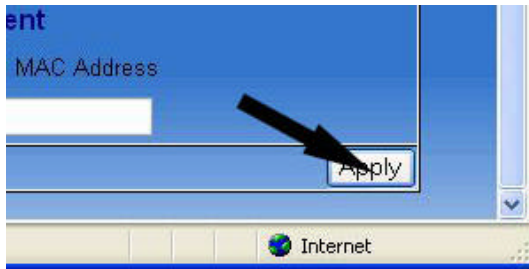
Click **AP Mode Settings**



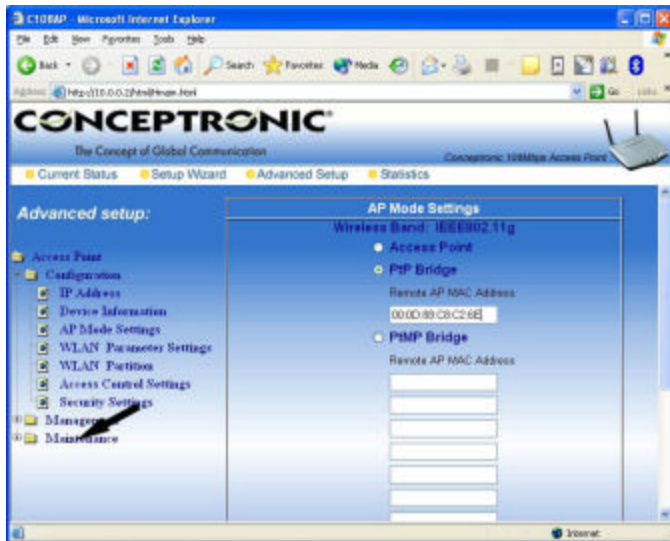
Click **PnP Bridge** and type the MAC Address of **Access Point B**

The MAC address can be found on the bottom of **Access Point B**:

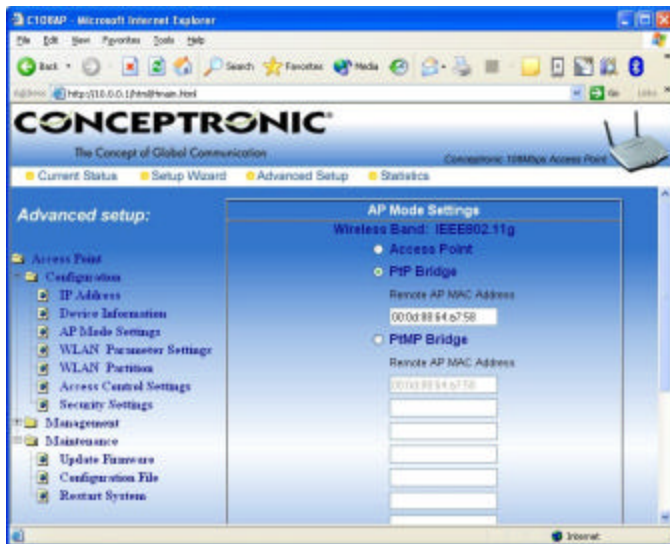




Scroll down and click **Apply**



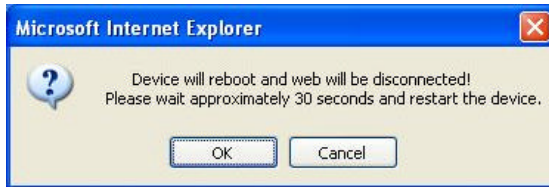
Click **Maintenance**



Click **Restart System**



Click **Restart**



Click **OK**

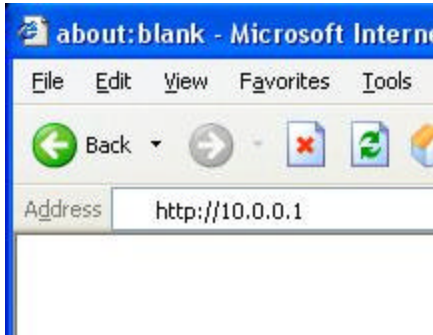
**Access Point A** is now configured correctly.

## 2.2 Log-in and setup a new IP address for the second Access Point (Access Point B)

Connect only **Access Point B** to the network and disconnect **Access Point A**.

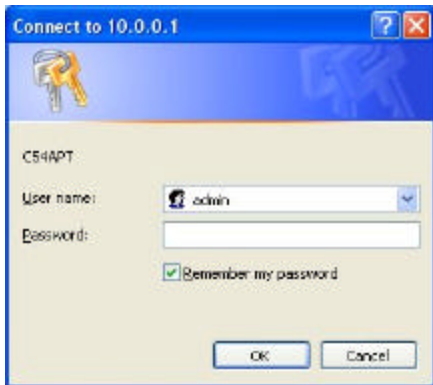
Note:

**Access Point B** has to have a different IP address than **Access Point A** because if both would have the same address they would both not function at all.



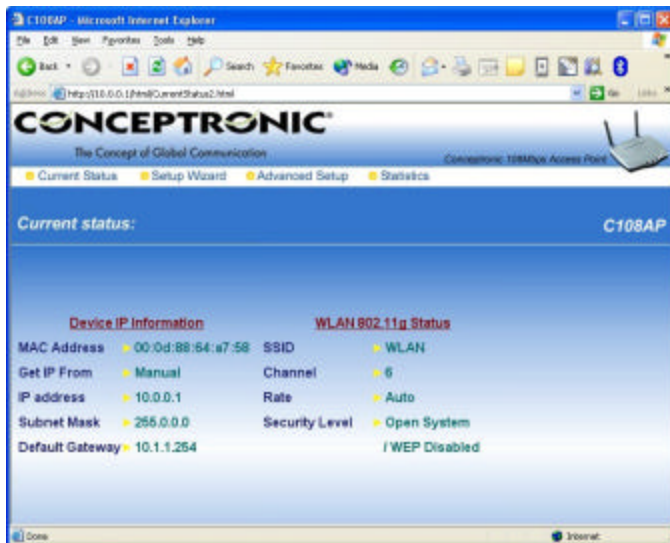
Open your browser

Type the address of the second Access Point (standard should be **10.0.0.1**)

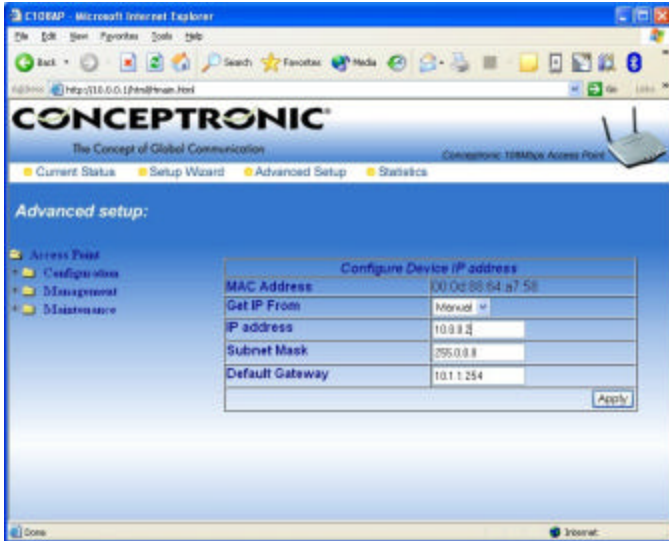


Type the User name and Password (Defaults are user: **admin** Password: empty)

Click **OK**



Click **Advanced Setup**

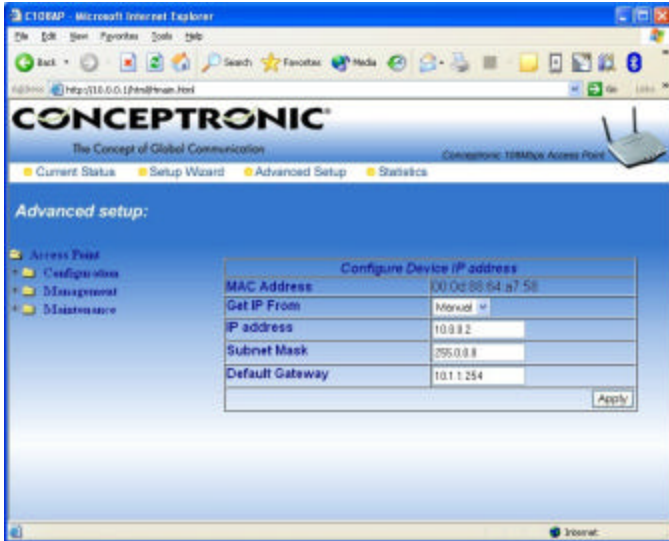


Change the IP address to something in the range **10.0.0.X** but different than the IP from **Access Point A** (like the example **10.0.0.2**)

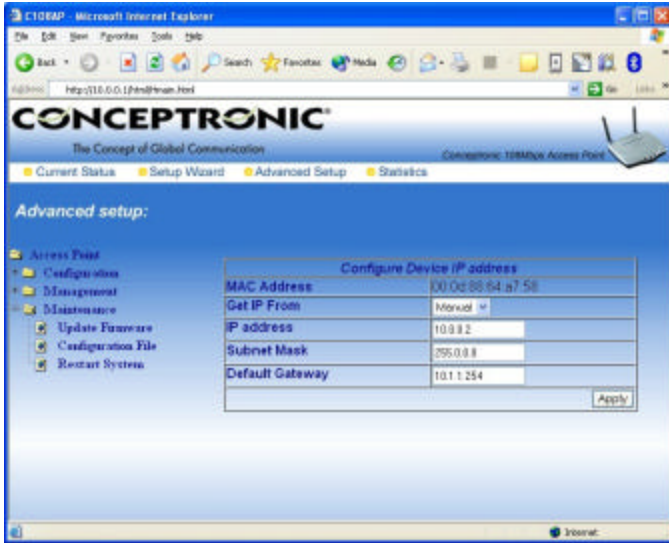
Click **Apply**



Click **OK**



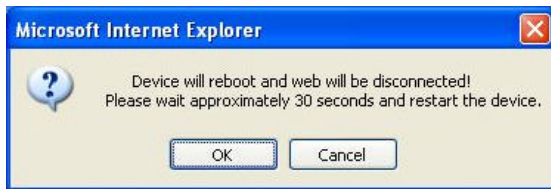
Click **Maintenance**



Click **Restart System**



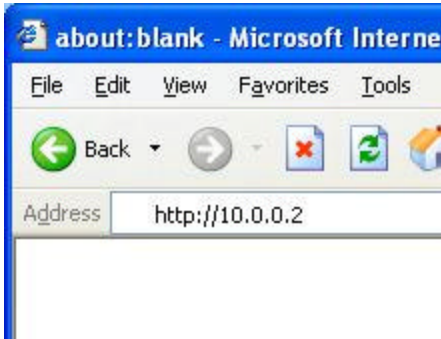
Click **Restart**



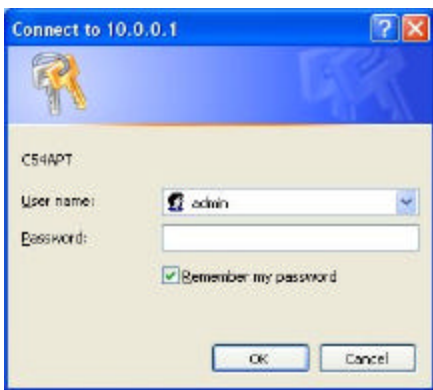
Click **Restart**

Access Point B is now configured with a new IP address.

### 2.3 Log-in and configure the second Access Point (Access Point B)

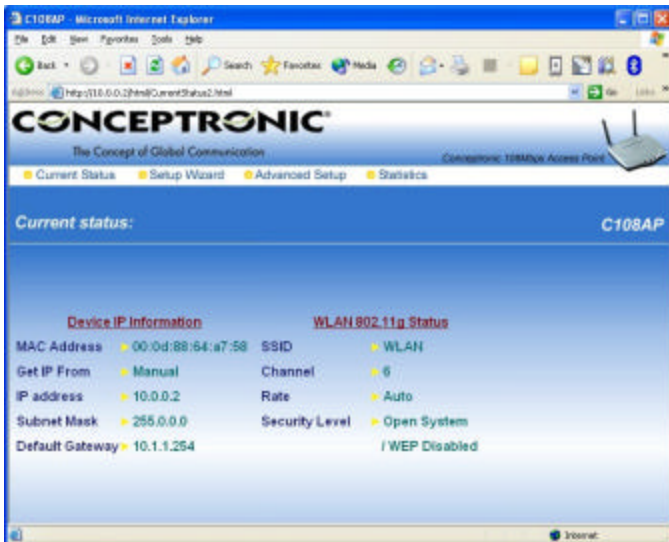


Type the new address of the second Access Point (like the example **10.0.0.2**)

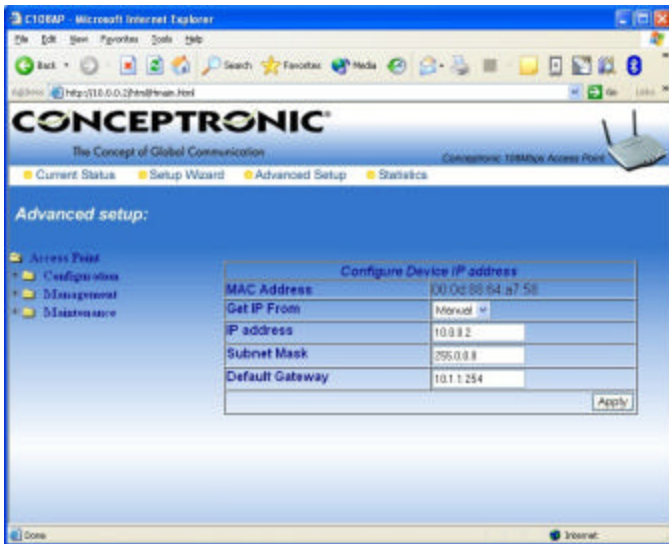


Type the User name and Password  
Defaults are user: **admin** Password: empty)

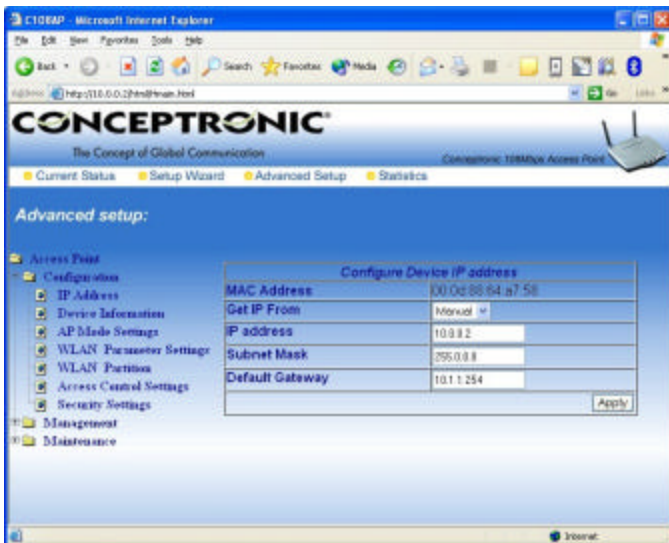
Click **OK**



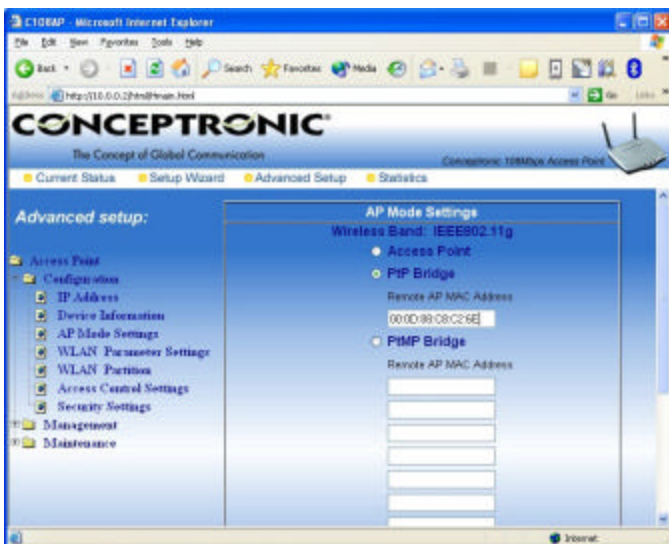
Click **Advanced Setup**



Click **Configuration**



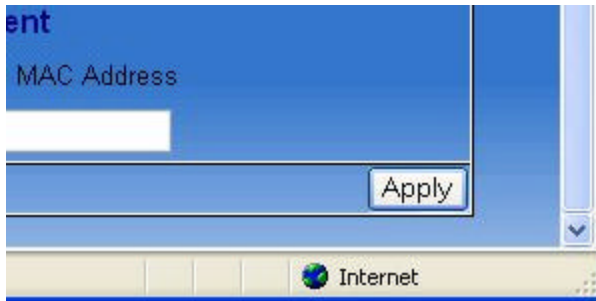
Click **AP Mode Settings**



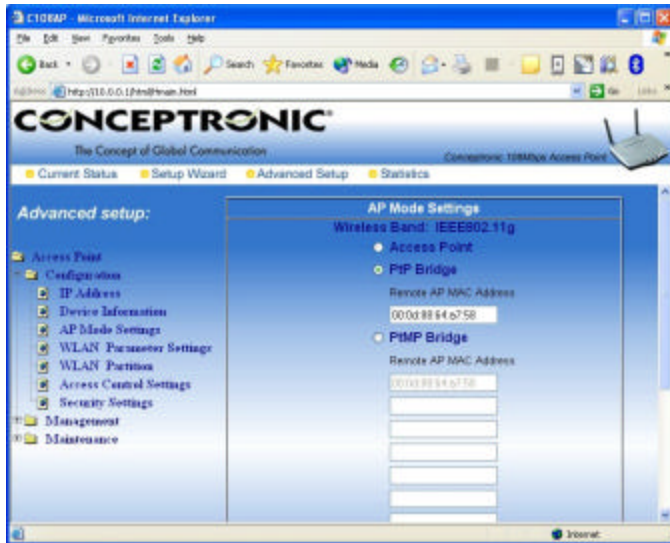
Click **PtP Bridge** and type the MAC Address of **Access Point A**

The MAC address can be found on the bottom of **Access Point A**:

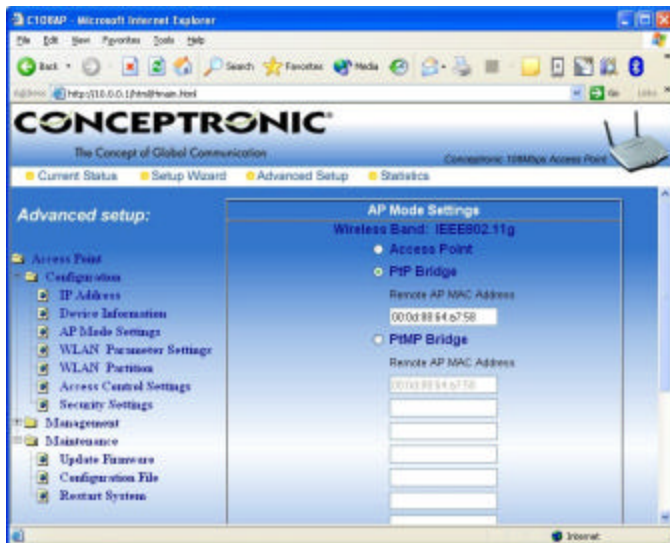




Scroll down and click **Apply**



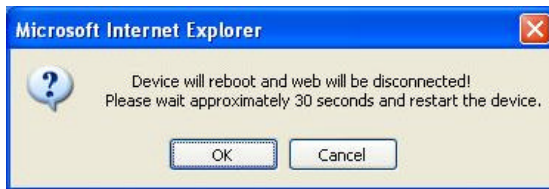
Click **Maintenance**



Click **Restart System**



Click **Restart**



Click **OK**

**Access Point B** is now configured correctly.  
Both Access Points can now function as Bridge  
so you can connect two networks together.