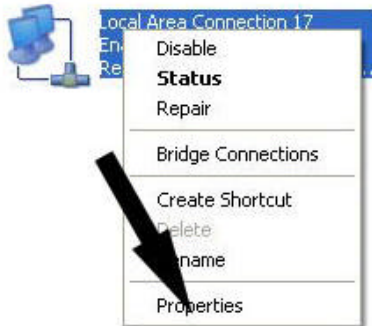


# How to setup WPA Security with the Conceptronic C54APT Access Point

Note:

The Access Point does not have to have the same TCP/IP settings as the rest of the network which it is connected to; it does pass on the data transparent. For configuring purposes you will have to have TCP/IP settings that match the TCP/IP settings of the Access Point

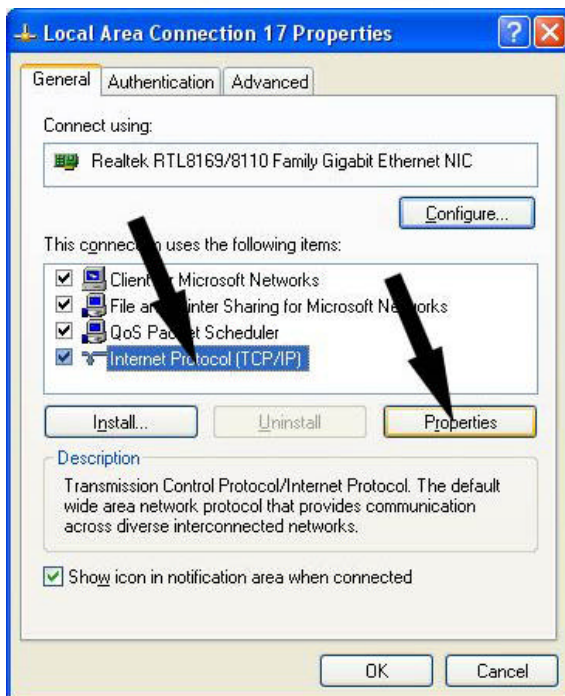
## 1. Change the settings of your network adapter to match the settings of the Access Point



Go to Start ..... Control Panel .....  
Network Connections

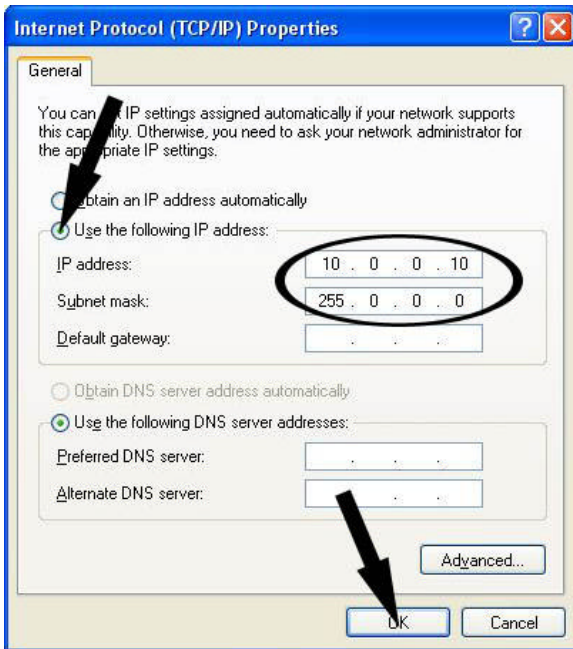
Right click on the Network  
connection

Go to **Properties**



Select **Internet Protocol TCP/IP**

Click **Properties**

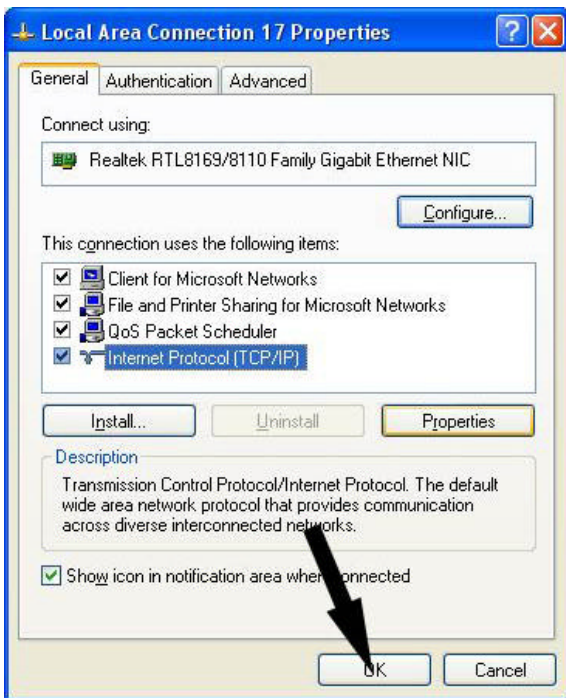


Select **Use the following IP address**

Type an address in the range **10.0.0.X**  
(like the example **10.0.0.10**)

Type the Subnet mask **255.0.0.0**

Click **OK**



Click **OK**

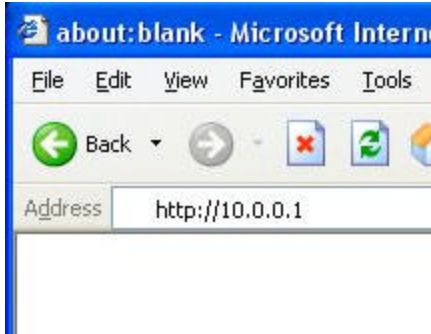
Your computer is now set to configure the Access Point.

## 2. How to setup WPA Security with the Conceptronic C54APT Access Point

Note:

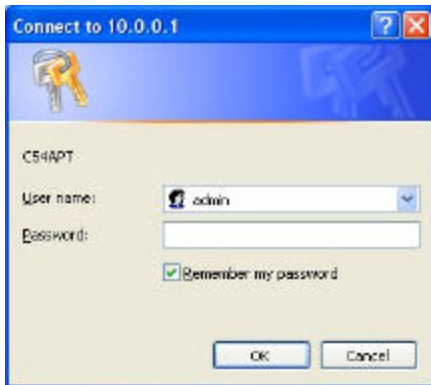
Before you are able to setup the C54APT with WPA we advice you to have the Access Point upgraded to firmware version **C54APT\_FW\_2\_C108AP.tfp** or more recent  
Please find the firmware file and upgrade instructions on [www.conceptronic.net](http://www.conceptronic.net)

### 2.1 Log-in to the Access Point



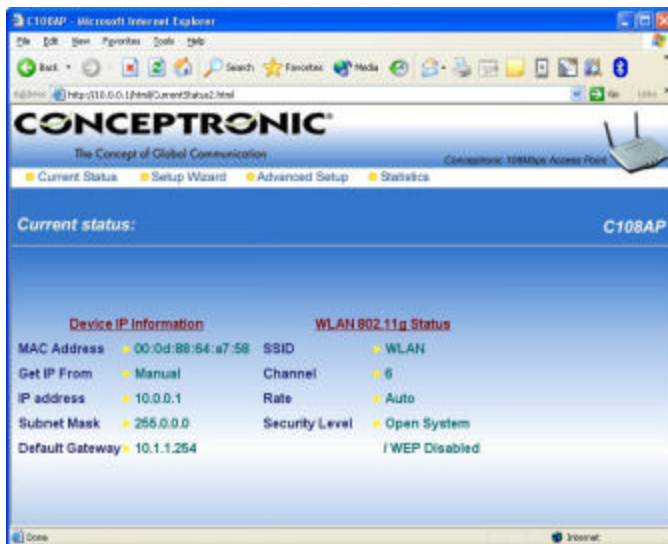
Open your browser

Type the address of the second Access Point  
(standard should be **10.0.0.1**)

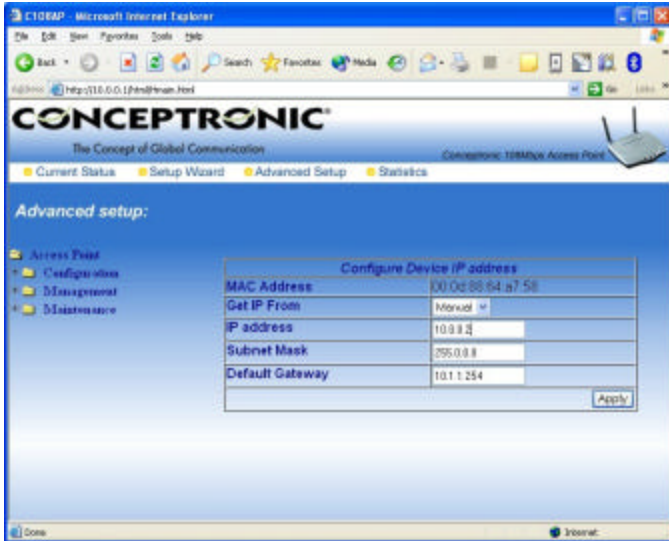


Type the User name and Password  
(Defaults are user: **admin** Password: empty)

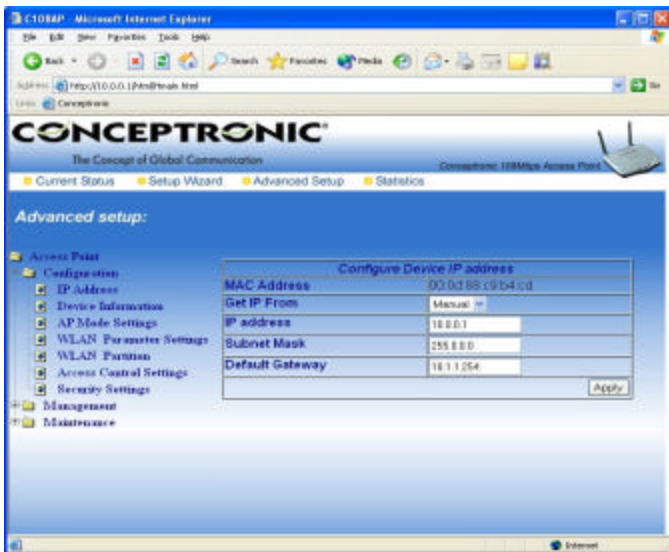
Click **OK**



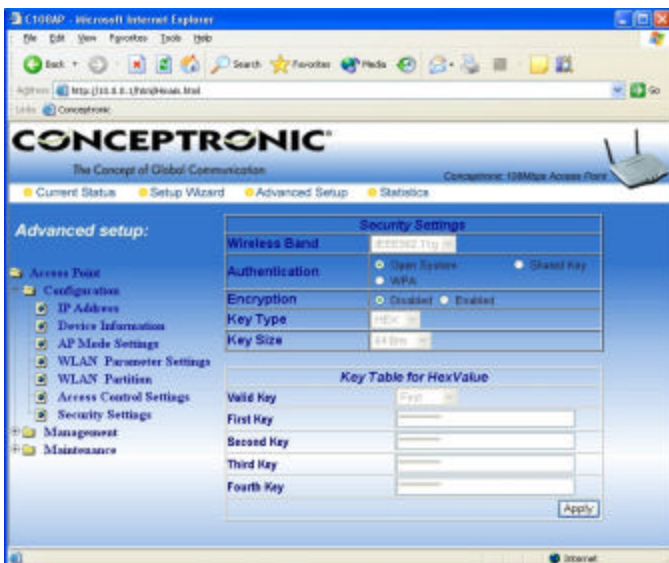
Click **Advanced Setup**



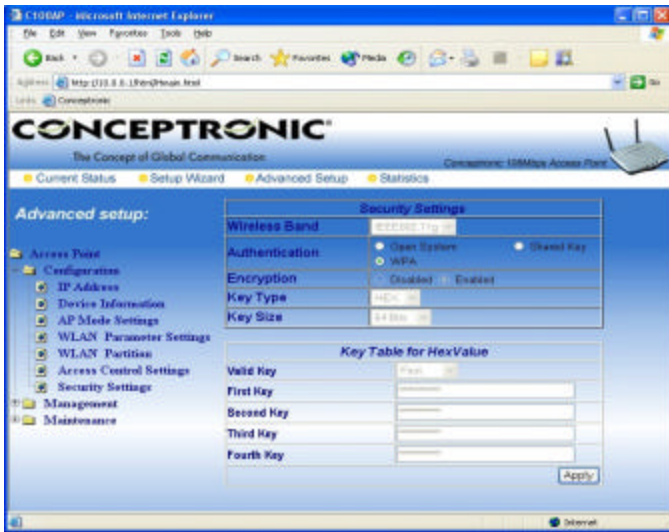
Click Configuration



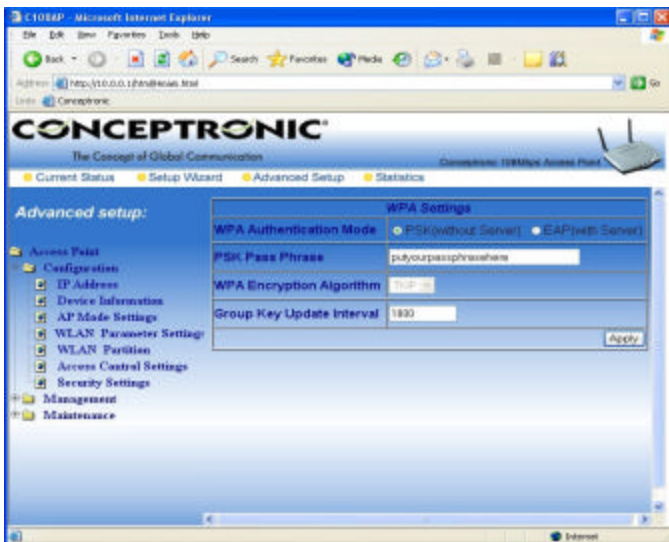
Click Security Settings



Click WPA



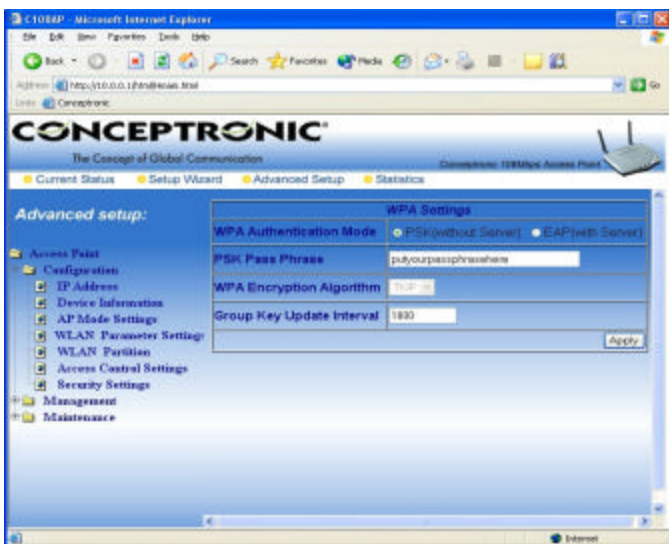
Click **Apply**



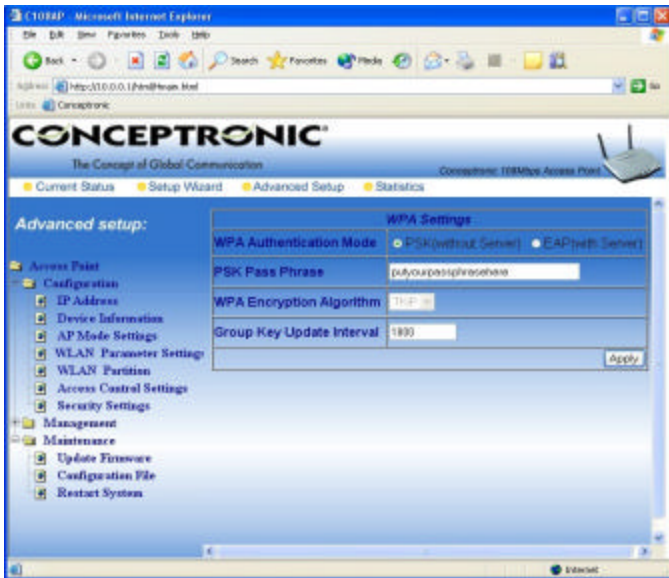
Make sure that **PSK** is selected

Type a password of minimal 8 characters in the text box.

Click **Apply**



Click **Maintenance**



Click **Restart System**



Click **Restart**



Click **Restart**

The **Access Point** is now configured with WPA Security.