

Setting security with the C54BRS4 and the C54RU/RC/Ri

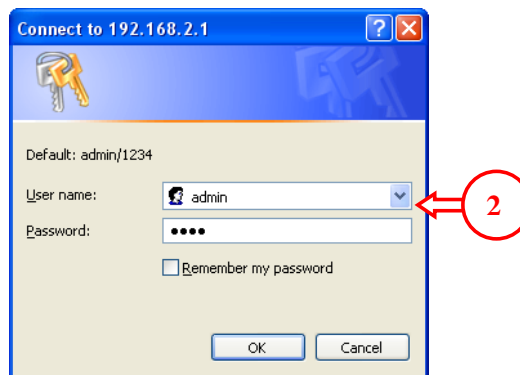
This manual will help you to set security on the C54BRS4 and the C54RU/RC/Ri. With security, your wireless connection will not be available for other people who do not know about the security settings.

GENERAL NOTE: *When changing settings on the C54BRS4, make sure you are connected with the supplied Ethernet cable instead of the wireless connection!!*

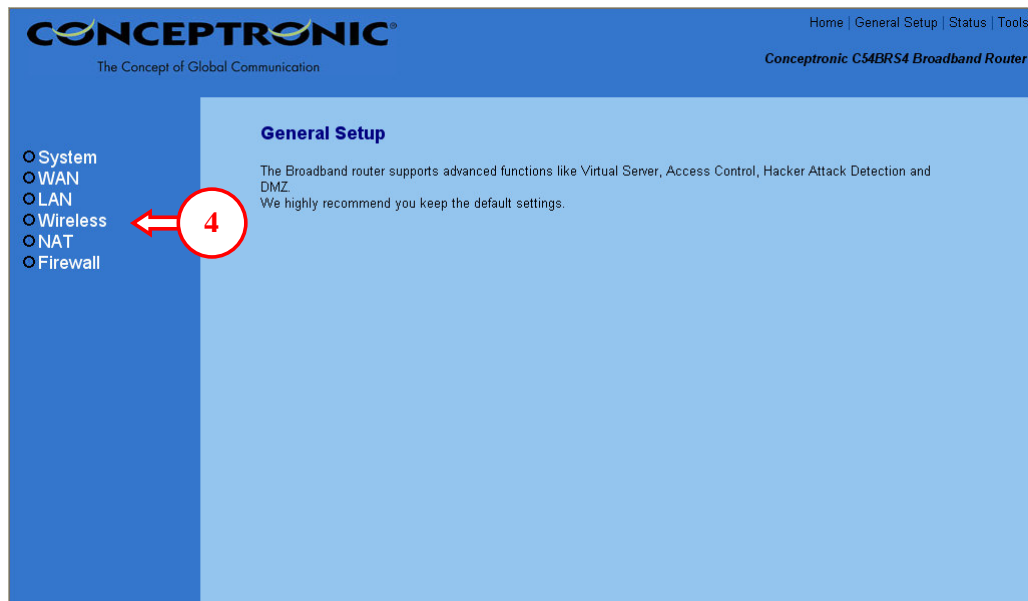
Setting WEP Security on the C54BRS4.

WEP Security can be used with all supported operating systems. To enable WEP Security, follow the next steps:

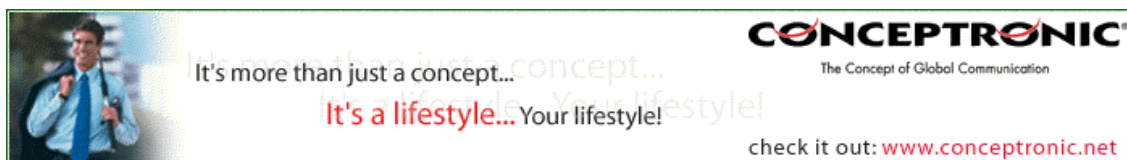
1. Open Internet Explorer, and type in the address bar the IP address of the router (Default: [HTTP://192.168.2.1/](http://192.168.2.1/))

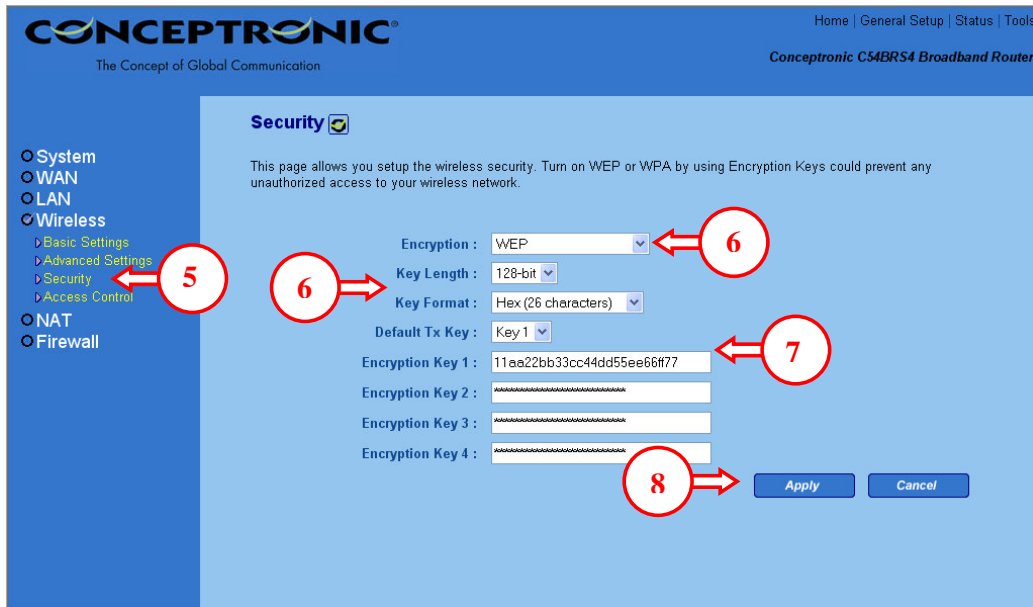


2. Enter the Username and Password for the router (Default: **admin** / **1234**)
3. Choose in the main menu for "**General Setup**"



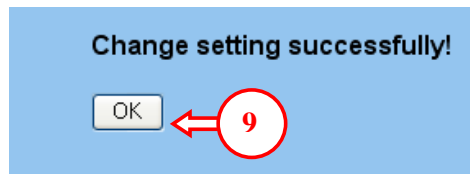
4. Select the "**Wireless**" option at the left of the screen.





5. Select the option “**Security**”, which is part of the Wireless section.
6. Set the encryption type to “**WEP**” and the Key Length to “**128-Bit**”
7. Set the Default Tx Key to “**Key 1**” and enter an encryption key in the field “**Encryption Key 1**”. This key must be 26 characters and can contain the numbers 0 to 9 and the letters A to F. Remember this key! You will need it to configure the wireless card for connection!
8. Press “**Apply**”.

The router will change the security settings and will give the following message when complete:



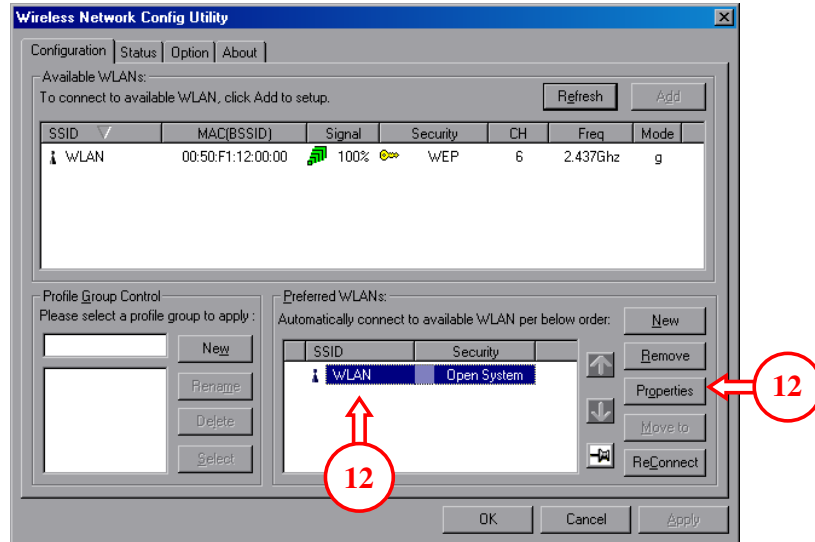
9. Press “**OK**”. The router saved the settings. You can close your Internet Browser.

The next steps will configure the C54RU/RC/Ri for the WEP encryption:

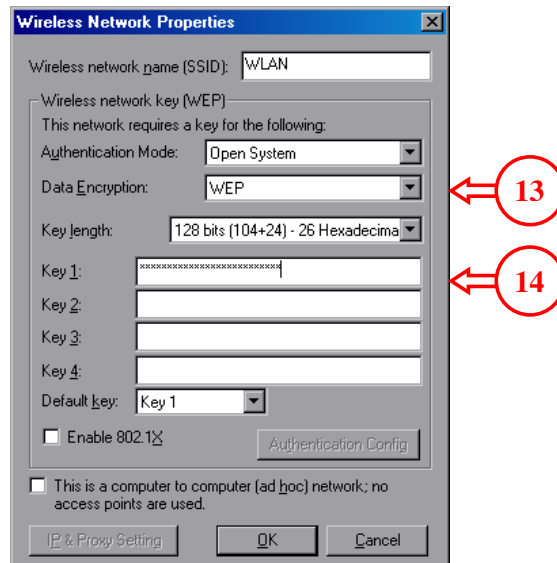
10. Connect your Wireless device to the computer.



11. Double-click on the Conceptronic Utility in the taskbar. The Conceptronic Utility will come up. You will see that the WLAN network is secured with WEP Security.



12. In the “**preferred WLAN's**” section, select “**WLAN**” and press “**Properties**”.



13. At the Properties Page, set the Authentication Mode to “**Open System**”, the Data Encryption to “**WEP**” and the Key length to “**128 Bits (104+24) – 26 Hexadecimal**”.

14. Enter the key from step 7 in the field of Key 1 and press “**OK**”.

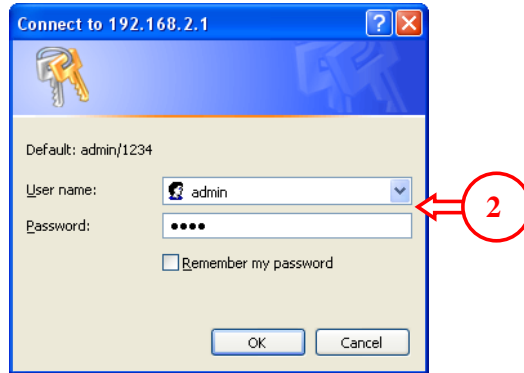
The wireless connection is now available with WEP security.

Setting WPA Security (Only for Windows 2000 and Windows XP)

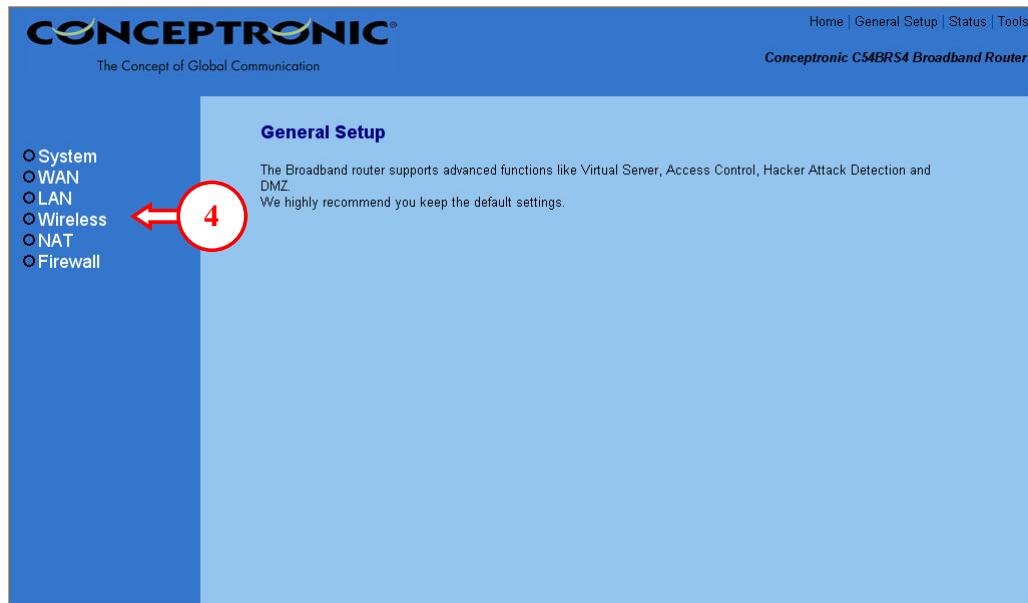
WPA Security can only be used with Windows 2000 and Windows XP. WPA is more secure, and simpler to install than WEP security.

To enable WPA Security, follow the next steps:

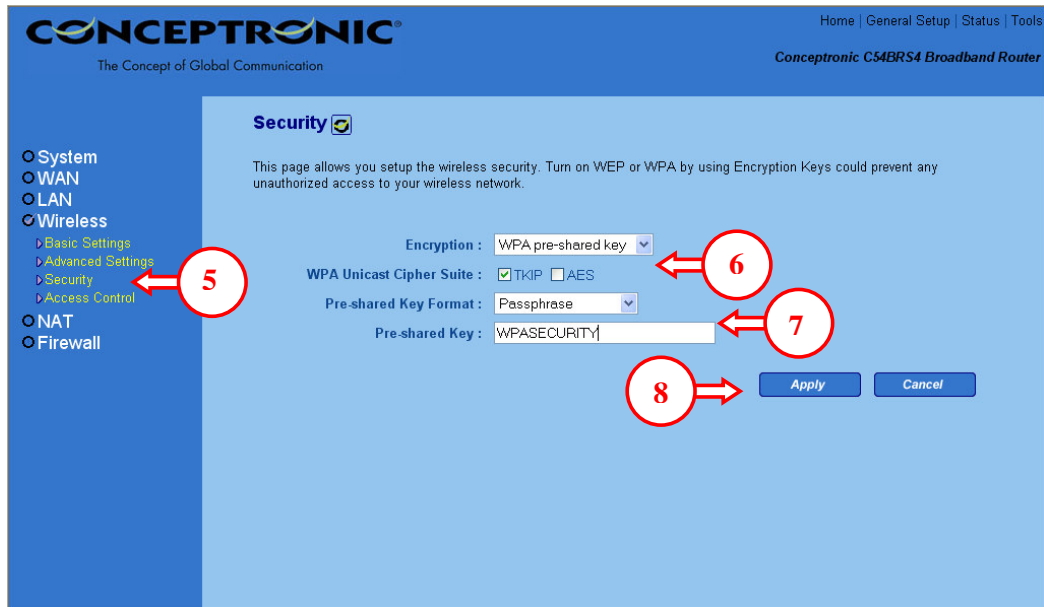
1. Open Internet Explorer, and type in the address bar the IP address of the router (Default: **HTTP://192.168.2.1/**)



2. Enter the Username and Password for the router (Default: **admin / 1234**)
3. Choose in the main menu for **“General Setup”**

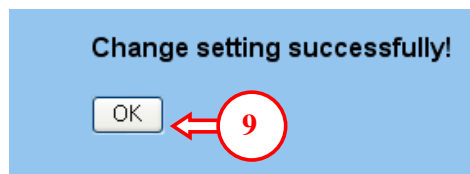


4. Select the **“Wireless”** option at the left of the screen.



5. Select the option “**Security**”, which is part of the Wireless section.
6. Set the encryption type to “**WPA**” and select “**TKIP**” at the WPA Unicast Cipher Suite.
7. Set the Pre-shared Key Format to “**Passphrase**” and enter a pass phrase in the field “**Pre-shared Key**”. The pass phrase needs to be 8 characters minimum!
Remember this key! You will need it to configure the wireless card for connection!
8. Press “**Apply**”.

The router will change the security settings and will give the following message when complete:



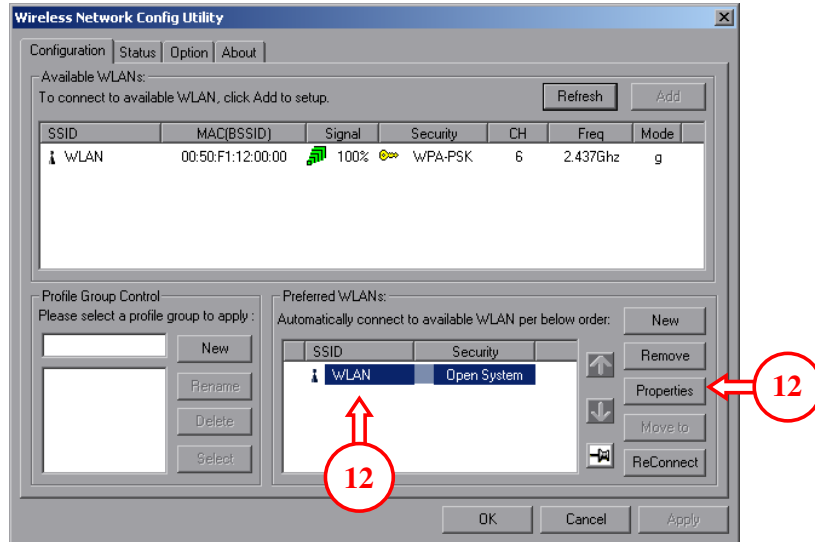
9. Press “**OK**”. The router saved the settings. You can close your Internet Browser.

The next steps will configure the C54RU for the WPA encryption:

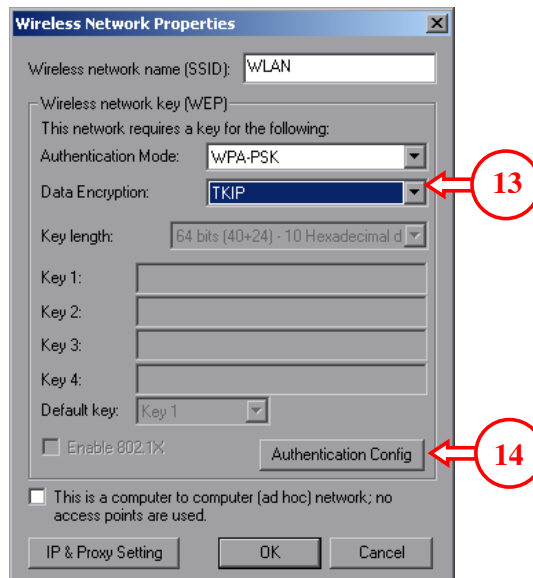
10. Connect your Wireless device to the computer.



11. Double-click on the Conceptronic Utility in the taskbar. The Conceptronic Utility will come up. You will see that the WLAN network is secured with WPA Security.

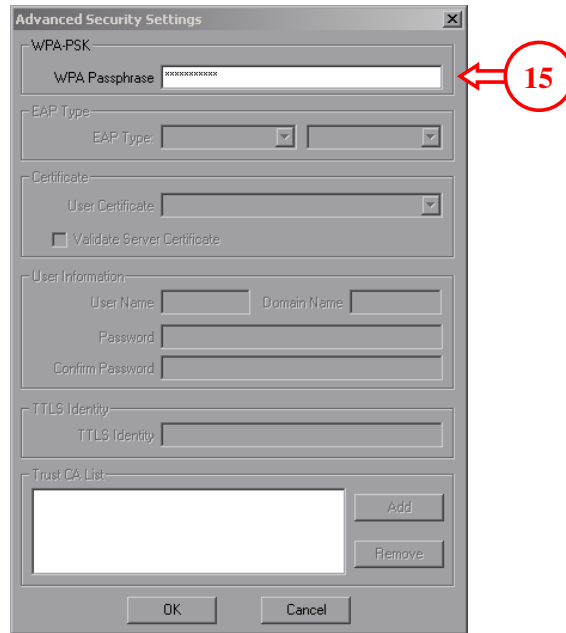


12. In the “**preferred WLAN's**” section, select the WLAN and press “**Properties**”.



13. At the Properties Page, set the Authentication Mode to “**WPA-PSK**” and the Data Encryption to “**TKIP**”.

14. Press “**Authentication Config**”.



15. Enter the WPA string from step 5 in the field for WPA Pass phrase and press "OK".
16. At the Properties Page, press "OK".

The wireless connection is now available with WPA Security.