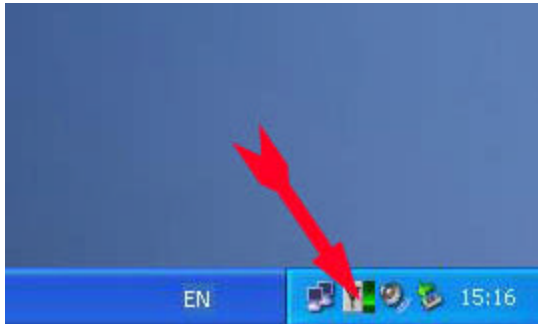


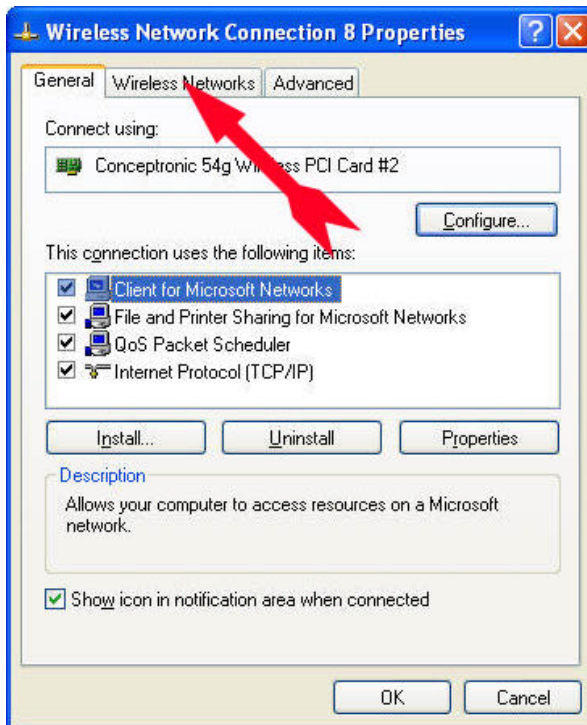
How to setup WPA Security with a Conceptronic C54i/C54C wireless card

Note:

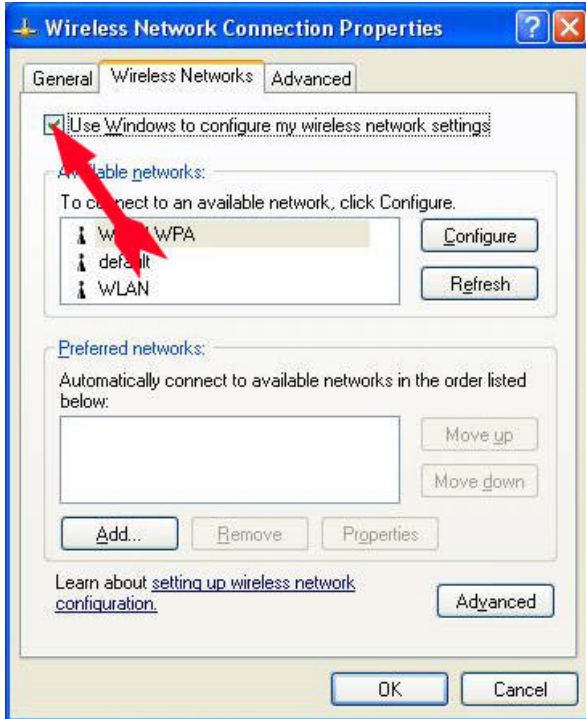
This manual is only for configuring the WPA secure connection after you have installed the drivers and utility software for the Conceptronic C54i/C54C. If you have not already done so, please refer to the manual of the card for installation instructions.



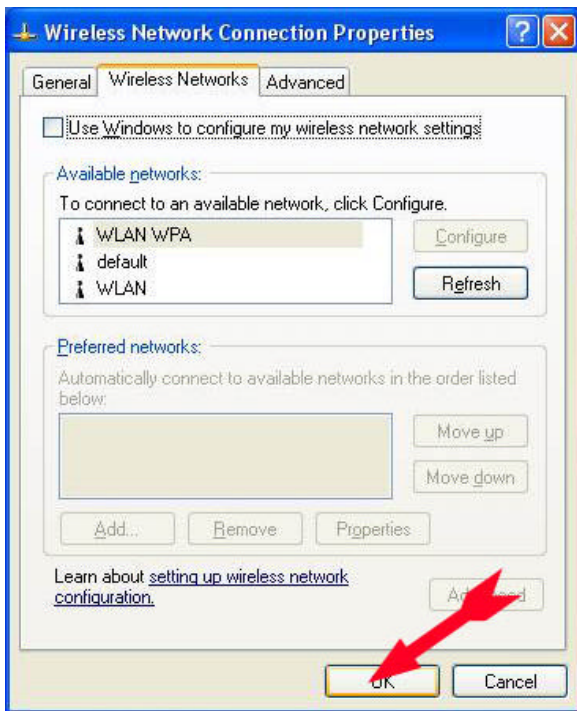
Double click on the utility icon in the system tray.



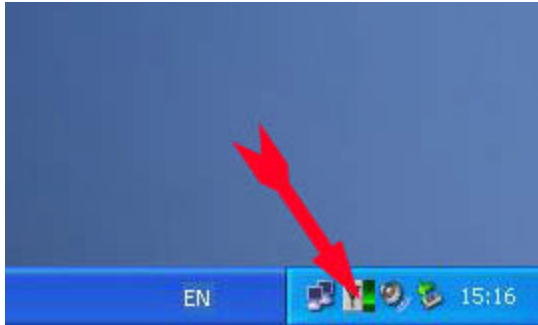
Click on **Wireless Networks**



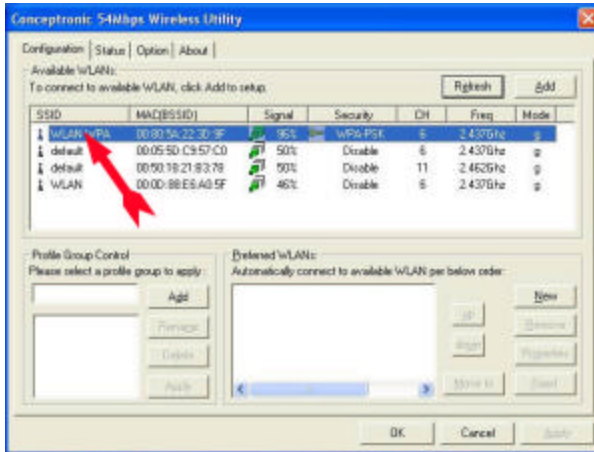
Uncheck check box for **Use Windows to configure my wireless network settings**.



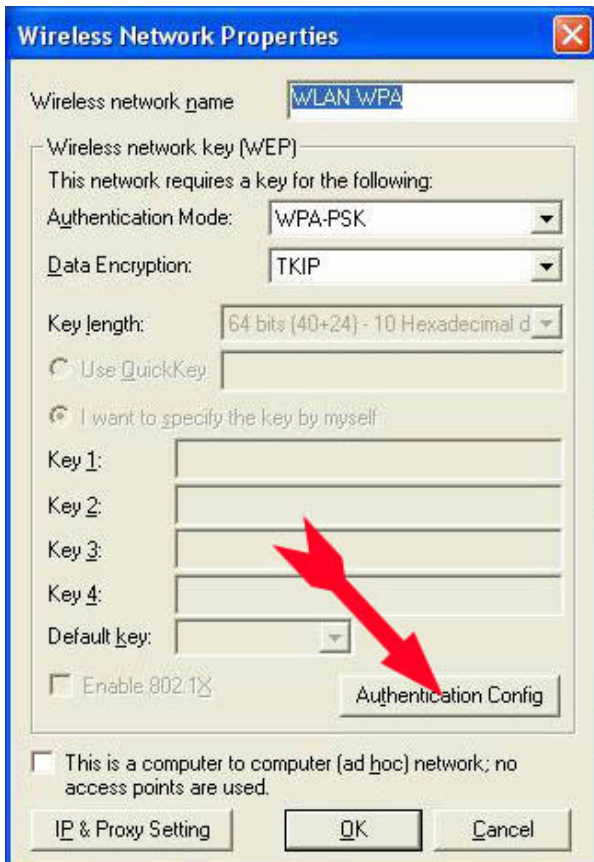
Click **OK**



Double click on the utility icon in the system tray again, The utility will now start.



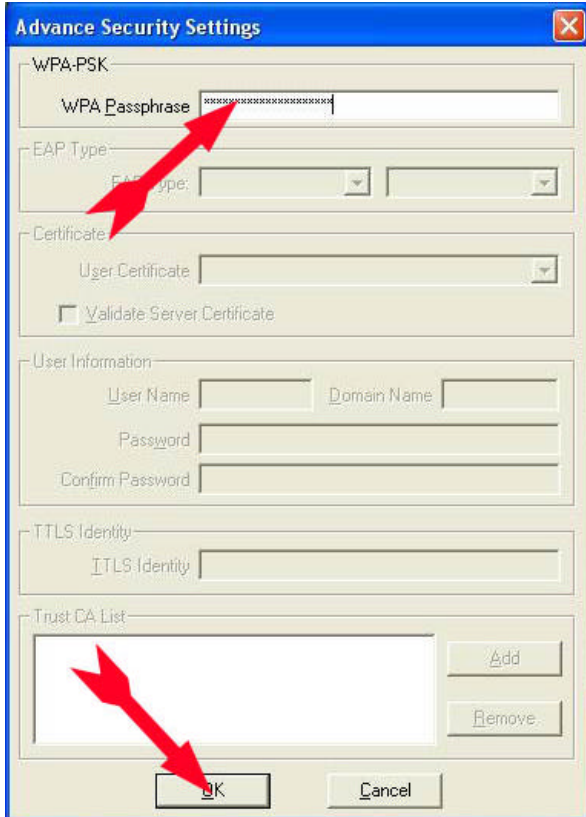
Double Click on the preferred WPA Protected Wireless



Put a name for the connection

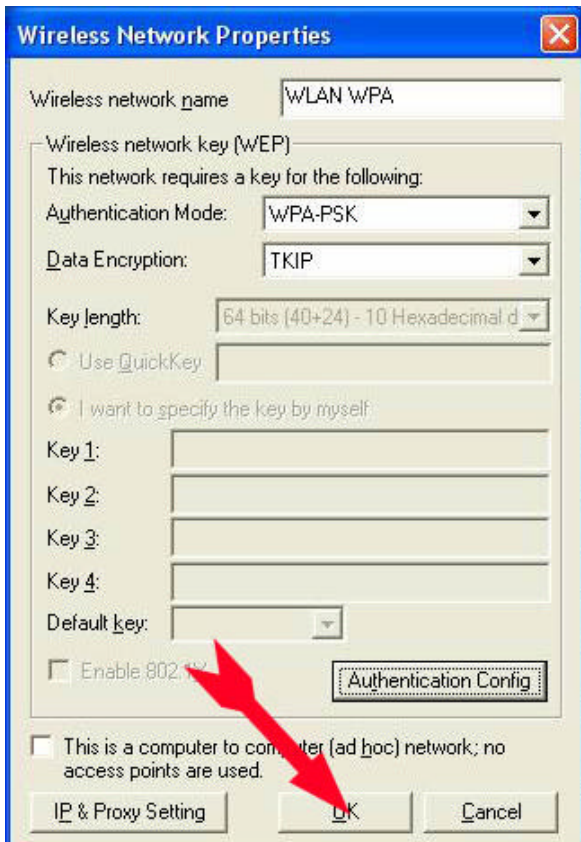
Select **WPA-PSK** and **TKIP**

And click on **Authentication config**

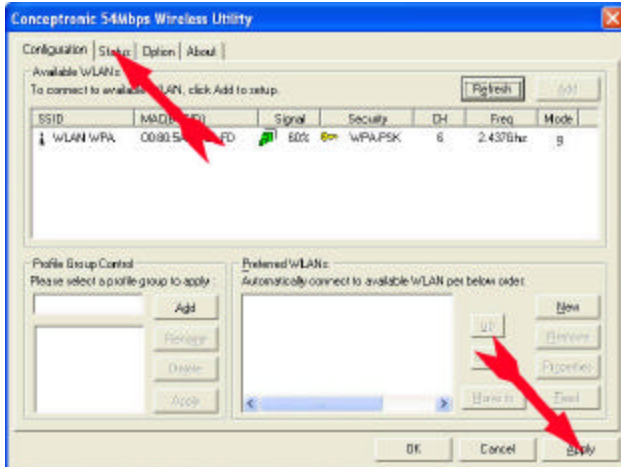


Put the **Passphrase** exactly
As you have in the Access Point

Click **OK**

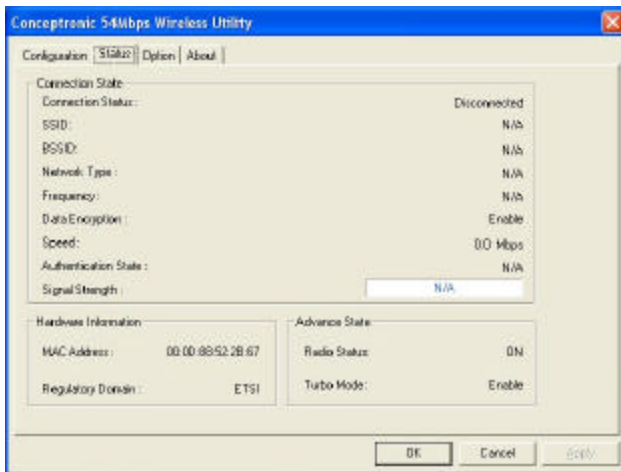


Click **OK**

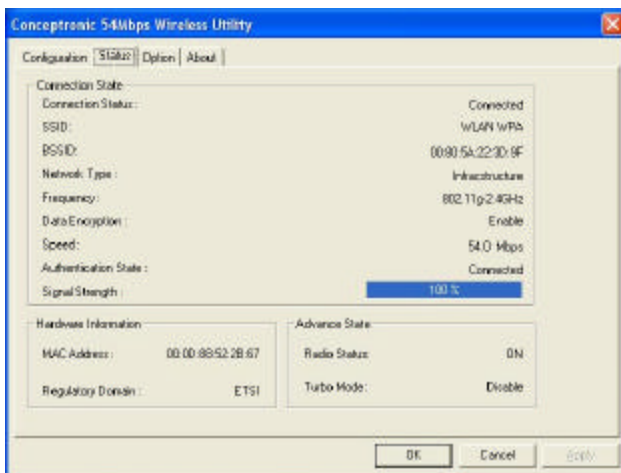


Click **Apply**

And click on **Status**



First you will see that
There is no connection



And after a few seconds
You will see **Connected**

You now have a secure WPA connection with your Access Point.