

## Setup 108 Mbps Turbo Super G mode C54i and C54G

### Nederlands:

Wees er zeker van dat de Conceptronic C54C of C54i kaart goed functioneert en dat uw Access Point correct is ingesteld voor Super G mode. (Raadpleeg hiervoor de handleiding van uw Access Point).

- 108 Mbps Turbo Super G mode kan alleen functioneren indien de kaarten en Access Point gebruik maken van dezelfde chipset. (Atheros).
- We adviseren om gebruikt te maken van de Conceptronic C54APT Access Point om de snelheid van 108 Mbps te halen.
- 108 Mbps Turbo Super G mode kan alleen werken in 'Infrastructure' mode. (met Access Point).
- In 'Adhoc' mode kunnen de kaarten met elkaar verbinden op 802.11b snelheid (beperking WiFi).

### English:

Be sure that your Conceptronic C54C or C54i Card and that your Access Point is working and configured properly for Super G mode. (Use the manual of your Access Point).

- 108 Mbps Turbo Super G mode can only work when the wireless card(s) and Access Point are using the same chipset (Atheros).
- We strongly advise to use the Conceptronic C54APT for getting the 108 Mbps speed.
- 108 Mbps Turbo Super G mode will only function in 'Infrastructure' mode. (with Access Point).
- In Adhoc Mode the cards will connect at 802.11b speed (restriction WiFi).

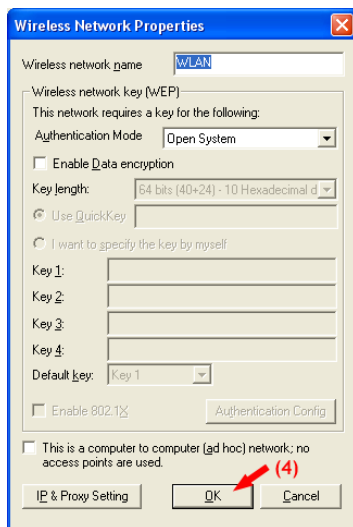
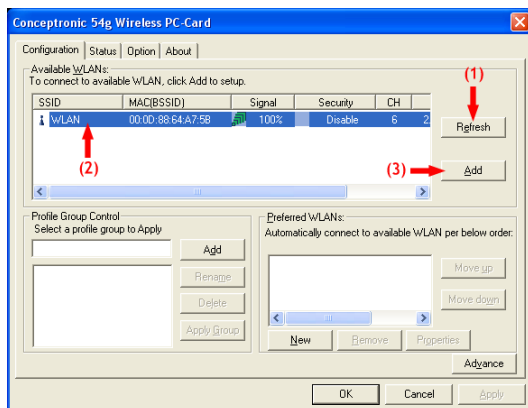


### NEDERLANDS

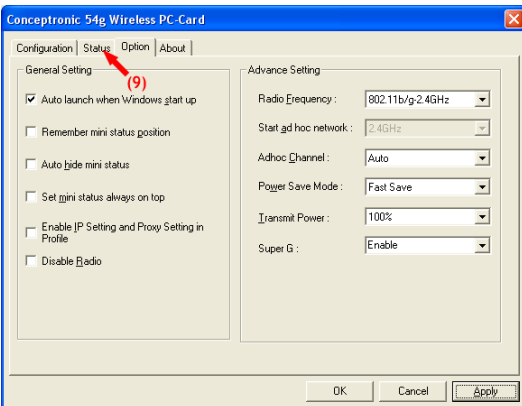
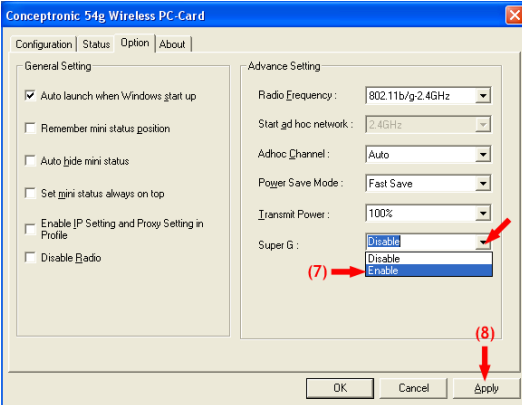
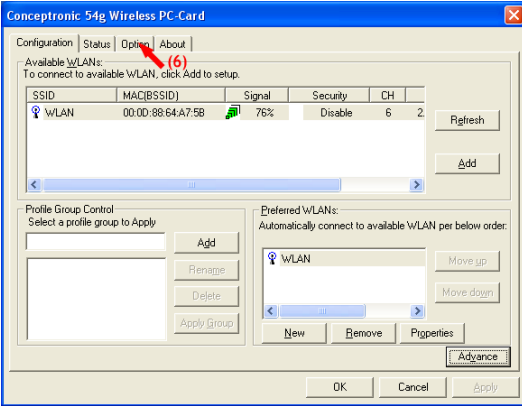
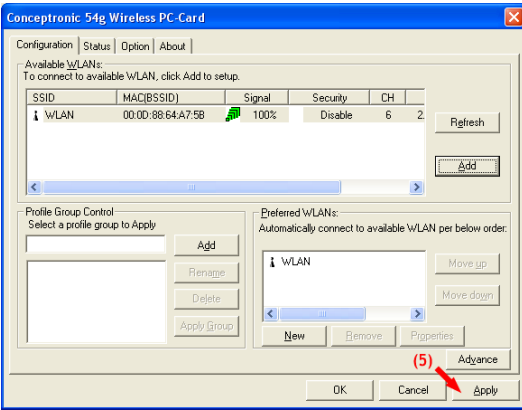
Dubbelklik op het Wireless LAN utility icoon in de taakbalk.

### ENGLISH

Double click on the Wireless LAN Utility icon in the system tray.



# Setup 108 Mbps Turbo Super G mode C54i and C54G



## Setup 108 Mbps Turbo Super G mode C54i and C54G

