

Schedule recording with C54NETCAM2/CNETCAM2



C54NETCAM2



CNETCAM2

To schedule a weekly or daily recording you must set it through option **Schedule-Recording Configuration**.

The screenshot shows the Conceptronic Ultraview web interface. On the left is a control panel with sections for CONTROLS (SETTING, PLAY, LOCK, ALL RECO RD), VIEW SELECTION (1, 4, 9, 16, FULL, SCAN, PREV, NEXT), CAMERA (TRIGGER OUT, SNAPSHOT, RECORD, TALK, LISTEN), SYSTEM (TIME: 25/03/2009 12:42:47), and PAN-TILT CONTROL. The main area has a menu on the left with 'Schedule-Recording Configuration' highlighted in red. The right side shows the configuration for 'Camera1 192.168.1.111 C54NETCAM2', with tabs for 'Dates' and 'Days'. Below the tabs is a table for scheduling:

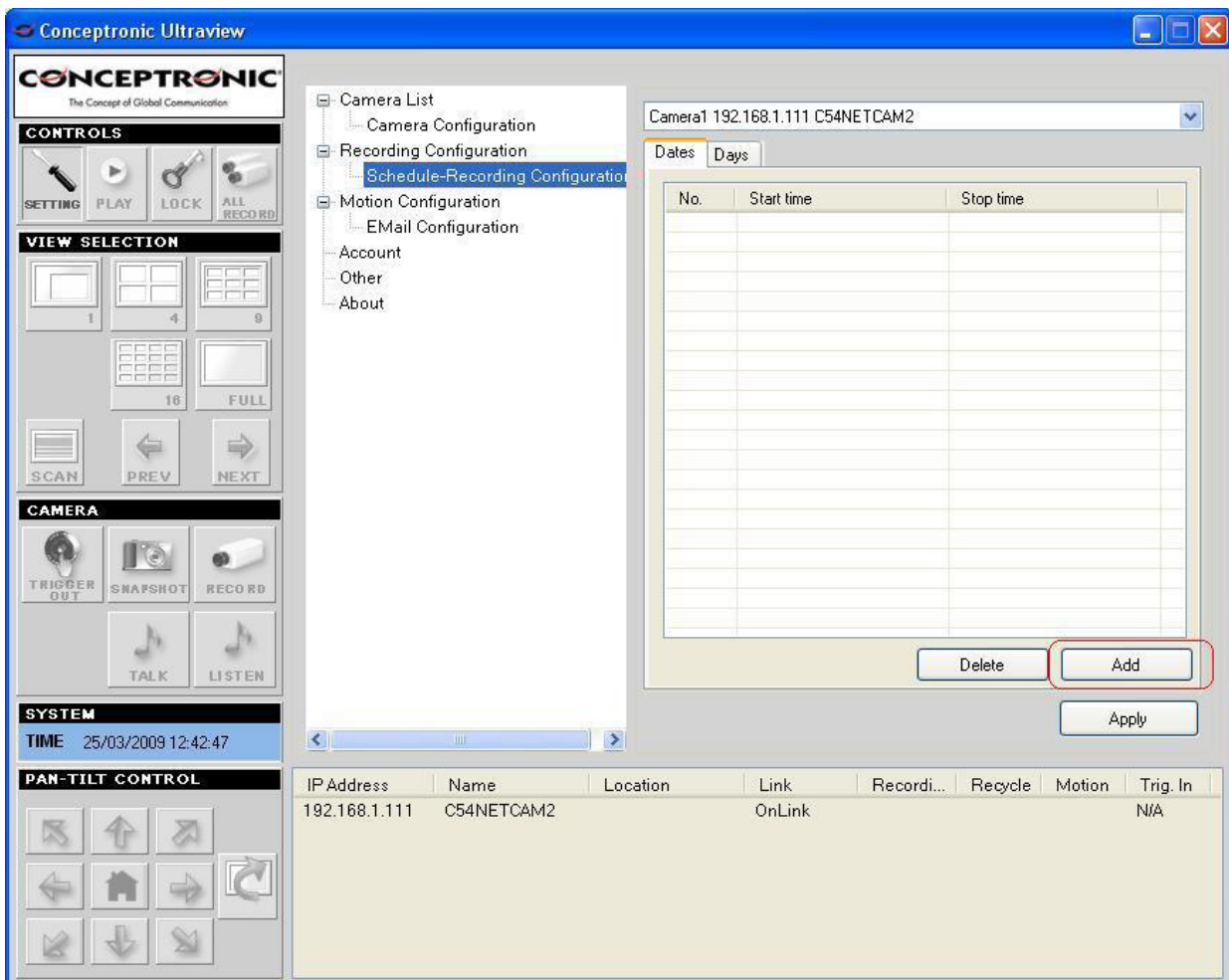
No.	Start time	Stop time

Buttons for 'Delete', 'Add', and 'Apply' are at the bottom of the table. At the bottom of the interface is a camera list table:

IP Address	Name	Location	Link	Recordi...	Recycle	Motion	Trig. In
192.168.1.111	C54NETCAM2		OnLink				N/A

There are two ways to enter recording schedule, by Date or by Days.

First mode can be configured by clicking Add button in Dates tab.



You can select days for recording, start and end. This option is ideal for specific recordings. Click **OK** and **Apply**.



To do regular recordings, such as every day of the week, you should use **Days** option. In this tab appears every day of the week and their hours. In this example we set a record for any week from 9:00 to 18:00 hours. Remember that you must select day by day and mark the end time and start time for a weekly recording. Finally click **Apply**.

The screenshot shows the 'Recording Configuration' window for 'Camera1 192.168.1.111 C54NETCAM2'. The 'Days' tab is active, displaying a grid of time slots for each day of the week. The recording schedule is configured for Monday through Friday from 09:00 to 18:00. The interface includes various control panels on the left and a table at the bottom.

IP Address	Name	Location	Link	Recordi...	Recycle	Motion	Trig. In
192.168.1.111	C54NETCAM2		OnLink				N/A