

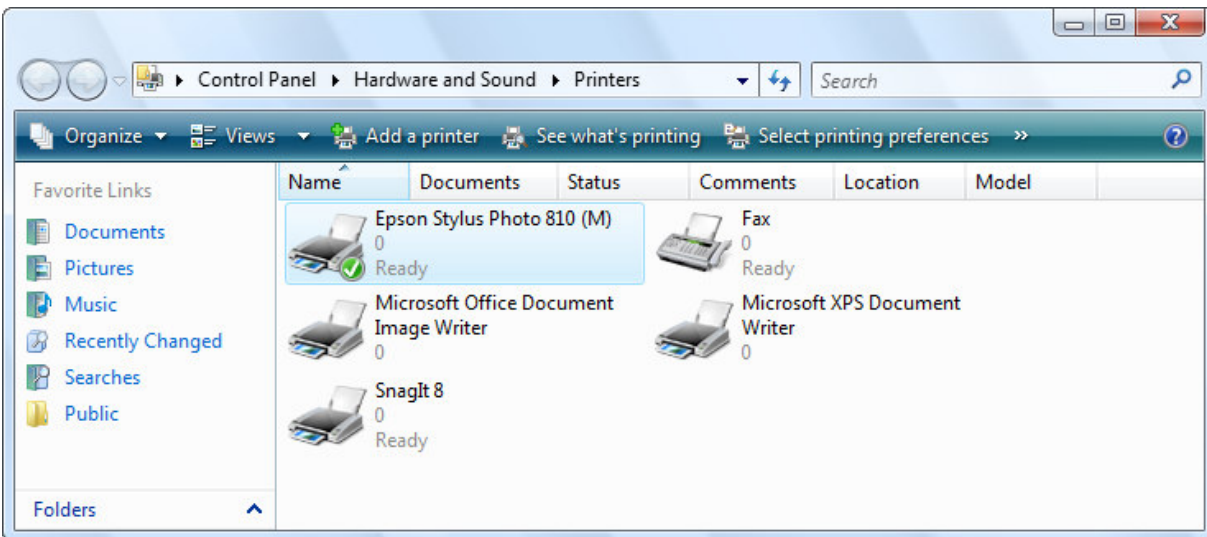
How to install the C54PSERVU within Windows Vista

This document describes how to install your printer using the Conceptronic C54PSERVU print server within Windows Vista.

1. Installing the printer

Before you can print using the C54PSERVU you will need to install your printer as local printer. This means you will have to connect it to your computer and install the correct Windows Vista drivers for your printer.

When correctly installed, your printer should be mentioned as default printer in Windows Vista. Check this by going to “Start” » “Control Panel” » “Printers”. In our example, we installed an Epson Stylus Photo 810, as can be seen in the screenshot below. The green check icon represents the default printer.



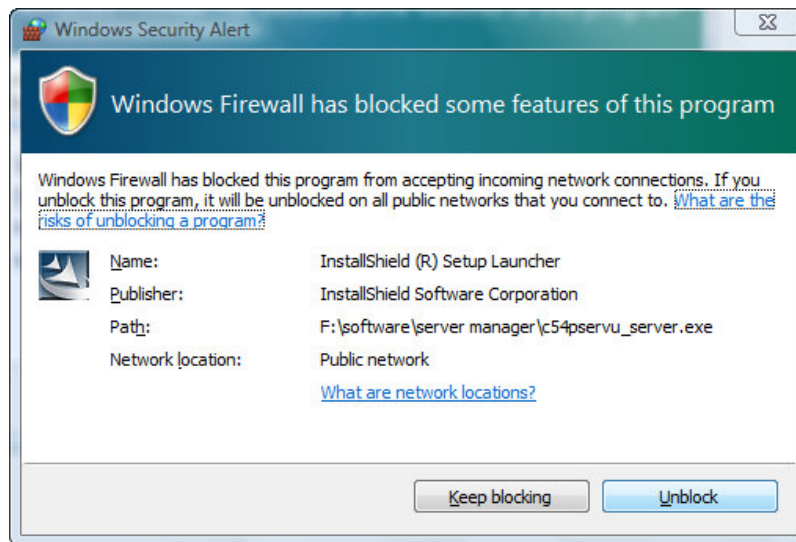
An Epson Stylus Photo 810 installed as default local printer

When the printer is installed correctly as local printer, you can disconnect it from your computer and connect it to the C54PSERVU in the network. Make sure you turn the printer on, otherwise the C54PSERVU cannot recognize it.

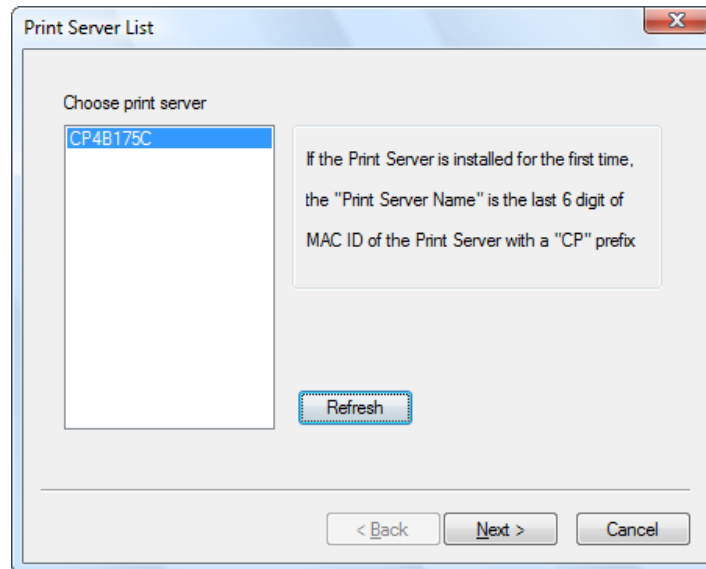
2. Installing the C54PSERVU software

Use the included CD-ROM or download the latest software from www.conceptronic.net. Start the auto run menu by clicking on “Autorun.exe” and choose the option “Install Print Server Manager”. Follow the onscreen instructions to install the software.

During installation it is possible you will get a Windows Security Alert as can be seen in the screenshot below. You will need to accept this by clicking the “Unblock” button.



You will now get the “Print Server List” in which the C54PSERVU should be listed. If it is not listed, you will need to click the “Refresh” button in order to search for available print servers. If it is listed, you can click the “Next” button to continue the installation.



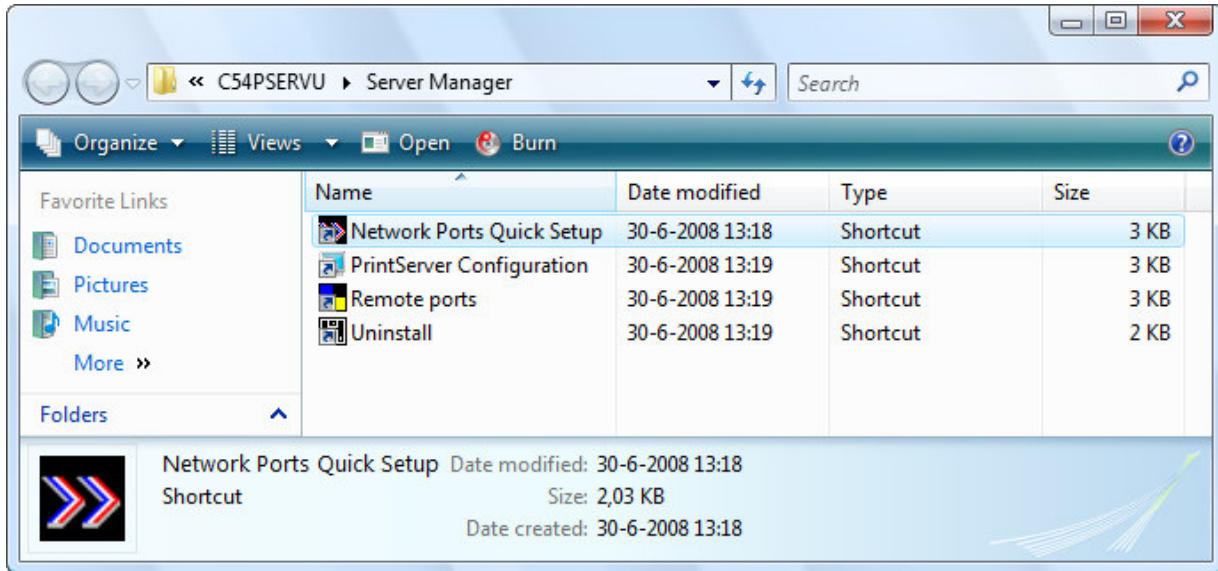
In the next window you can change the name of the print server for your convenience. This is not mandatory, but choosing a name that is easy to remember might help you to recognize the device as yours. In our example we chose to name it “EPSON810”. Click the “Next” button to continue.

Now you can change the IP address settings for the C54PSERVU. If you don’t know what this setting is for you can leave it set to “Don’t change”. Otherwise you can set an IP address manually. Click the “Next” button to continue.

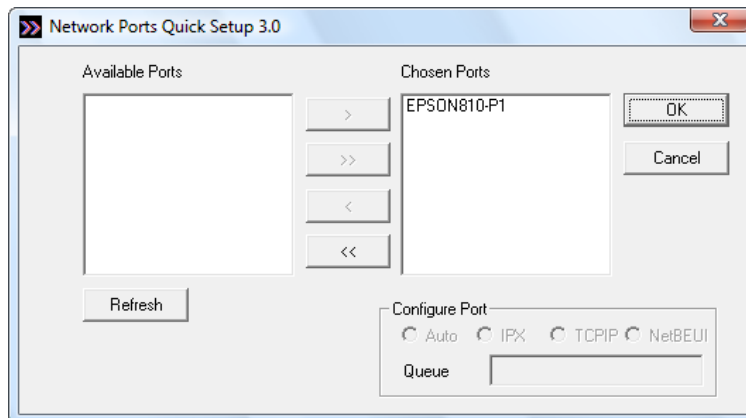
The last window is a summary of all settings. Click the “Finish” button to complete the initial setup. You will get an “InstallShield Wizard Complete” window that tells you the installation has completed. Click the “Finish” button to close the window.

3. Configuring the C54PSERVU

After clicking the “Finish” button in the last step you will get a window containing multiple shortcuts. Double click the “Network Ports Quick Setup” icon to assign a port to the print server.



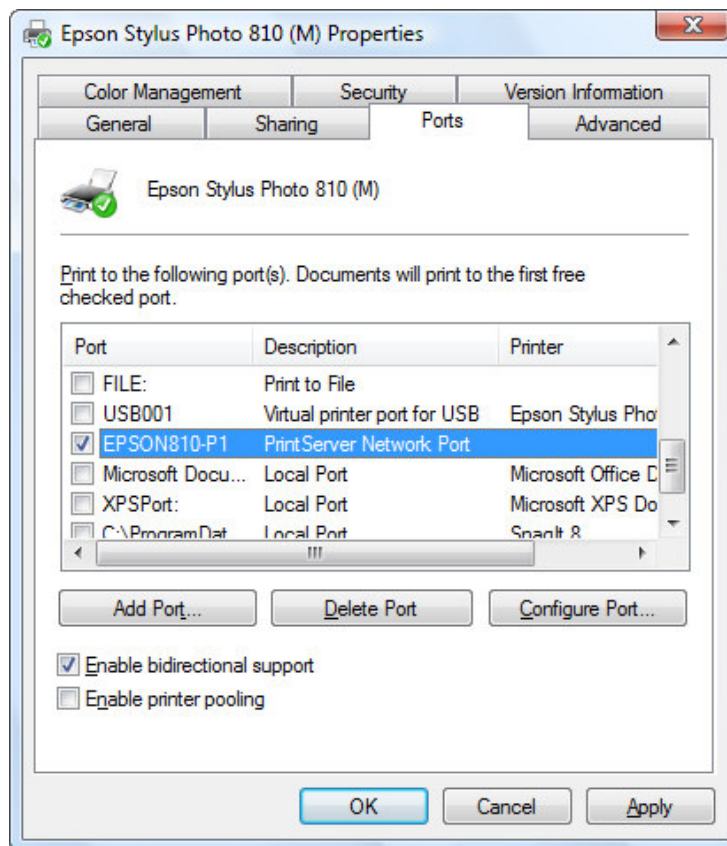
In the “Network Ports Quick Setup” window you will need to make sure the print server port is mentioned under “Chosen Ports”. It could be that it is listed there by default, otherwise select it in the left column and press the “>” button. When your print server port is not mentioned at all, you will need to click the “Refresh” button. The “Configure Port” option can be left to “Auto”. When done, press the “OK” button.



4. Setting the port

Once the software installation and configuration is complete, you will need to set the port manually within Windows Vista's printer settings.

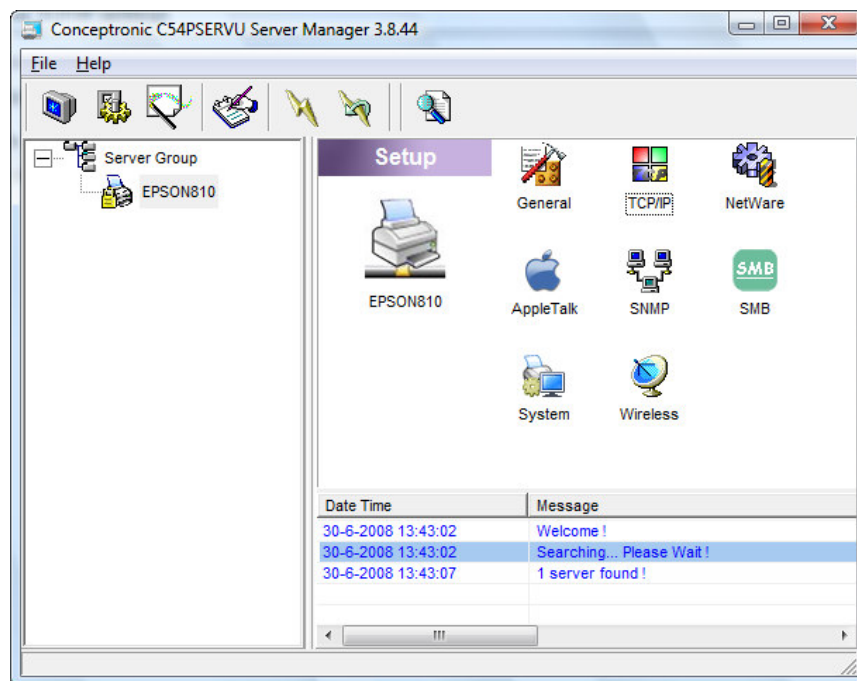
Go to "Start" » "Control Panel" » "Printers", right click your printer and select "Properties". In the "Properties" window select the "Ports" tab. Look for a port that is called "<PRINTSERVER>-P1" (in our example this is "EPSON810-P1"), tick the checkbox in front of it and click the "OK" button.



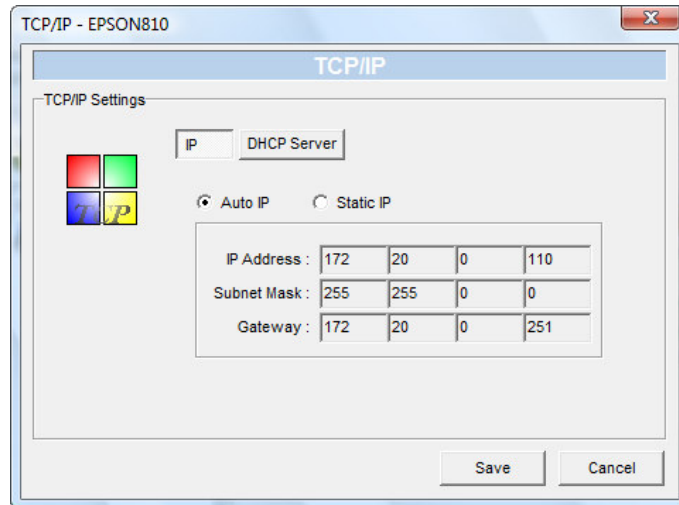
5. Setting the TCP/IP settings

You will now need to set the print server to get an IP address automatically. Go to “Start” » “All programs” » “Conceptronic” » “C54PSERVU” » “Server Manager” and click on “PrintServer Configuration”.

The Server Manager will be opened and your print server will be mentioned in the left column. Select it and click the second button in the button bar (“Setup”). Now double click the “TCP/IP” button on the right. You will get a login screen in which you will need to enter the configuration password, by default this is “1234”.



In the “TCP/IP” window you will need to select “Auto IP”. When done press the “Save” button.



The settings will be saved, but the print server needs to be rebooted. Select your print server in the left column and press the “Reboot” button in the button bar (sixth from left).

6. Setting the printer “online”

The last thing that you will need to do is setting the printer to online status. Go to “Start” » “Control Panel” » “Printers”, right click your printer and select “Use Printer Online”.

Your Conceptoronic C54PSERVU and printer are now set up and ready to be used within Windows Vista.