

How to Forward a Port with the CADSLR4(B)

Note!

When you want to forward a certain port to be redirected (forwarded) to a certain computer in the LAN network you first have to configure that computer with fixed TCP/IP settings so you will have one IP to forward the port to that will not change.

Example:

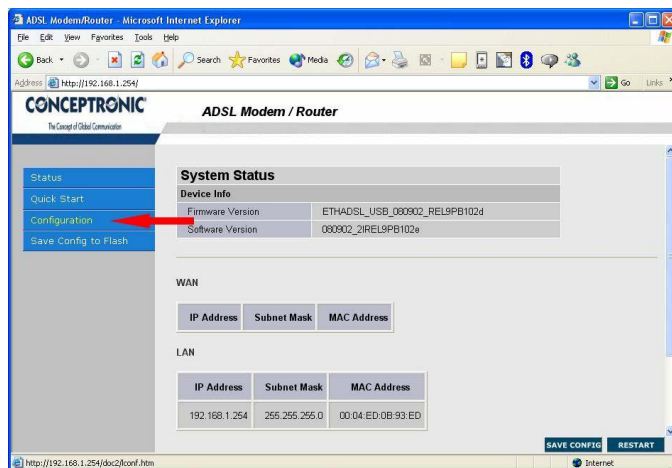
IP : 192.168.1.200
Subnet mask : 255.255.255.0
Gateway : 192.168.1.254
DNS : 192.168.1.254



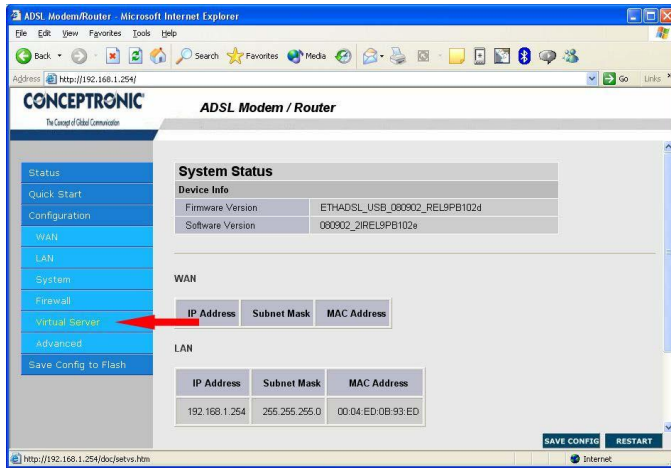
Login to the CADSLR4(B) by typing the address in your browser.



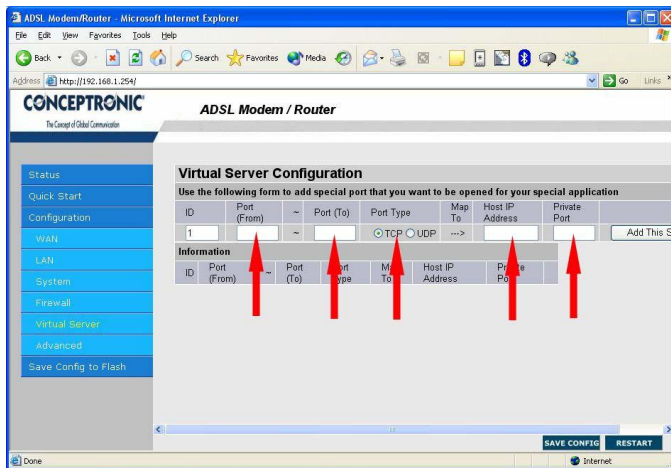
Enter the Username and password
Standard is:
Username: admin
Password : password



Go to Configuration

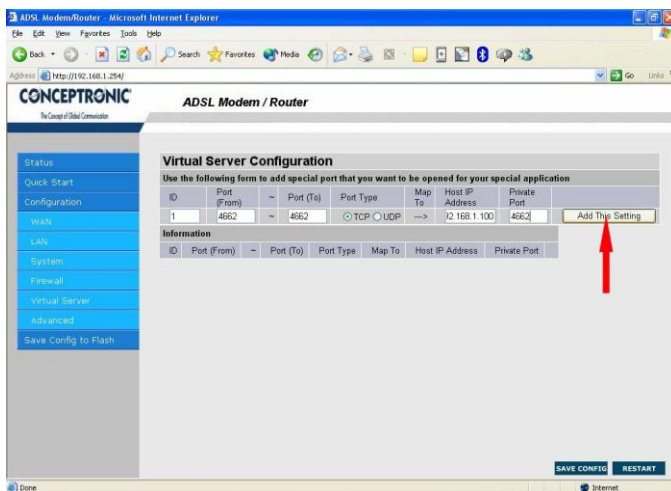


Go to **Virtual Server**

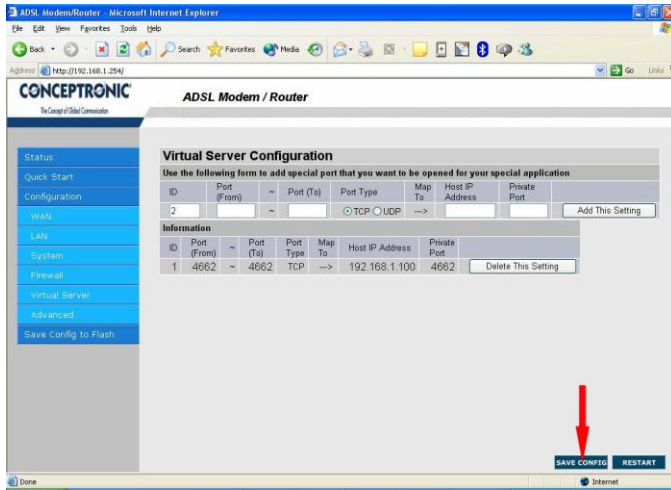


Fill in the port that you want to forward, the IP address were you want to forward to and the port you want to forward to.

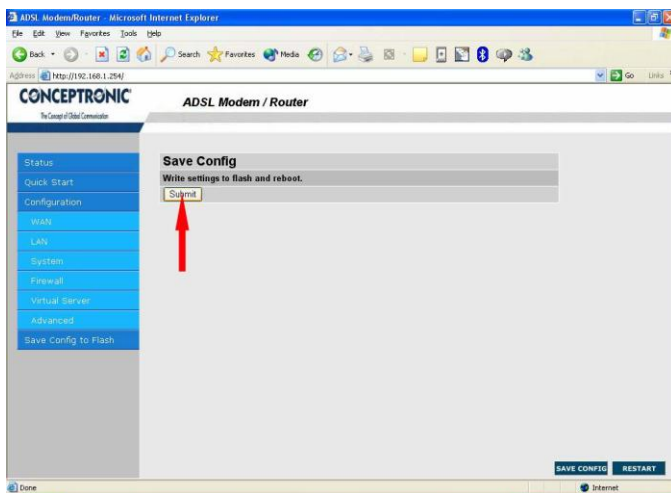
Port (From): enter the port
 Port (To) : enter the same port
 Port type : choose TCP or UDP
 Host IP : IP to forward to
 Private port : enter the same port



Click **Add This Setting**



Click **Save Config**



Click **Submit** and wait for the next message

Your settings have been saved and the modem has rebooted.