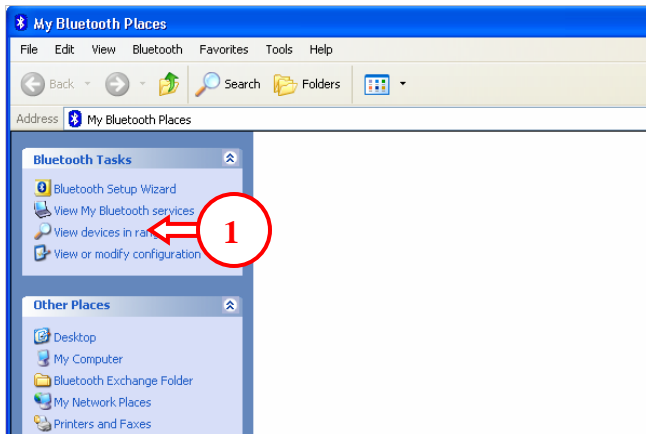


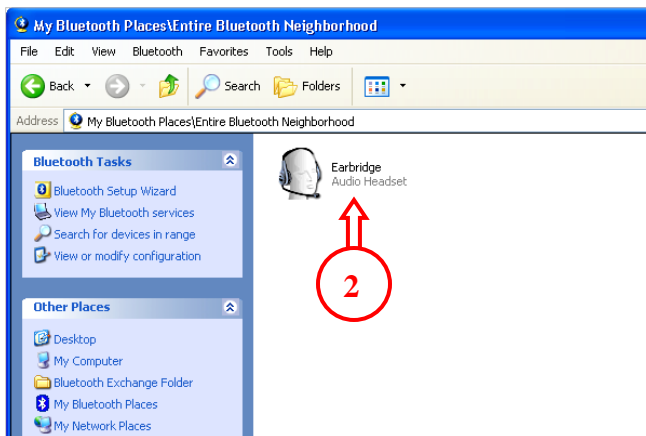
## HOW TO USE THE CBTHS2 WITH SKYPE

Before you start with the installation of the CBTHS2 you must have a Bluetooth device installed and the software of the Bluetooth device. If you have installed the Bluetooth software you can start with the pairing between the CBTHS2 and your computer. Please follow the numbers to install the Conceptronic Bluetooth headset in the correct way.

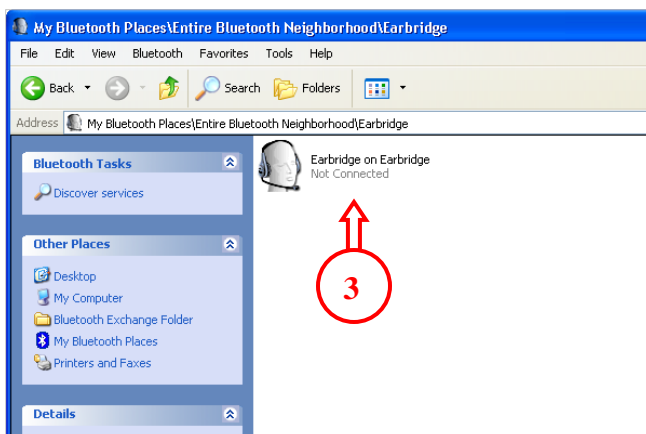
Double click the icon “My Bluetooth Places” on your desktop. Be sure that the Earbridge is in pair mode. To set the Earbridge in pair mode you have to press and hold the answering button for about 6 seconds. The leds will blink blue/red



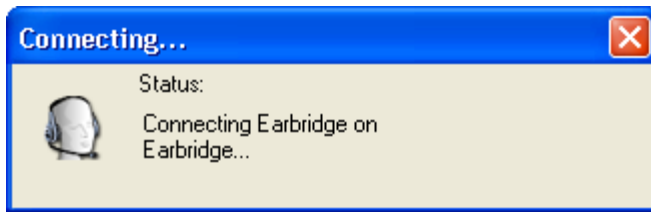
1. Click “View devices in range” to scan for the Bluetooth devices. The Bluetooth device will find the Earbridge that you have installed.



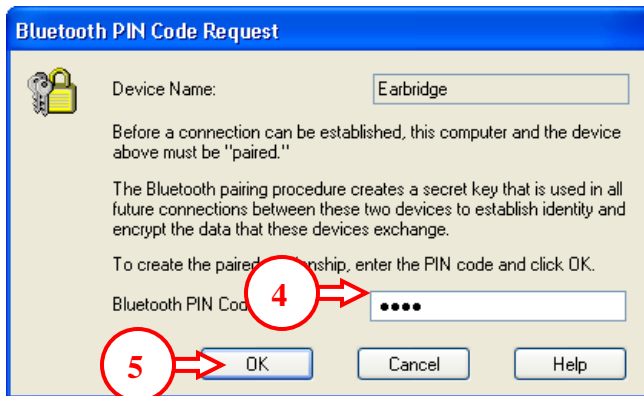
2. The Earbridge will be found. It is possible that there will be other Bluetooth devices found. Double click the icon of the Earbridge.



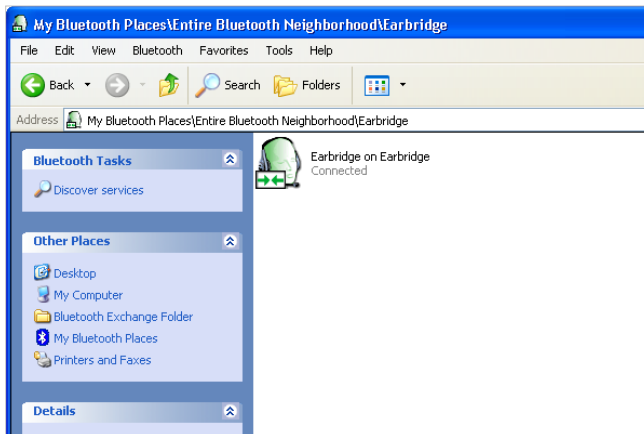
3. Double click the Earbridge icon to pair the headset with your computer.



After you have double clicked on the Earbridge you will get this message. There will appear a balloon from your taskbar with the message that there is a PIN Code requested.

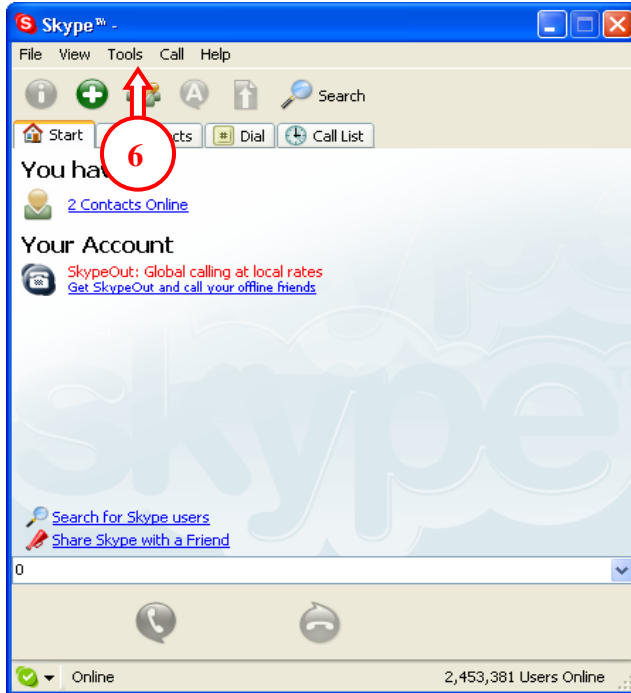


4. After you have clicked the balloon this window will appear. There you have to give the PIN code "1234" for connecting to the Earbridge.
5. Click OK.

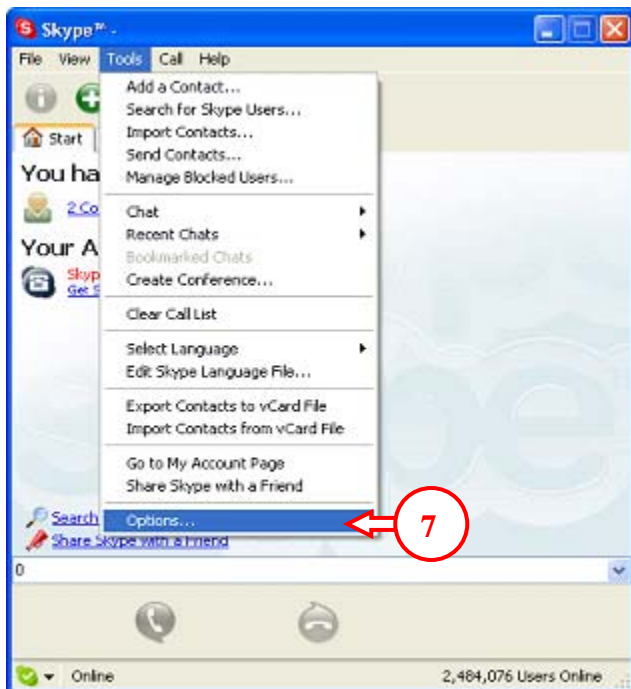


When you have a connection with the Earbridge the icon will turn green and you will hear a notification tone trough your Earbridge.

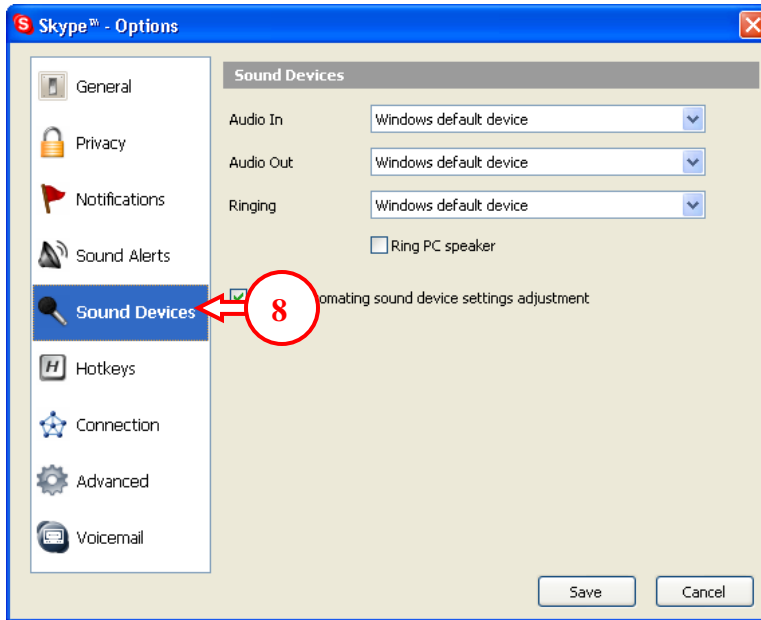
Now that you have paired the Earbridge with your computer you need to change the sound device settings in Skype. Follow the following steps to change the settings in Skype so that you can use the Earbridge correctly.



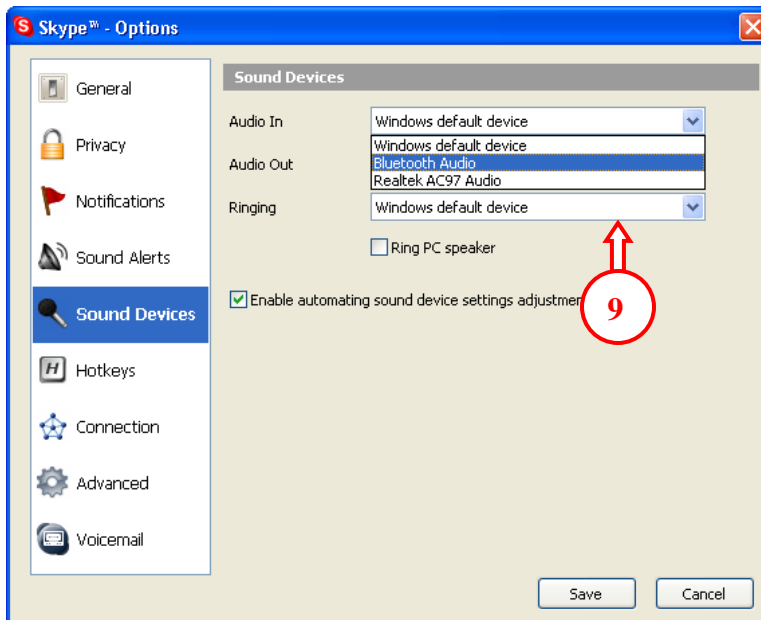
6. Start Skype, Click Tools.



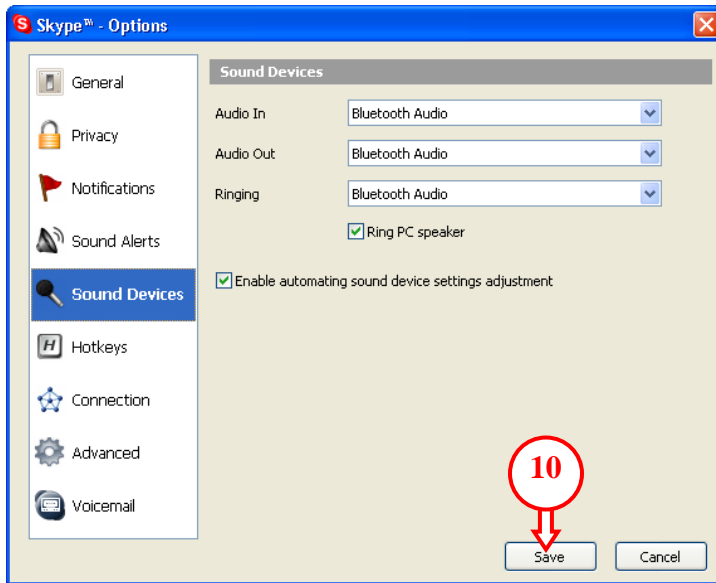
7. Click Options.



8. In the option menu click Sound Devices.



9. Make sure that "Bluetooth Audio" is selected in: Audio In, Audio Out and Ringing.



10. Click Save.

Now you can use the Earbridge for Skype to communicate with your contacts.