

“Audio Gateway” Configuration CBTU / CBT100U



Audio Gateway configuration allows use microphone and speaker PC to remote bluetooth device

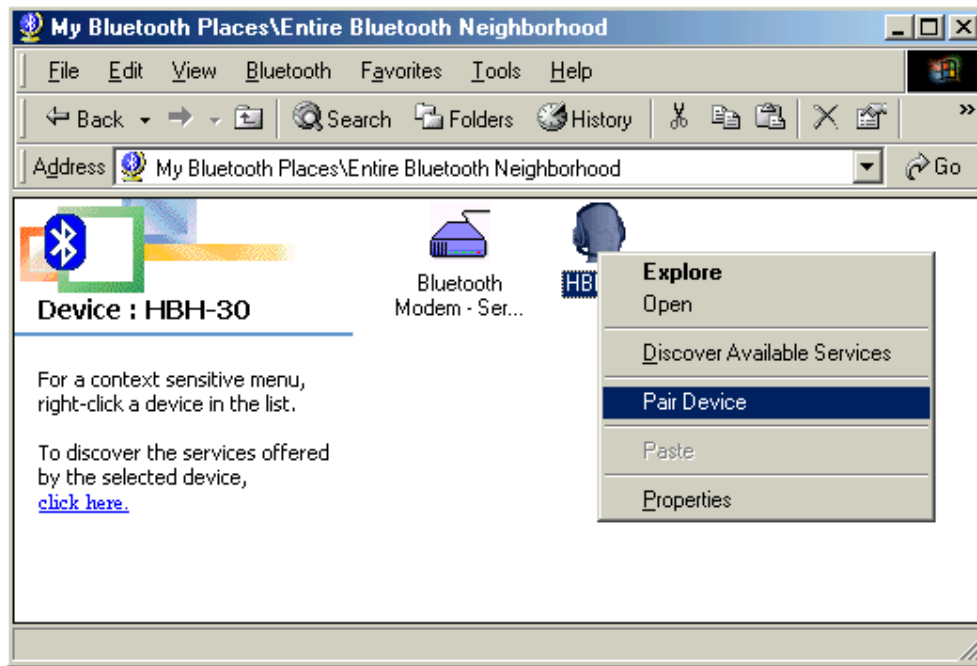


*Remember to set sound device in your PC as "Bluetooth Audio" from windows control panel.

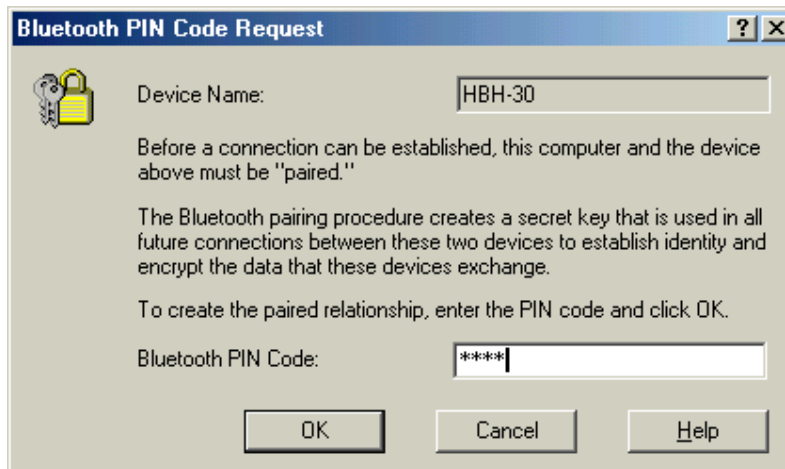
To start a new connection to the Audio Gateway service provided by other bluetooth device follow any of next alternatives:

- Through Bluetooth icon of the Windows task bar.

- From Bluetooth explorer.
- Through the Bluetooth Setup Wizard option.



From Bluetooth explorer you can do a connection with the headphone device.



Enter the Headphone PIN code. (Check how to do it in the Head Phone documentation)

How to finish a Gateway connection:

If connection was established through the icon located in the Windows taskbar, press right key on the icon and select the option Quick Connect -> Audio Gateway and select on the device that is providing the service (Active connections have a mark near his name).

Instead of this, you can access to the application My Bluetooth places, press right click on the remote service name and select the disconnect option.

Configuration

Through the option "View or modify configuration" -> "Client Applications" -> "Audio Gateway" -> "Properties" of the My Bluetooth Places option you can modify various configurations options:

- The service name: Put the current name and after enter the new.
- Enable or disable a secure connection: To activate it mark the "secure connection"