

# Using the BTW-CE on the iPAQ H3850

2002/6/29



Compaq iPAQ H3850 Pocket PC

## **Trademark(s)™ and Registered Trademark(s)®**

WIDCOMM, the WIDCOMM logo, BTW and BTW-CE are trademarks of WIDCOMM, Inc. Bluetooth and the Bluetooth logos are trademarks owned by Bluetooth SIG, Inc., U.S.A. and licensed to WIDCOMM, Inc.

Compaq, iPAQ, and H3870 are trademarks of Compaq, Inc.

Microsoft, Windows, Windows CE, Pocket PC, and ActiveSync are trademarks of Microsoft, Inc. Other brand and product names may be registered trademarks or trademarks of their respective holders.

WIDCOMM, Inc. 1

## **1. Introduction**

WIDCOMM's BTW-CE is a complete communication software solution for integrating Bluetooth wireless technology into the Pocket PC® operating system. It has all the necessary protocol and driver software to enable PC OEMs to bring wireless devices to market quickly and efficiently.

The BTW-CE DK product for ordinary Pocket PC devices consists of three parts:

- The base software CD which includes drivers, protocol stacks, support tools, and documentation. Installing this CD provides the Microsoft Windows operating system extensions that will allow your Pocket PC device to communicate using Bluetooth wireless technology.
- The Software development kit containing programming APIs, sample applications, and programming documentation. This is available as a download from the technical support section of [www.widcomm.com](http://www.widcomm.com).

The Compaq iPAQ H3850 differs from the iPAQ H3870 since it does not include an integrated

Bluetooth adapter and software. It also differs from the other members of the 36XX, 37XX, and H38XX family in that the first available COM port that is assigned to an external Bluetooth adapter is COM5 rather than COM4. This means that when you install the BTW-CE 1.0.0.11 software from WIDCOMM, the software will be improperly configured and will not run. This document will allow owners of the Compaq H3850 Pocket PC to reconfigure their device so that the BTW-CE 1.0.0.11 software from WIDCOMM will operate properly on their device.

**IMPORTANT: This document covers only the iPAQ H3850 and this CF card . These instructions may not apply to a CF card from another manufacturer.**

**IMPORTANT: The procedures outlined in this document cover only the 1.0.0.11 release of the BTW-CE software.**

**IMPORTANT: BTW-CE 1.2.0 will not correctly auto-detect the COM port settings of the CF card on an iPAQ H3850 and will not set up the device correctly. There is no workaround. This problem is currently under investigation. Contact WIDCOMM, Inc. Technical Support for a status report on this issue.**

## 2. Symptoms of the Failure

You can tell if your software is configured correctly by attempting to run CEDemoExplorer. The device should initialize correctly as shown in Figure 1 below. If the software is not configured correctly, you will see the display shown in Figure 2.

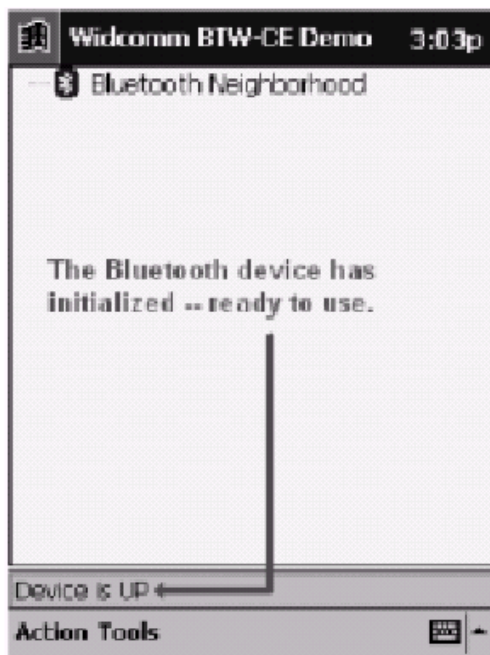


Figure 1: Software Configured Correctly

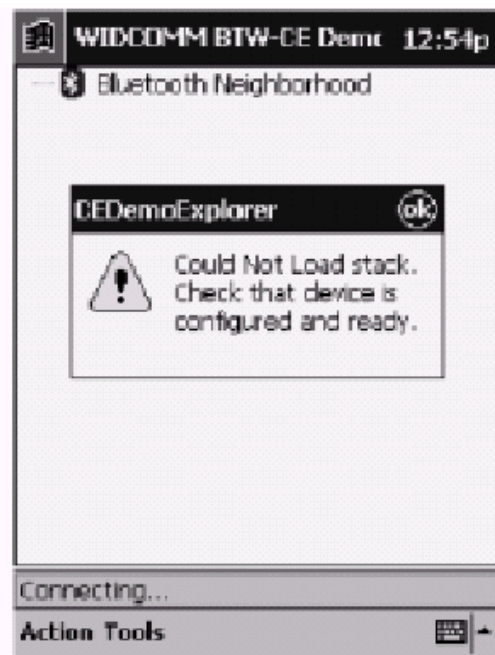


Figure 2: Configured Incorrectly

## 3. A Quick Overview of the Procedure

You should follow all of the steps outlined in this document in order to successfully configure your BTW-CE on your Compaq H3850. Here is a quick overview of the actions that you will take:

- Obtain and install a registry editor for your Pocket PC device.
- Install the CF Bluetooth Adapter on your unit.
- Install the WIDCOMM BTW-CE software on your unit.

- Using the registry editor, verify the actual COM port that is assigned to the CF Bluetooth Adapter
- If the port was COM5, leave the registry file intact. Otherwise, correct the registry file.
- ActiveSync the registry file to your iPAQ 3850 and use your registry editor to import it.
- Soft reset the iPAQ
- Attempt to run CEDemoExplorer.

If CEDemoExplorer runs successfully, then your device is working properly and you will be ready to begin using your BTW-CE software and DK.

## **4. Reconfiguring your Device**

This problem is due to the fact that the iPAQ 3850 assigns a different COM port to the CF Bluetooth Adapter than the other iPAQ models.

### **4.1 [OPTIONAL] HARD RESET YOUR POCKET PC DEVICE**

These instructions assume that you are starting with no BTW-CE software installed on your Pocket PC device. You may want to hard reset your device in order to remove any previous software that might interfere with this procedure. This step is entirely optional. See the figure in section 4.9 for information on how to perform a hard reset.

**WARNING: A hard reset will remove all software that you have previously installed on your Pocket PC device.**

### **4.2 INSTALL BTW-CE (IF NOT ALREADY INSTALLED)**

If you performed a hard reset as specified in the preceding step, you will need to reinstall your BTW-CE software and should do so now. If you have not already installed the BTW-CE software, do so now.

### **4.3 Instructions on making Bluetooth CF card work on BTW (Bluetooth software for Windows)**

1. Insert Bluetooth CF card in notebook, install driver for OX16CF950. Driver can be found in v.392 folder.
2. Install BTW on notebook.
3. After installation is complete, click Yes to reboot.
4. Double click on “billionton\_cf\_windows.reg” to add registry entries to Windows registry.
5. From Device Manager, find out which COM port is used by OX16CF950, e.g. OX16CF950 is using COM5.
6. Run regedit, go to [HKLM/Software/Widcomm/BTConfig/LocalDevice/PortNumber](#) and make sure the entry value is set for COM5
7. Save changes, close regedit.
8. BTW for Bluetooth CF should work now.

### **4.4 Instructions on making Bluetooth CF card work on BTW-CE (Bluetooth software for Windows CE)**

1. Insert Bluetooth CF card in PDA, install BTW-CE.
2. Install regedit for Windows CE
3. After installations are complete, soft reset PDA.
4. Run “Registry Editor” and add the following registry entries manually.
  - 5.1-Please remove the CF card and soft reset the PDA
  - 5.2 -Rename or delete this registry entry from the registry:  
[HKLM/Drivers/PCMCIA/CF\\_CARD-GENERIC-A569](#)  
. to for example: [HKLM/Drivers/PCMCIA/zzCF\\_CARD-GENERIC-A569](#)
  - 5.3 – Change entries to match:

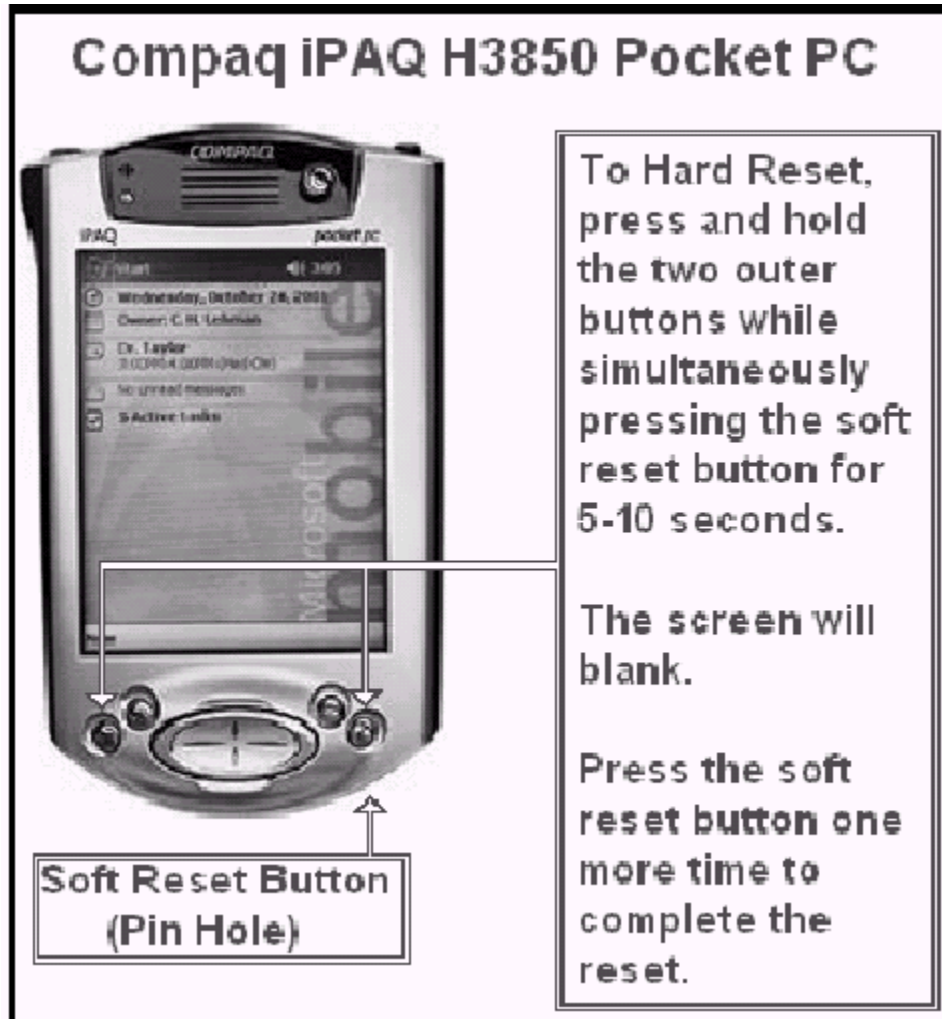
5. Close Registry Editor to save changes.

6. BTW-CE for Bluetooth CF should work now.

Note: Values in registry stated above are in decimal system.

#### 4.5 SOFT RESET THE POCKET PC

Soft reset your iPAQ H3850 in order for these settings to take effect.



**WARNING: Do NOT hard reset your Pocket PC. A hard reset will remove all software that you have previously installed on your Pocket PC device.**

#### 4.6 TEST THE CHANGES

Try to start it should start successfully.

### 5 Troubleshooting

If you follow the directions in this manual and still cannot run that was applied with the WIDCOMM BTW-CE DK, you should contact WIDCOMM, Inc. technical support for assistance.

You may do this using the on-line forms that you can access using the technical support Web pages at [www.widcomm.com](http://www.widcomm.com) or send an email to [support@widcomm.com](mailto:support@widcomm.com).