

# Application Note

## Pairing to the Ericsson T39 Phone

### Using BTW 1.2

2002/5/23



Ericsson T39m Phone

#### **Trademark(s)™ and Registered Trademark(s)®**

WIDCOMM, the WIDCOMM logo, and BTW are trademarks of WIDCOMM, Inc.

The Bluetooth trademarks are owned by Bluetooth SIG, Inc., USA and used by WIDCOMM under license.

Ericsson and T39m are trademarks of Ericsson, Inc.

Other brand and product names may be registered trademarks or trademarks of their respective holders.

## **1. Introduction**

As a technology leader in the wireless networking market, WIDCOMM's vision is to enable consumers to easily, conveniently and securely access information and services from their Bluetooth devices anytime and anywhere – from homes, offices and public places.

- BTW™ is a set of software drivers and utilities that seamlessly integrate Bluetooth technology into your desktop or laptop computer.

This document describes the procedure for discovering services on the Ericsson Bluetooth-enabled phone. Doing so requires a Psion dongle on a Microsoft Windows Laptop or Desktop computer. This document was tested using the following configuration:

- A desktop or laptop computer with an available USB interface and running the Microsoft Windows 2000 operating system.
- BTW version 1.2.1.14 with attached Psion dongle.
- The Ericsson T39m Bluetooth-enabled cell phone.

**NOTE: This procedure was tested under Windows 2000 only. On a computer running other versions of the Microsoft Windows operating system, this procedure may be slightly different.**

## **2. A Quick Overview of the Procedure**

The basic procedure for performing this operation is fairly simple. Here is a quick overview of the process:

- 1) Install BTW on your Windows Computer (98 SE, 2000, XP, or Me version)
- 2) Pair the phone to the BTW system using a pass key. You can initiate the pairing from

either the phone or the BTW system.

3) Discover services on the phone in the normal way.

**NOTE: This document only covers the procedure for pairing to the Ericsson phone and discovering its services. Making use of those services is beyond the scope of this document.**

## **3. BTW Setup**

### **3.1 CONNECTING THE USB DONGLE TO YOUR DESKTOP OR LAPTOP COMPUTER**

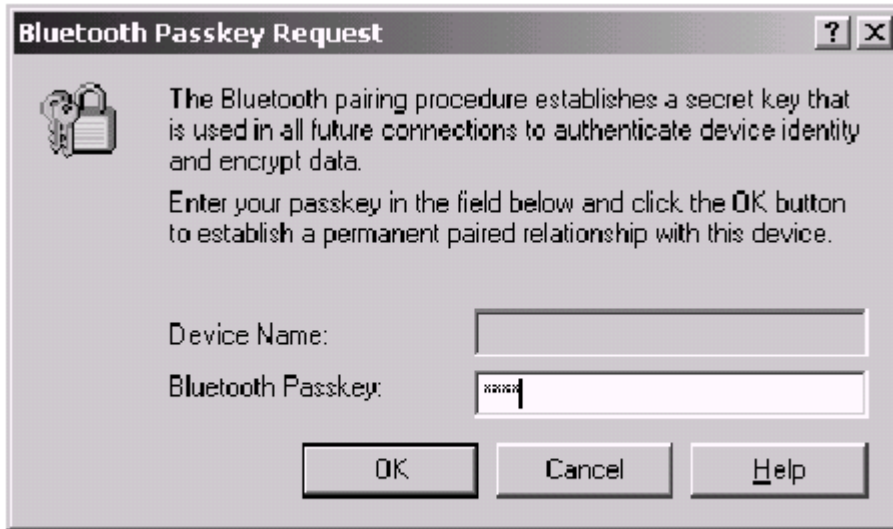
Installing the Psion dongle is quick and painless. Connect the USB cable to the matching USB connector on your PC, laptop computer, or USB hub.

### **3.2 INSTALLING THE BTW SOFTWARE**

The BTW software is installed from a CDROM using an InstallShield executable. For detailed instruction on how to install the software, see the *BTW Installation and Uninstallation Instructions*. This document will be supplied with your BTW CD and has the file name (*readme.doc* or *readme.pdf*).

## **4. Initiating Device Pairing from the Phone to BTW**

1. Press “Right Arrow” button until you reach the main menu screen
2. Press the “5” button to get to the *Extra’s* menu.
3. Press the “5” button to get to the *Bluetooth* menu.
4. Press the “2” button to get to the *Paired Devices* screen.
5. Select the *Add Device* option by scrolling up to the top of the Paired devices list and pressing the *Yes* button.
6. Select the *Phone initiates* option by high-lighting this option and then pressing the *Yes* button.
7. Select the device type to search for. If you don’t see the device type you want in the list then just select *All types* and press the *Yes* button.
8. The phone will now go into a *Searching* mode – give this a little time to complete before moving on to the next step. Once the search is complete, do the following:
  - a. Highlight the device you are interested in by using the arrow button
  - b. Press the *Yes* button
  - c. You are now prompted to enter a passkey, for example: 123
  - d. Press the *Yes* button
9. At this point a dialog will appear stating: *Pairing*
10. On the PC side, an authentication dialog will appear. You must use the same passkey that you entered on the phone and then click *OK* button. This dialog is shown below:

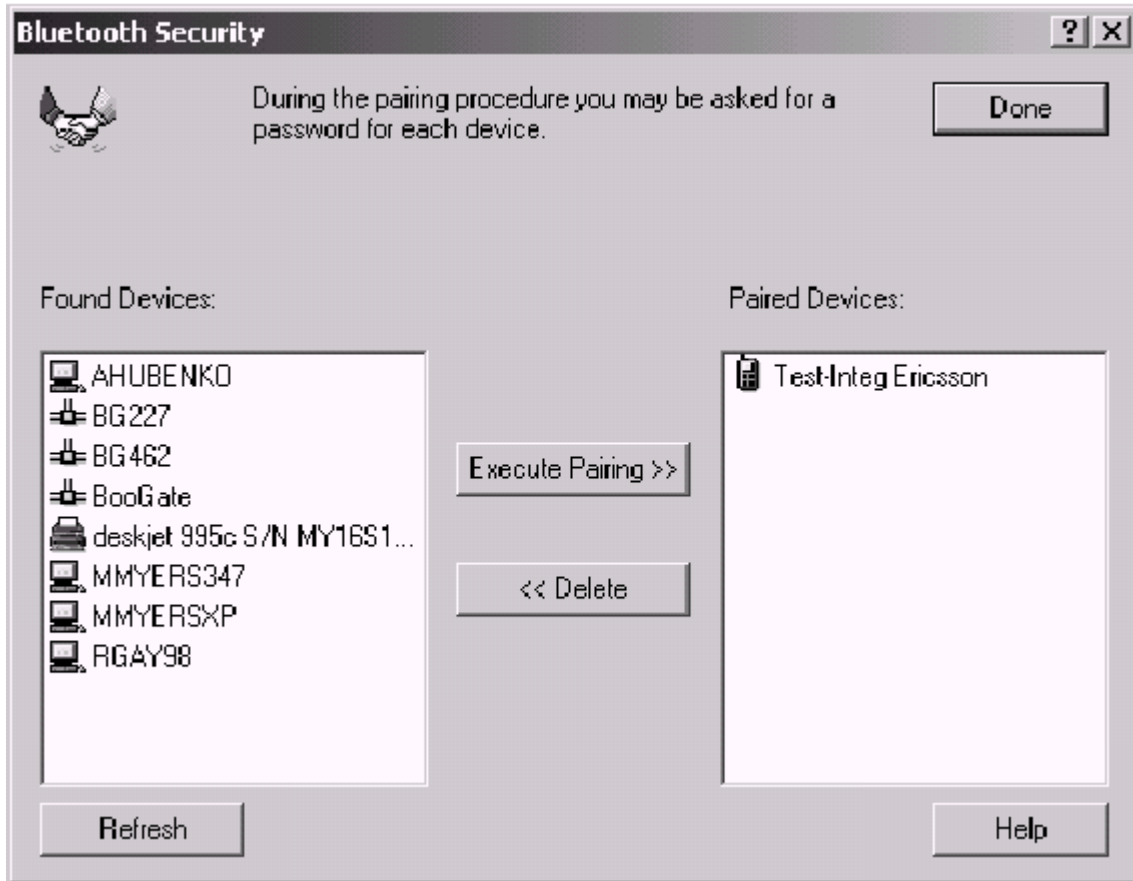


*Authentication Dialog*

11. If the pairing fails, try again. Pairing failure is indicated on the phone with a *Pairing Failed* message.
12. If pairing is successful, then the phone will state: *Pairing Succeeded*.
13. Answer *Yes* to the *Name tag* query.
14. The phone will respond with *Adding to Paired Devices* and a new entry will appear in the *Paired devices* list. You now have the ability to discover services and connect to one of these services.
15. You can verify that pairing was successful on the BTW side, by right-clicking on the BTTray icon and selecting *Setup* → *Security* as shown below:



16. The resulting *Bluetooth Security* display should show the Ericsson phone as a paired device.



17. The BTW system will now be paired to the phone.

## 5 Initiating Device Pairing from BTW to the Phone

1. Starting at the phone, do the following in order to make the phone discoverable:
  - a. Press “Right Arrow” button to get to main menu
  - b. Press the “5” button to get to the *Extra’s* menu
  - c. Press the “5” button to get to the *Bluetooth* menu
  - d. Press the “1” button to make the phone discoverable

**NOTE: The Bluetooth Phone will only stay discoverable for 3 minutes. If this time limit expires,**

**follow steps 1.a thru 1.d to set the device as discoverable again.**

2. On the PC, start up the Bluetooth Neighborhood and do a device inquiry to find the phone. Wait for the inquiry to complete.
3. On the phone, turn off the discoverable mode using the following sequence:
  - e. Press “Right Arrow” button to get to main menu
  - f. Press the “5” button to get to the *Extra’s* menu
  - g. Press the “5” button to get to the *Bluetooth* menu
  - h. Press the “1” button.
  - i. The phone will respond with a *Remain discoverable?* prompt.
  - j. Press the *No* button.

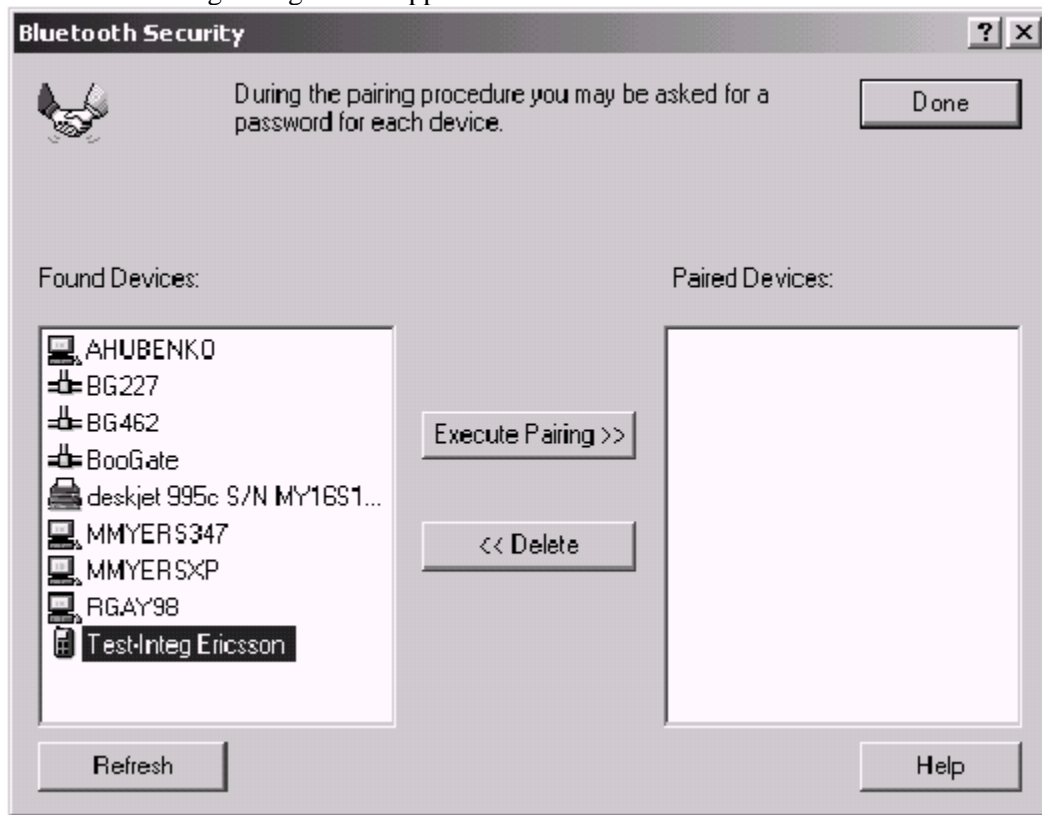
**NOTE: Discoverable Mode must be turned off before continuing with the rest of this setup.**

4. On the phone, while in the *Bluetooth* menu select option 2: *Paired Devices*
5. Select the *Add Devices* option by highlighting and pressing the *Yes* button
6. Select option “2” – *Phone Accepts*

7. Now return to the PC and right-click on the BT Tray icon. Select *Setup* → *Security* as shown below:



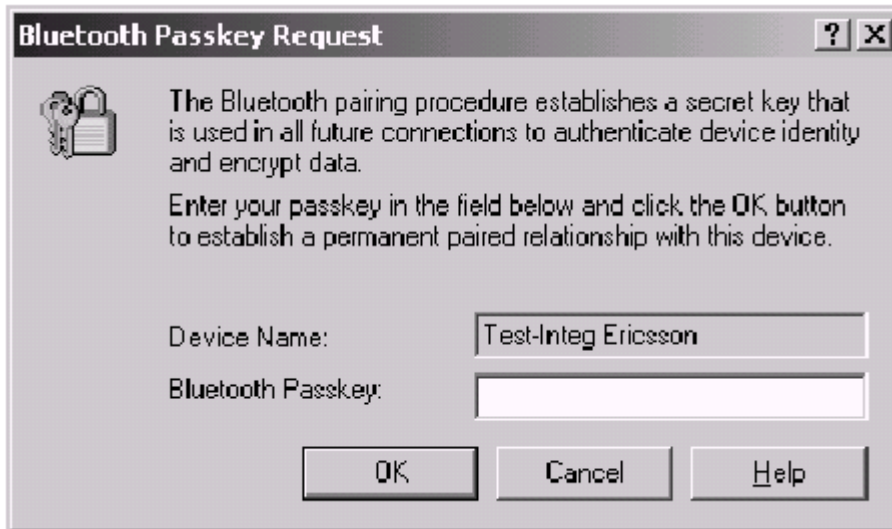
8. The following dialog should appear:



9. Click on the phone icon in order to select it.

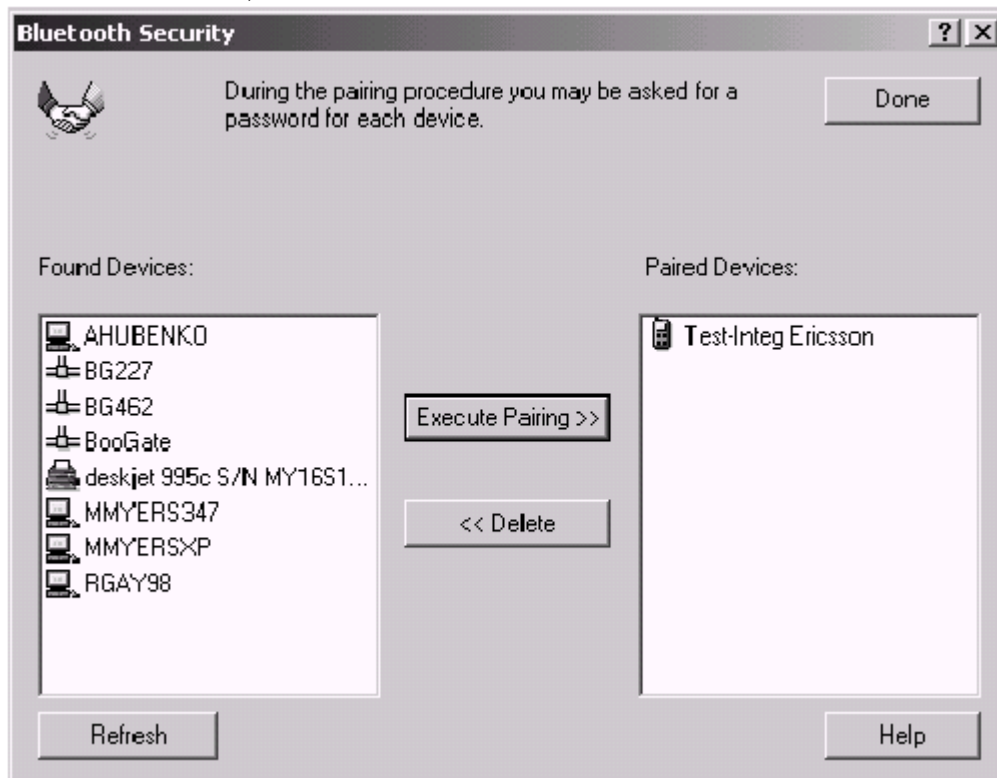
10. Click on the *Execute Pairing* button.

11. The following dialog will now appear:



Enter the same passkey that you intend to use and click on the *OK* button. The dialog will disappear.

12. On the phone a dialog should appear, *Add to paired Devices* – press the *Yes* button.
13. You are now prompted to enter a passkey. Enter the same passkey that you entered at the PC side and press the *Yes* button
14. You are now prompted to change the name tag. Press the *Yes* button.
15. On the PC side, this will move this device to the *Paired Devices* list as shown below:

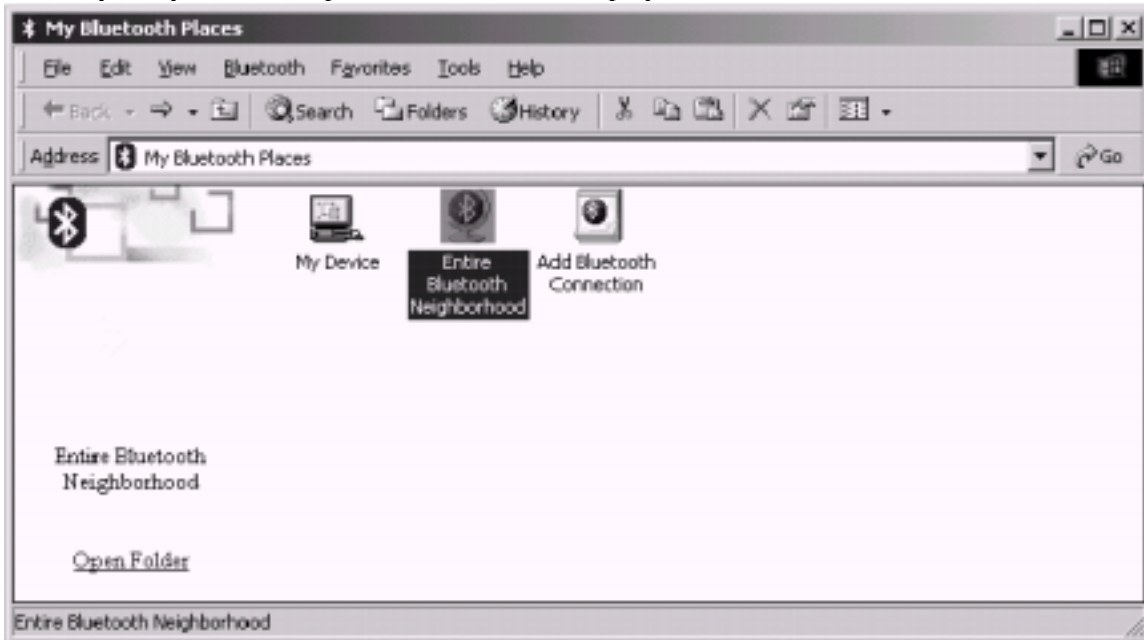


16. The BTW system is now paired to the phone.

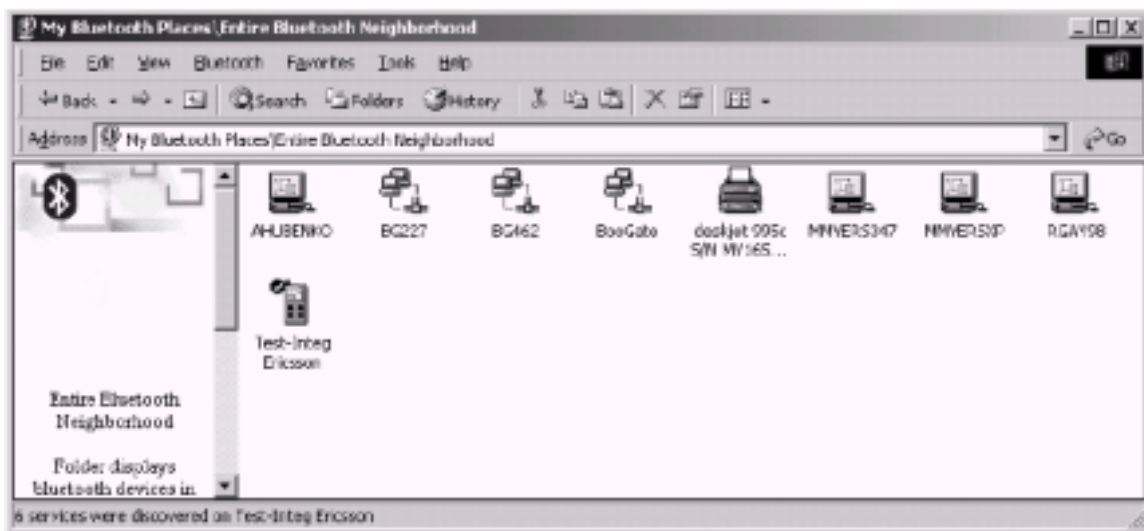
## 6. Viewing the Ericsson Phone from the BTW System

### 6.1 DEVICE LEVEL VIEW

Once you have paired the two devices, you can perform a device inquiry on the BTW system and view the phone as a Bluetooth device. Start by double-clicking on the *My Bluetooth Places* icon on your system desktop. You will see the display shown below:



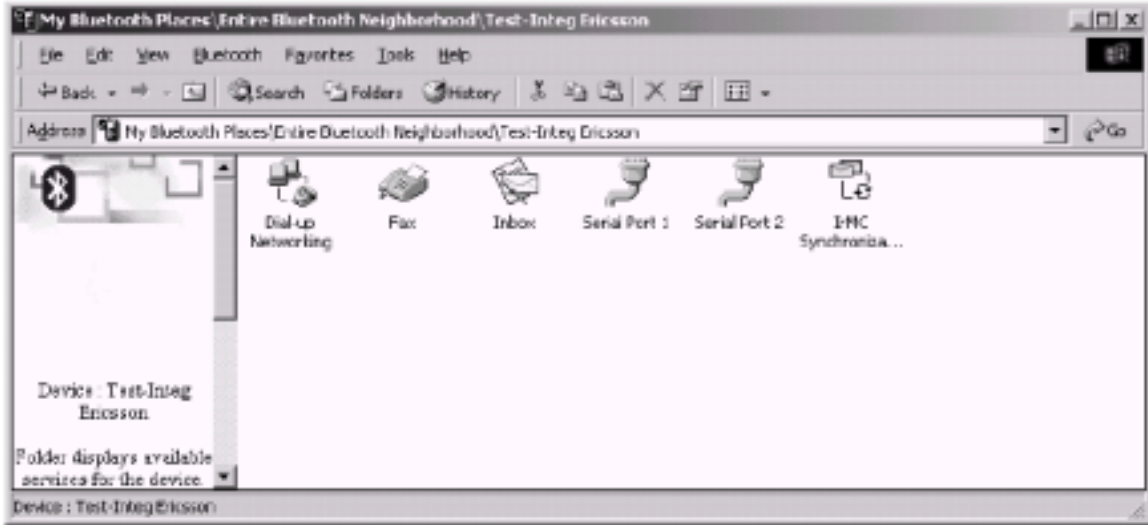
Now click on *Entire Bluetooth Neighborhood*. The information shown in the view will depend upon your Windows Explorer view option settings. If the phone does not show up, try right clicking inside of this display and choosing *Refresh* to perform a device inquiry. The phone will show up with a checkmark to indicate that it is a paired device



Large Icon Device View Showing the Paired Ericsson T39 Phone

## 6.2 SERVICE LEVEL VIEW

To view the services available on the phone, double-click on the phone in the device view. The BTW system will perform a service discovery. The information shown in the view will depend upon your Windows Explorer view option settings.



Large Icon Service View of the Ericsson T39 Phone

## 7. Using the Discovered Services

Making use of the services that you have discovered on the phone is beyond the scope of this document. Consult the documentation provided with the phone and with your BTW software in order to proceed.

## 8. Breaking up the Device Pair

Once you are finished using the phone with your BTW system, you will want to break up the device pair. You should do this on both sides (on the phone and on the BTW system) in order to completely break up the pair.

**WARNING: Failing to break the pairing relationship on both sides can have unpredictable results and may compromise Bluetooth security.**

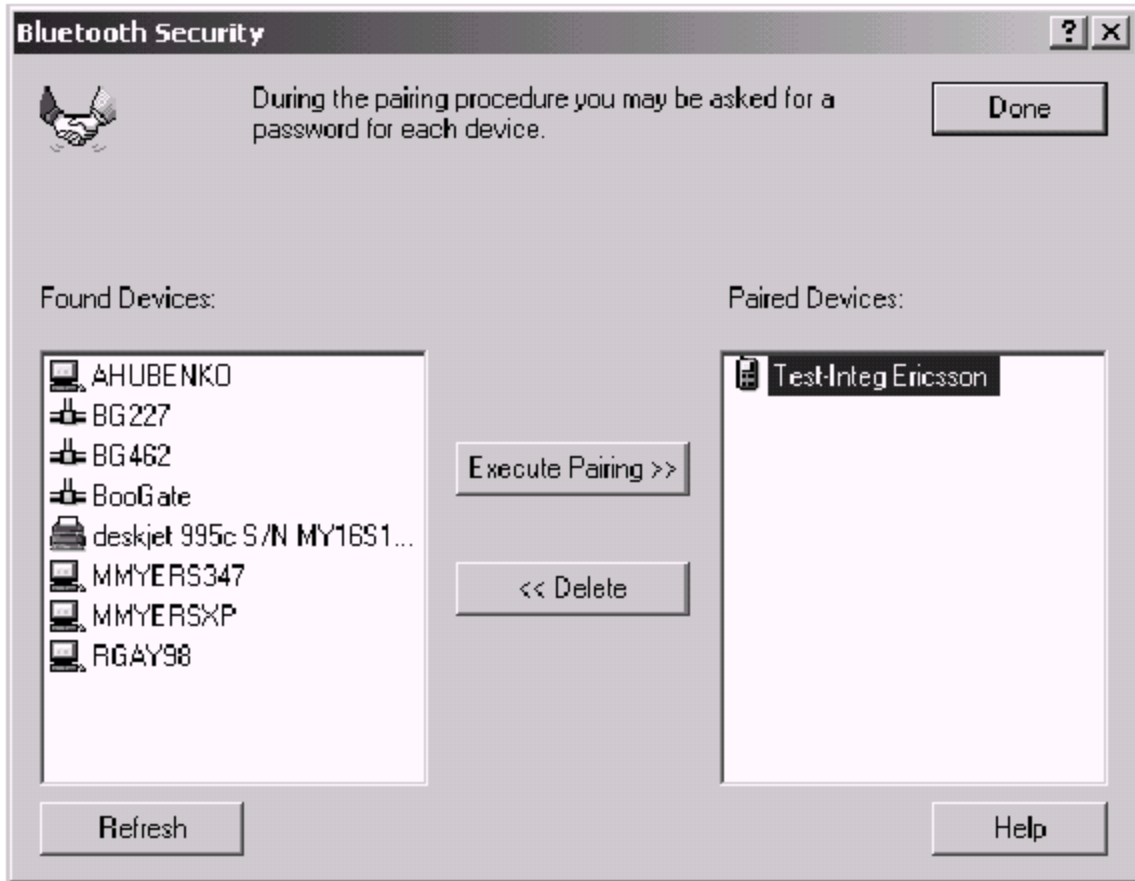
### 8.1 ON THE BTW SYSTEM

Right-click on the BTTray icon and use the *Setup* → *Security* sequence to bring up the *Bluetooth Security* dialog as shown below:

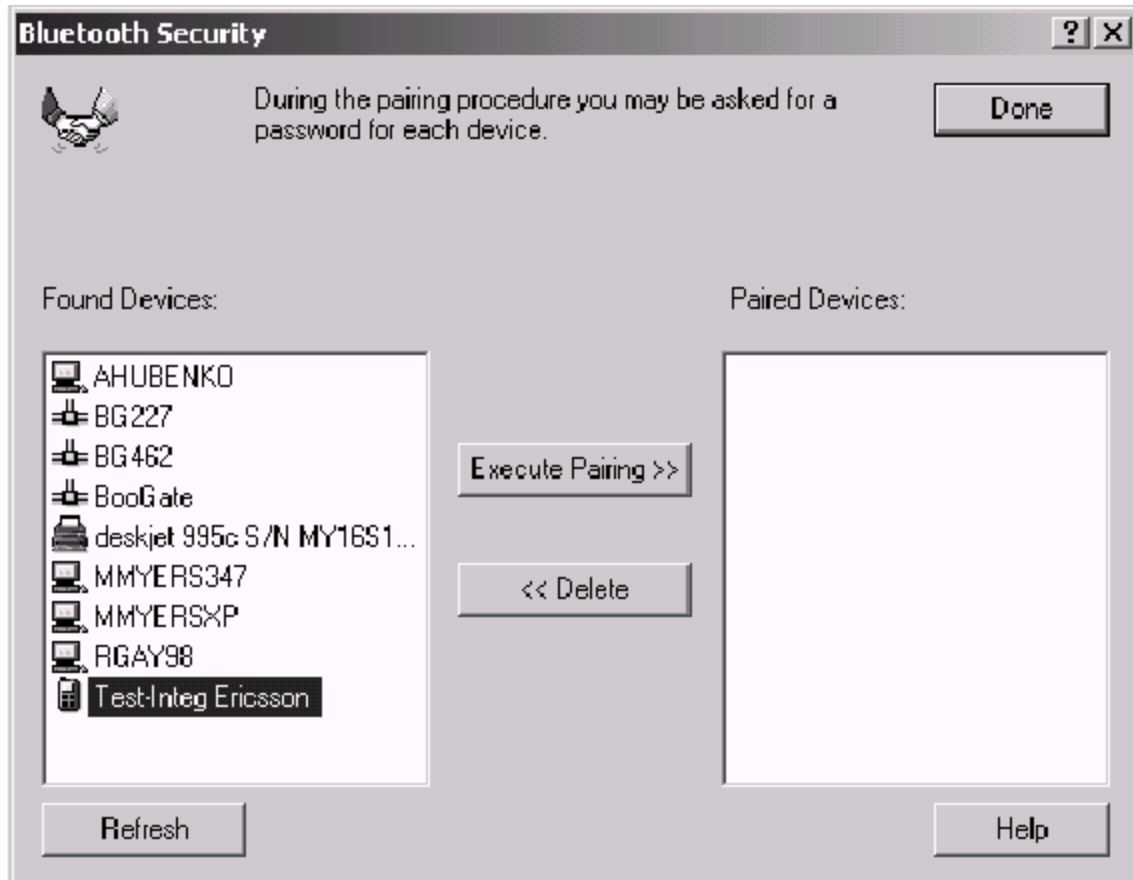


The resulting display should show the Ericsson phone as a paired device. Click on the phone entry in order to select it:





Now click on the *Delete* button in order to delete the pairing relationship. You will see the device move from the *Paired Devices* list to the *Found Devices* list as shown below:



Click on *Done* in order to complete the operation and break up the device pair on the BTW side.  
WIDCOMM, Inc. 11

## 8.2 ON THE ERICSSON T39

1. Press “Right Arrow” button until you reach the main menu screen
2. Press the “5” button to get to the *Extra’s* menu.
3. Press the “5” button to get to the *Bluetooth* menu.
4. Press the “2” button to get to the *Paired Devices* screen.
5. Select the paired device (the BTW system) using the arrow keys.
6. Press the *Yes* button.
7. Select the *Delete* menu item and press the *Yes* key.
8. The phone will respond with a *Delete?* confirmation message. Press the *Yes* key to confirm the deletion.

## 9. For Troubleshooting or Further Information

For additional technical information or troubleshooting advice, see the following WIDCOMM documents:

- *BTW Installation and Uninstallation Instructions.* This document is supplied with your BTW CD and has the file name *readme.doc* or *readme.pdf*.
- *BTW Windows 2000 Release Notes.*
- *BTW User Interface User’s Guide and Reference.*

If you still cannot succeed using the steps outlined in the document, contact WIDCOMM technical support. The preferred method of doing this is to use the on-line forms for BTW. In

order to access these forms, you will need the user name and password that was supplied along with your WIDCOMM product. You can access these forms from <http://www.widcomm.com/Support/index.asp> or send an email to [support@widcomm.com](mailto:support@widcomm.com)