

BASIC GUIDE FOR SETTING CH3B2E



Unit assembly

First step needed it's install hard drives in your CH3B2E enclosure, to do it you can follow installation guide that it's included in product box. If you want you can also download it from following link:

http://download.conceptronic.net/GRABNGO/CH3B2E/CH3B2E_Assembly_A4_Reverse_Pages.pdf

Getting Started

Once hard drives are connected to CH3B2E you can proceed to connect power supply and data cable, you can select if you want connect through USB or eSATA to your computer.

NOTE: When you have connected the CH3B2E to your computer with eSATA, it is possible that the unit will only show 1 active harddisk LED. This is caused by your eSATA controller, which cannot handle multiple SATA harddisks on 1 connection. To solve this issue, there are multiple solutions:

- A. Connect the CH3B2E to your computer by USB.
- B. Configure the CH3B2E to 1 of the other harddisk configurations.
- C. Replace your eSATA controller by an eSATA controller which supports multiple SATA harddisks on 1 connection.

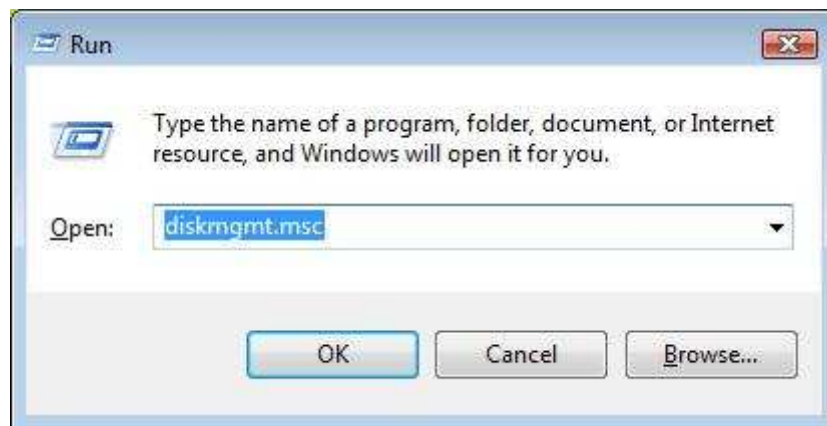
Formatting hard drives

If you have plug two disks correctly formatted in CH3B2E the device will automatically display both HDD in your computer.

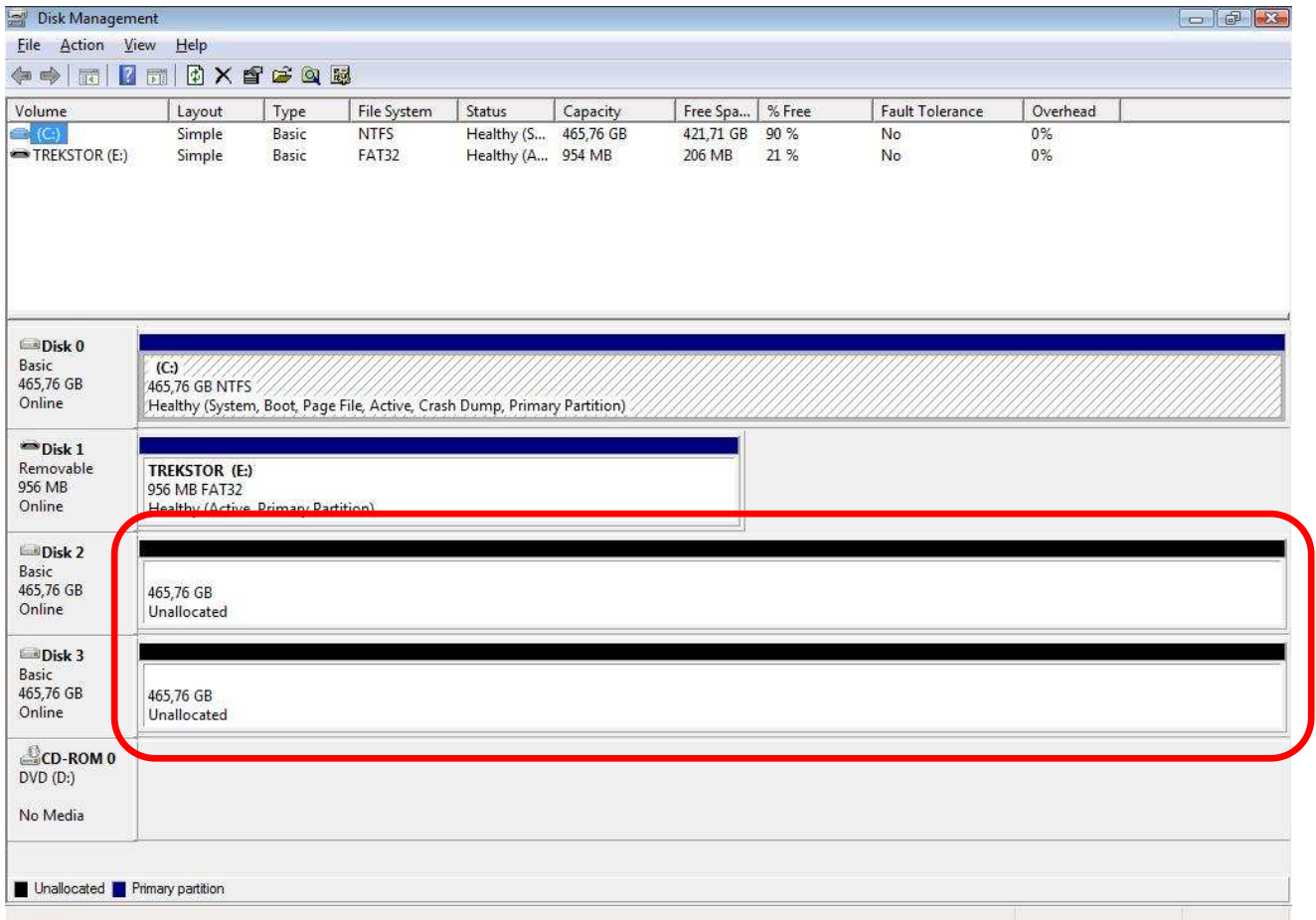
If you have plug two HDD without partition you will need format both HDD to make them visible by the operating system.

Format HDD under Windows Vista are described in following steps. When formatting in a different version of Windows the steps below can vary.

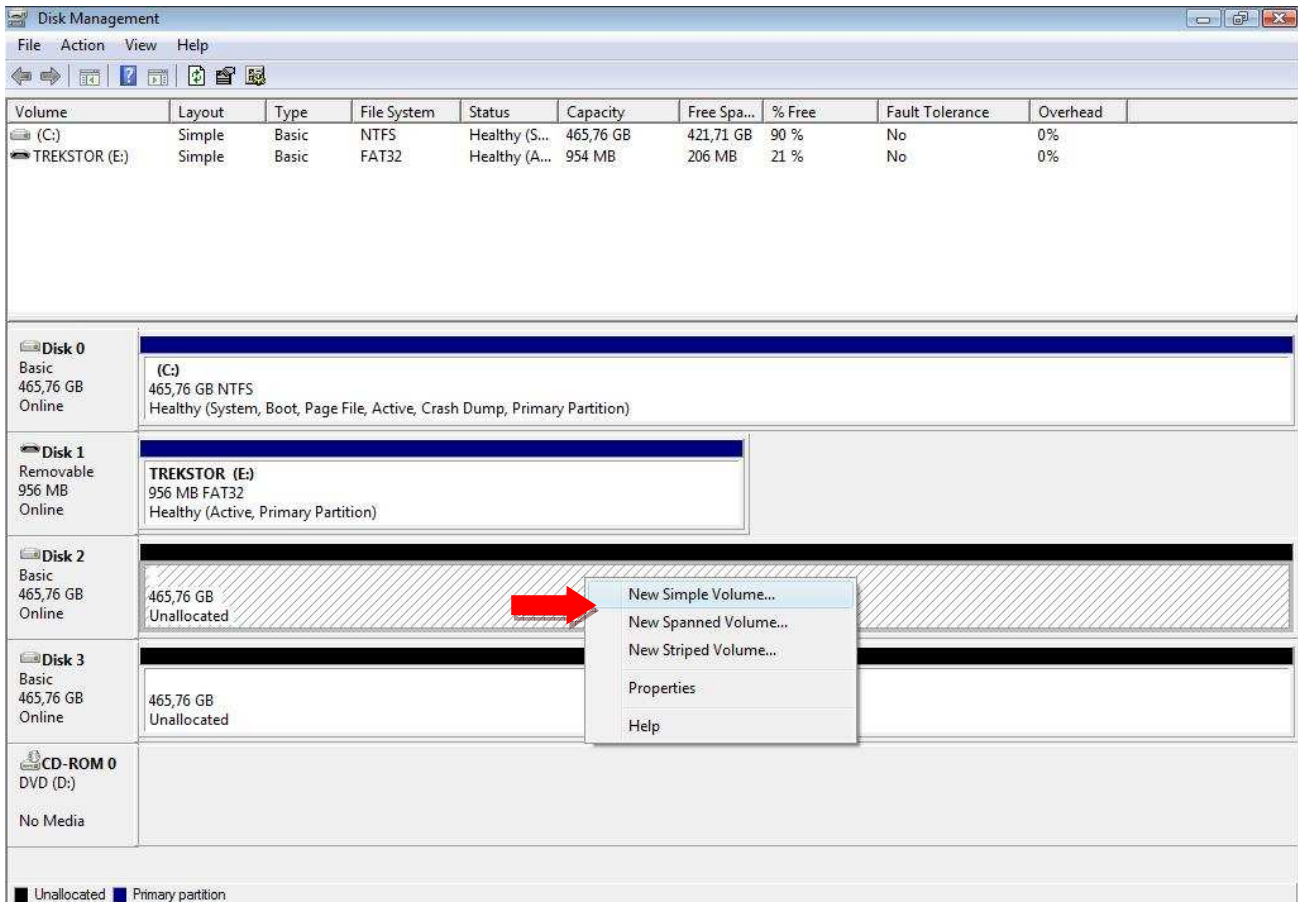
- Click on “**Start**” button and select “**All Programs**”, “**Accessories**”, “**Run**”.
- Enter command “**diskmgmt.msc**” (without the quotes) and click “**OK**” to run the command.



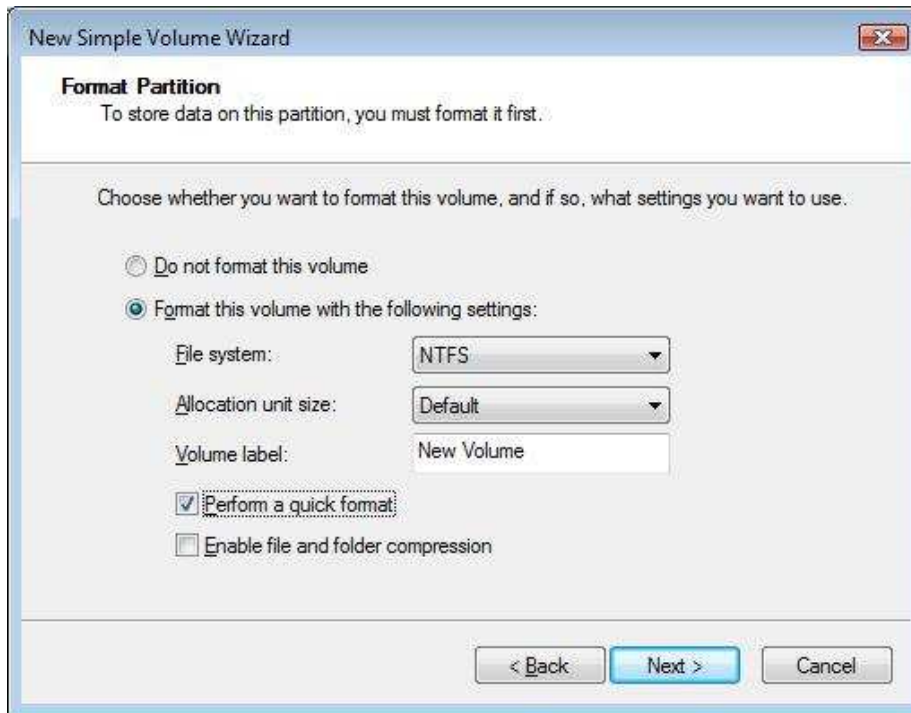
Disk Management tool of Windows will appear on your screen.



- Select your new harddisk configuration from the bottom section of the list.
- Right click your new harddisk configuration and select “New Simple Volume”.



- The Format Wizard will appear on your screen. Click **“Next”** to continue.
- Select size for your new harddisk configuration. By default, the maximum size is specified. If you want to create multiple volumes on your harddisk configuration, reduce the size to the required size of your first volume. If you want to create 1 volume, keep the maximum size. Click **“Next”** to continue.
- Select which drive letter you want to assign to the new volume. By default, the first available drive letter is shown. Click **“Next”** to continue.
- Select your format options. You can change the file system, change the volume label and choose for **“Perform a quick format”**. Click **“Next”** to continue.



Note : Partitions bigger than 32GB can only be formatted with the NTFS file system when using the Windows Disk Management.

- You will see a summary of the selected commands. Select “**Finish**” to close the Format Wizard and start formatting your harddisk configuration.



When the format is completed, the harddisk configuration will be shown in the Disk Management as “**Healthy**”.



You can now use the formatted harddisk configuration.

Follow same steps for the other hard disk.

Hard drives will be visible on your PC and the device will be configured by default in JBOD.

JBOD: The harddisks inside the unit are configured as single disks. You will have 2 volumes. For example if you have two 1TB hard drives your PC display two 1TB hard drives.

If you want configure your device with other settings, such as SAFE (RAID 1), BIG, SAFE33, SAFE50, FAST (RAID 0) perform the following steps.

If you want configured your CH3B2E in JBOD mode you have finished with the configuration and you can use now the device.

Steelvine Software Installation

Steelvine is included in the product CD or you can download from following link:

http://download.conceptronic.net/GRABNGO/CH3B2E/CH3B2E_SW_v5.1.24.zip

It is recommended that you restart your computer once the software is installed.

Verify that your CH3B2E is properly connected to the power supply and through one of two data connections, USB or eSATA.

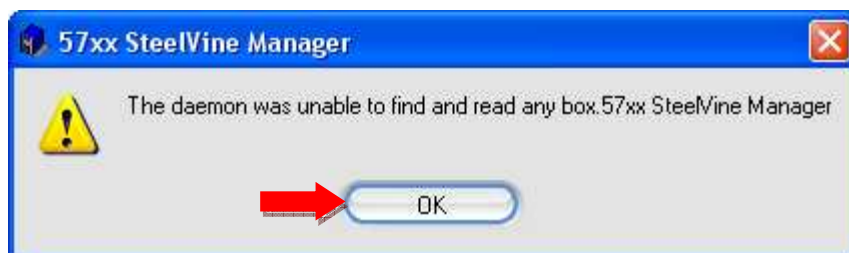
When the installation of the 'Steelvine Manager' is complete, you can view and/or change the harddisk configuration of your CH3B2E.

You can open the 'Steelvine Manager' by selecting the shortcut from your Start Menu, or by doubleclicking on the system tray icon..



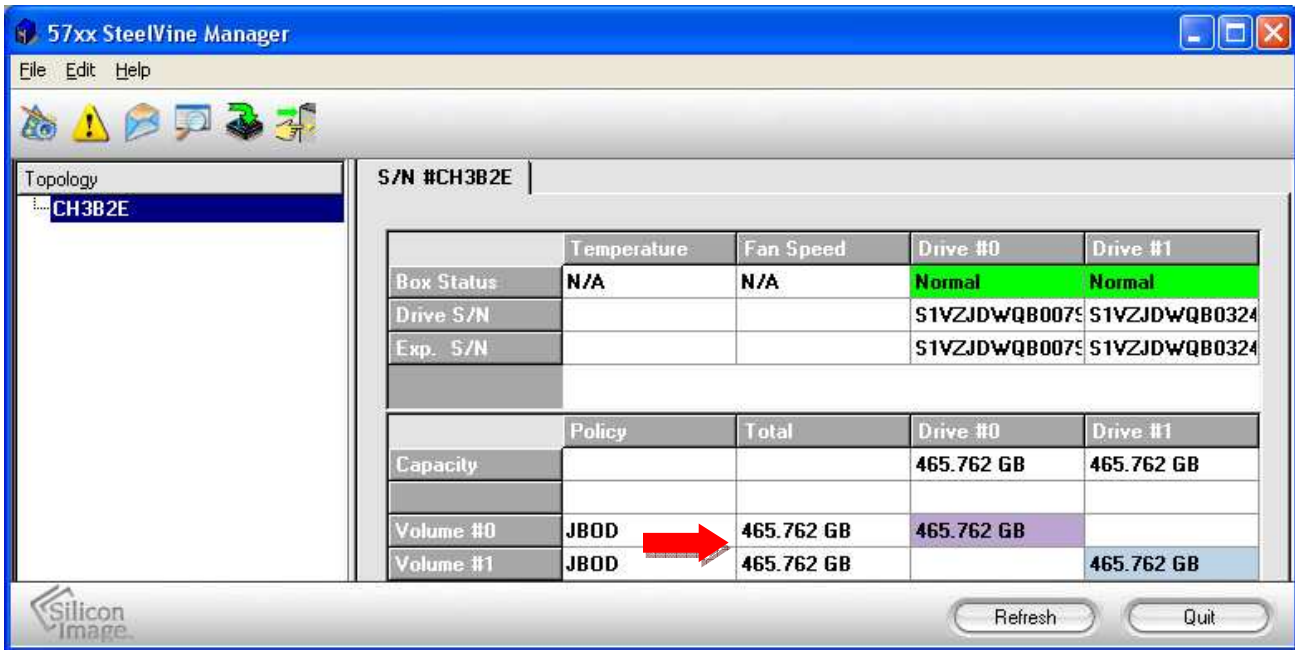
When the software is started, the main software window is shown on your desktop and the connected CH3B2E unit(s) will be listed in the left part of the window, indicated with the serial number of the unit.

If you run Steelvine software and you get this message:



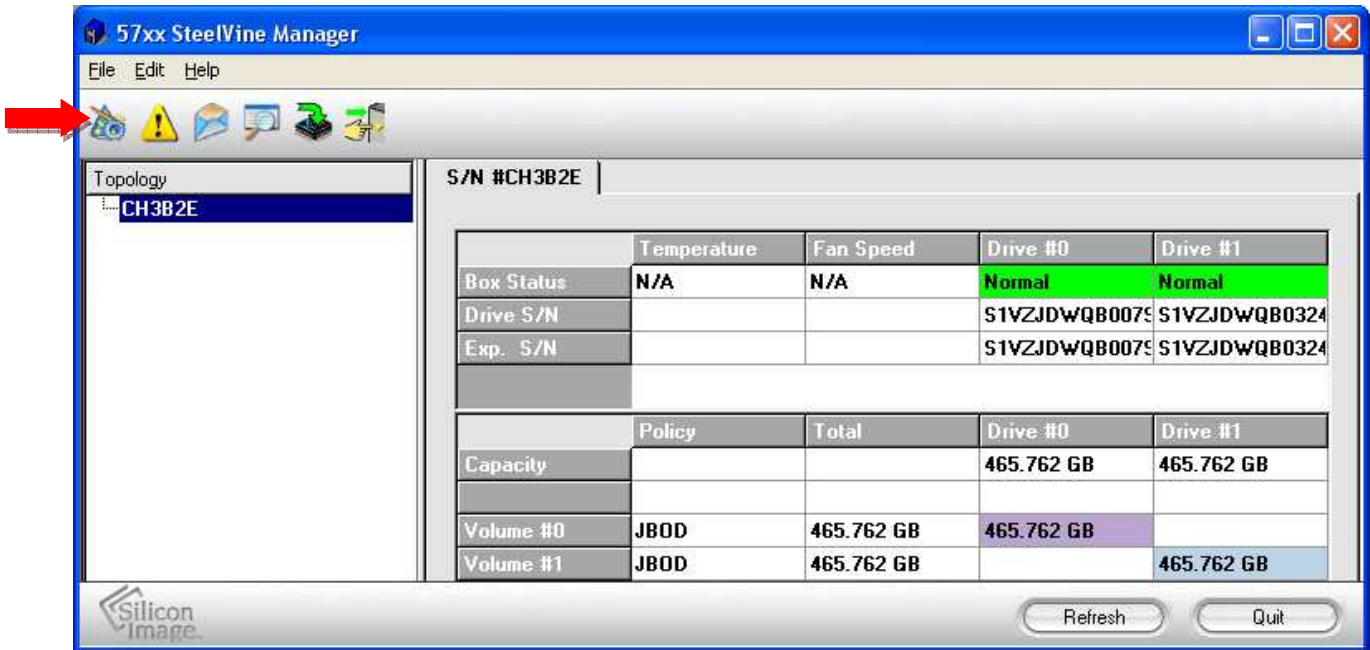
It's possible that device need more time to load. Click OK to close software and wait two or three minutes, after which the software running again Steelvine.

If the device has successfully loaded you get the following screen:



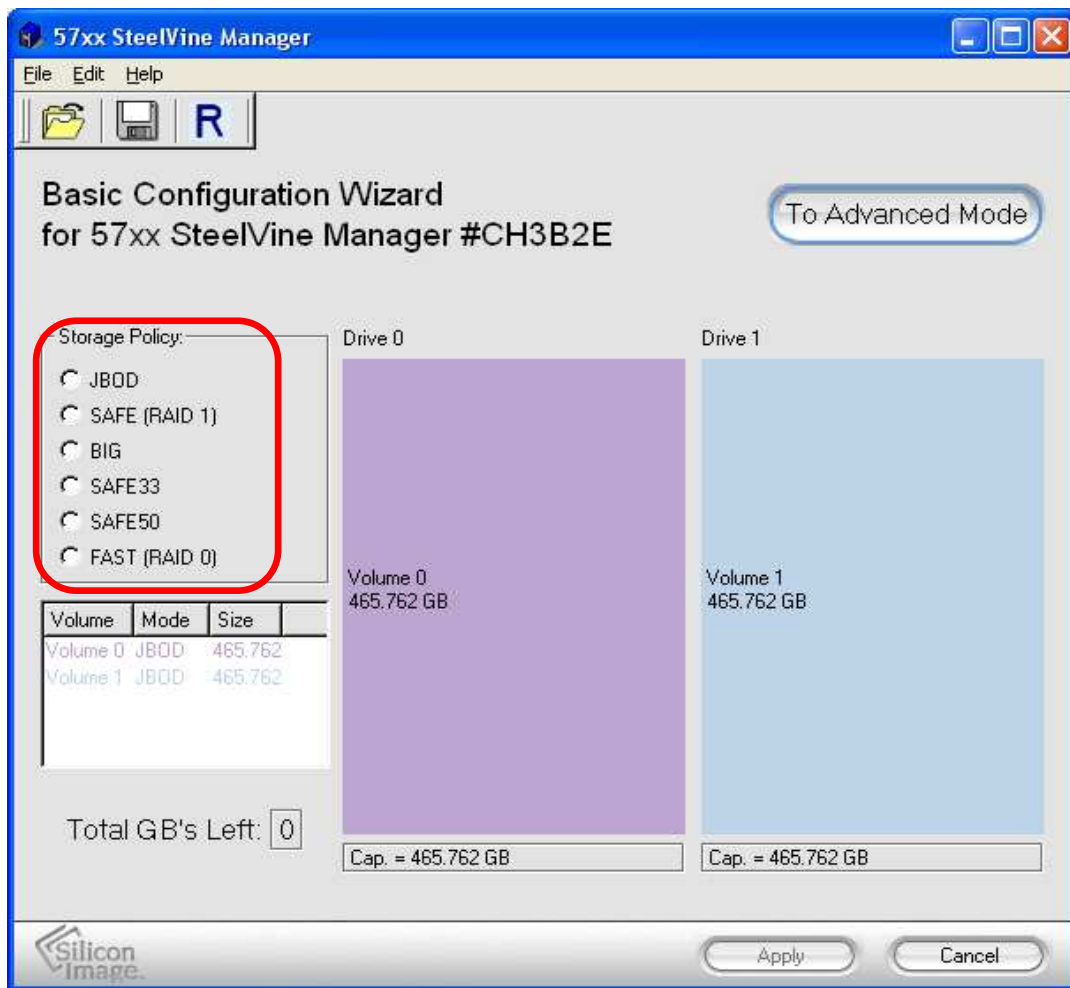
If you run the software and you can't see CH3B2E hard drives you can force detection clicking on File → Scan Drives.

Click on the icon "Box Set" and enter password "admin" (without quotes).



At this point it is necessary to make a disk configuration.

There are several modes: SAFE (RAID 1), BIG, SAFE33, SAFE50, FAST (RAID 0).



The following explains each of them.

SAFE (RAID 1): The harddisks inside the unit are configured as a mirror configuration.

You will have 1 volume with the size of the smallest HDD. The other HDD will be a duplication of the 1st harddisk.

BIG: The harddisks inside the unit are configured as 1 drive with a total storage capacity of both HDD's.

SAFE33: The harddisks inside the unit are partially configured as mirror configuration (33%).

The remaining capacity is configured as BIG volume.

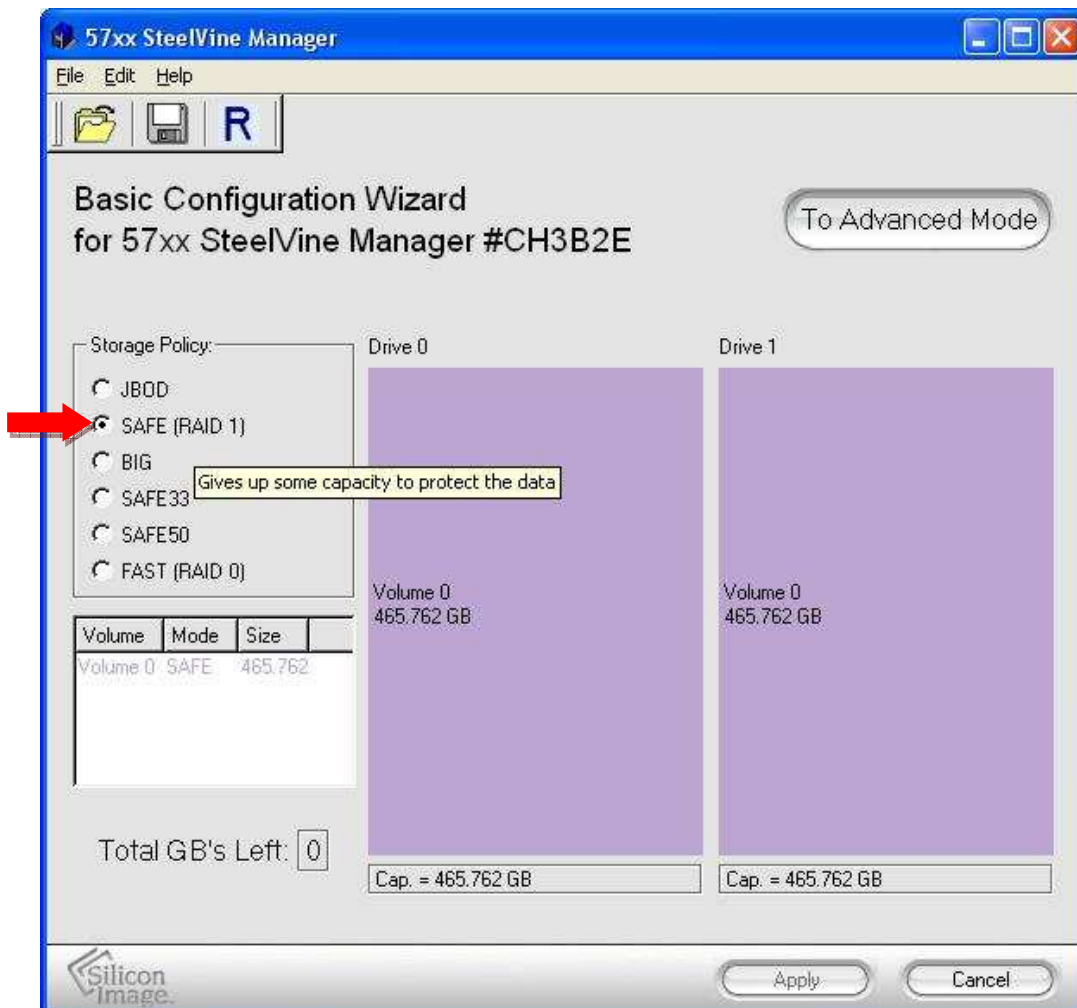
SAFE50: The harddisks inside the unit are partially configured as mirror configuration (50%).

The remaining capacity is configured as BIG volume.

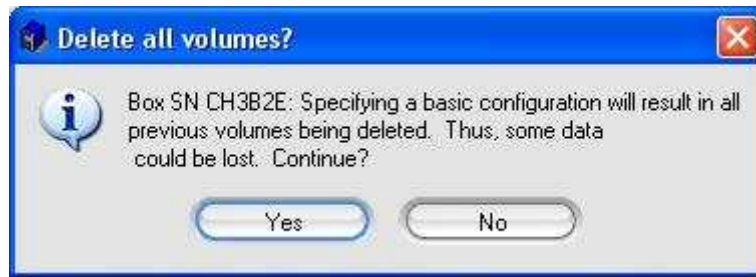
FAST (RAID 0): The harddisks inside the unit are configured as 1 drive with a total storage capacity of 2 times the size of the smallest HDD.

Usual configurations used by users are RAID 1 and JBOD. In the following steps we explain you how to configure a RAID 1, JBOD configuration has been explained above.

Select SAFE RAID 1 in configuration menu:



A message it's shown to inform us that disks data will be erased. Click on YES.



Click Apply and the process of creating the units will begin.

This process may take several minutes.

Once finished the process of setting your unit will be configured in RAID 1 and visible on your PC.