

How do I install a USB printer attached to my CH3SNAS in Windows Vista?

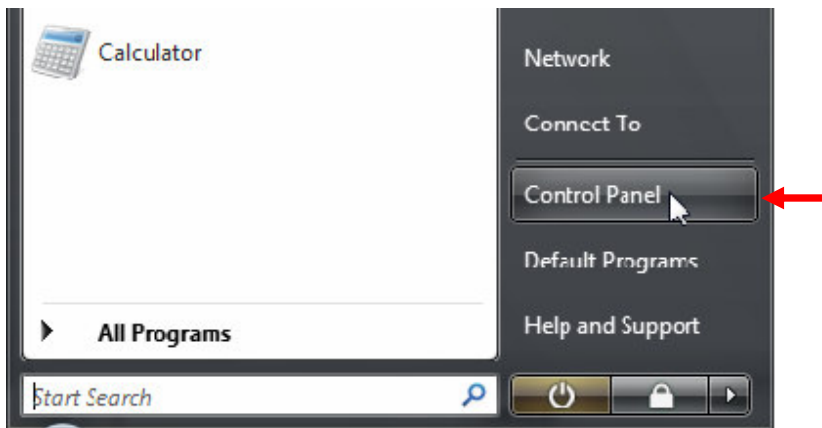
This how to document explains the installation of a USB printer attached to the Conceptronic CH3SNAS in Windows Vista. If you are using another operating system, please refer to the FAQ on our website (www.conceptronic.net).

Note:

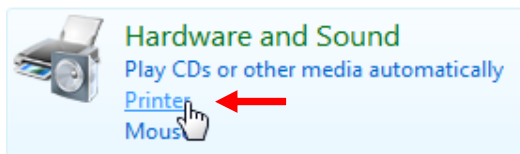
The print server inside the CH3SNAS is designed for single function printers. Therefore multifunctional printers are not supported. It is possible that the print function of your multifunctional printer works, however we cannot guarantee this.

It is not needed to change a setting in the configuration of the CH3SNAS to make use of the print server.

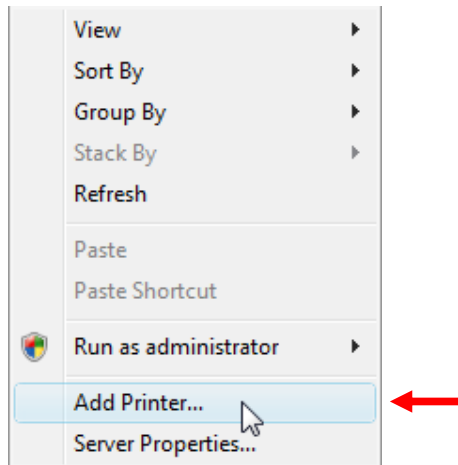
1. To start the installation procedure of your USB printer, click on 'Start' and select 'Control Panel'.



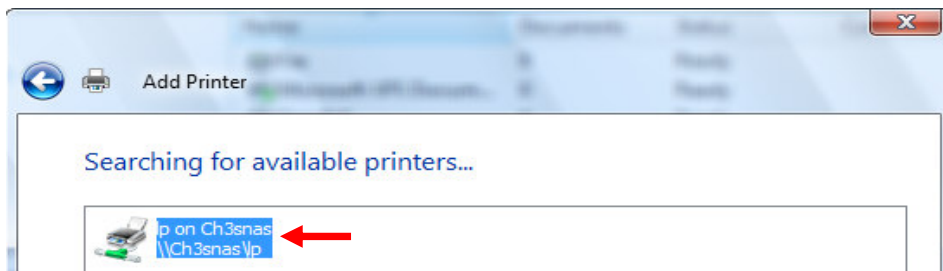
2. Click on 'Printer'.



3. Right click in the middle of the window at an empty field and select 'Add Printer'.



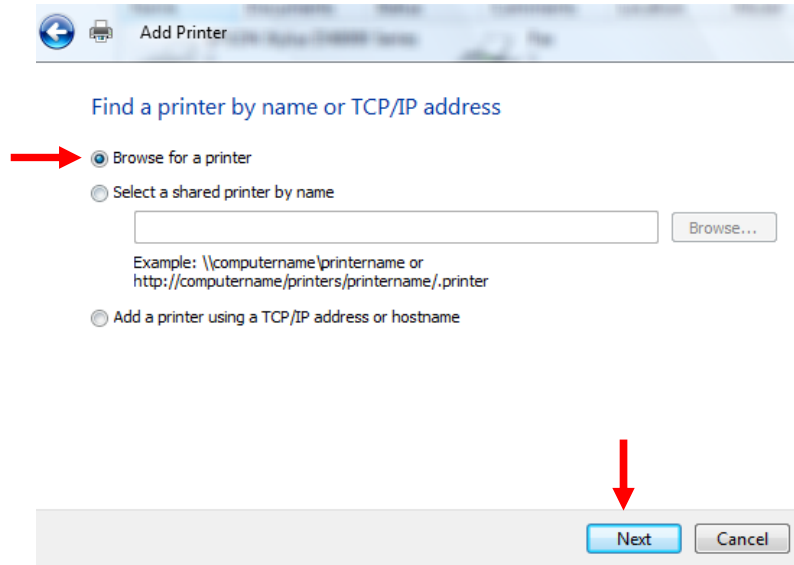
4. Now select 'Add a Network, wireless or Bluetooth printer'.
5. Windows Vista will now search for available printers. If you are using a CH3SNAS and it is correctly connected and configured select 'lp on Ch3snas' and click 'Next'.



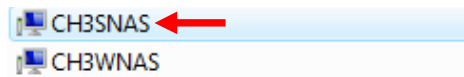
- 5.1. If your CH3SNAS isn't found automatically click on 'The printer that I want isn't listed'.

➔ The printer that I want isn't listed

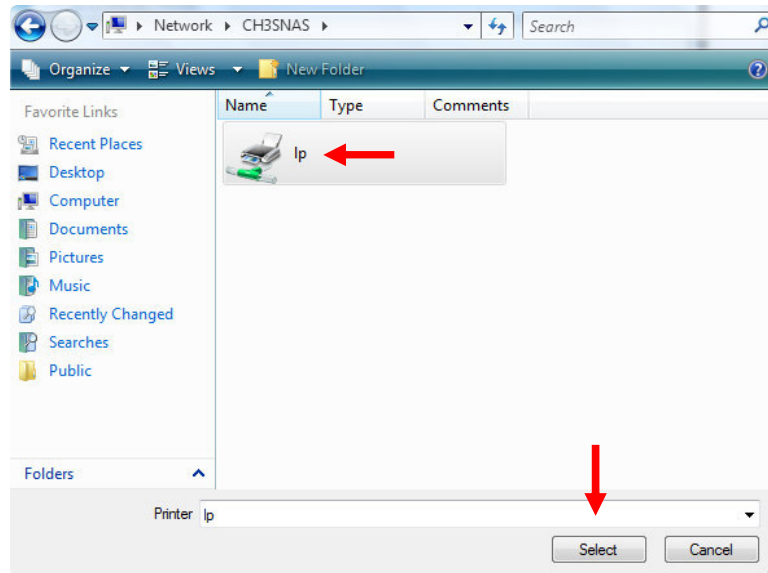
5.2. Make sure 'Browse for a printer' is selected and click on 'Next'.



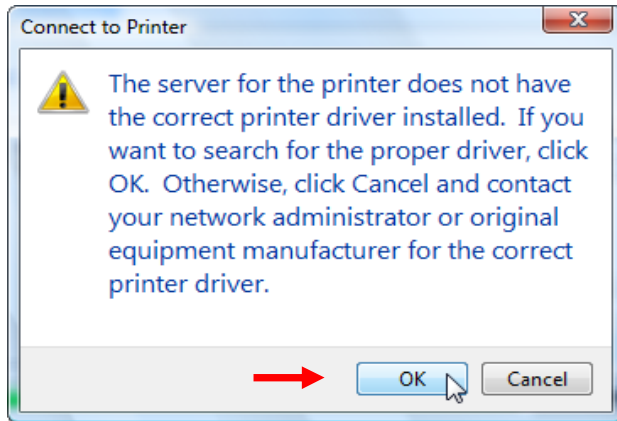
5.3. Browse to your CH3SNAS and click 'Select'.



5.4. Select 'lp' and again click 'Select'.

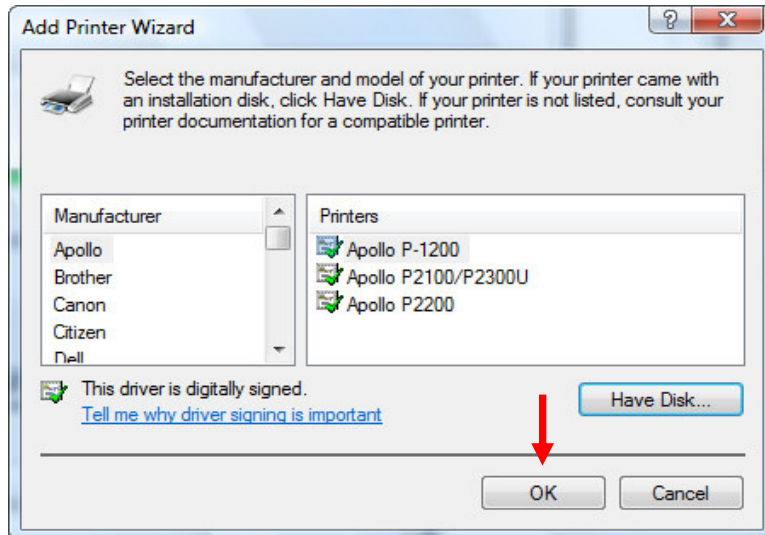


6. Windows will show the following message, click “OK” to continue.



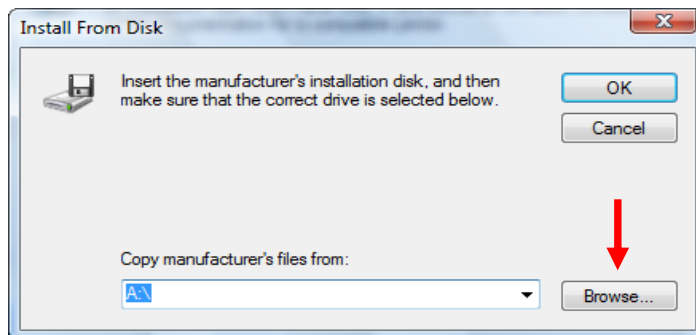
The print server does not have the correct driver and it needs to be installed.

7. If your printer is listed, select it from the list and click “OK”, proceed with step 8 of this How To.

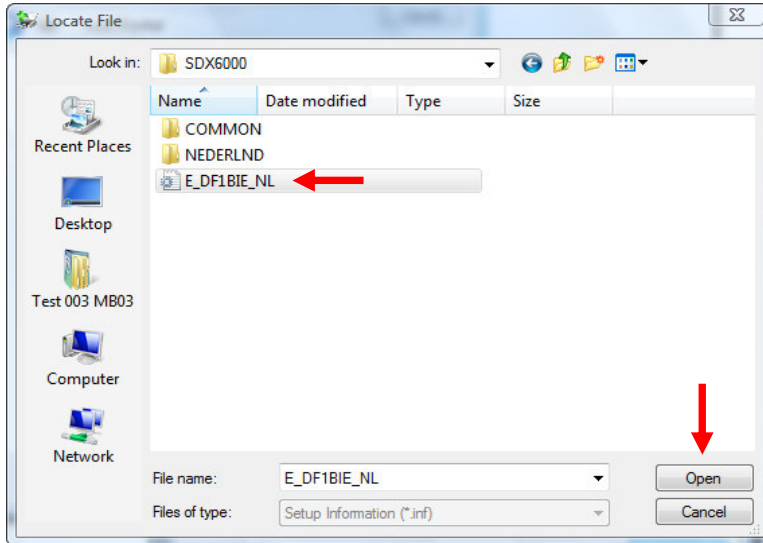


Note : If your printer is not listed, click on ‘Have Disk...’ and proceed with step 8 of this How To.

- 7.1. Insert the printer driver CD or click on ‘Browse’ and locate the appropriate directory with the correct driver.

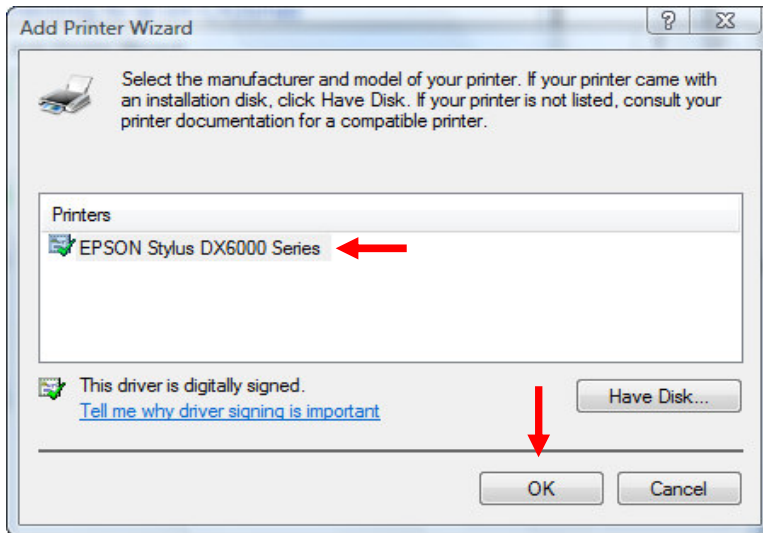


7.2. Select the appropriate driver file and click on 'Open' followed by clicking on 'OK'.

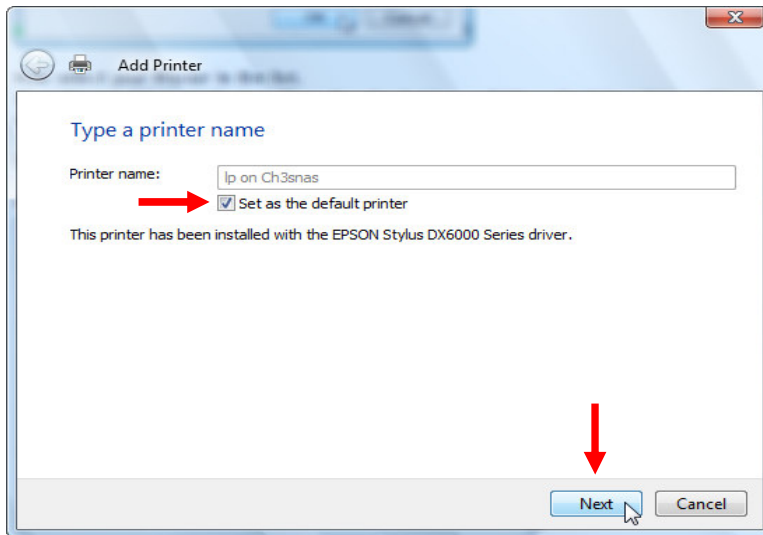


7.3 Select the printer you want to install and click 'OK'.

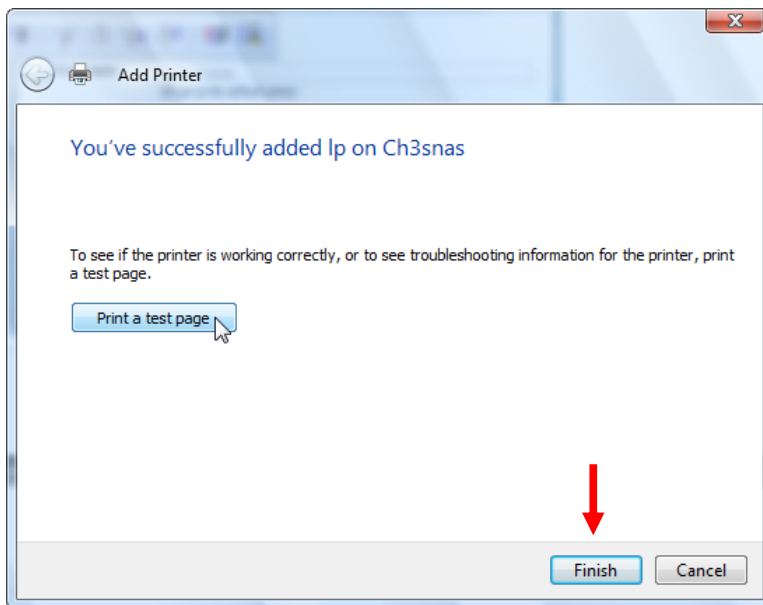
If your printer is not listed here, look for another printer driver.



7.4. The printer will now be installed. Select 'Set as the default printer' if you want the printer to be set as default and click on 'Next'.



8. Click on 'Print a test page' to check if the installation is successful.



9. Click on 'Finish' to complete the installation of your USB printer (which is attached to your CH3SNAS).

You can now start using your USB printer while it is attached to the CH3SNAS. Please note that the CH3SNAS has to be turned on in order for the printer to be used.