

How do I install a USB printer attached to my CH3SNAS in Windows XP?

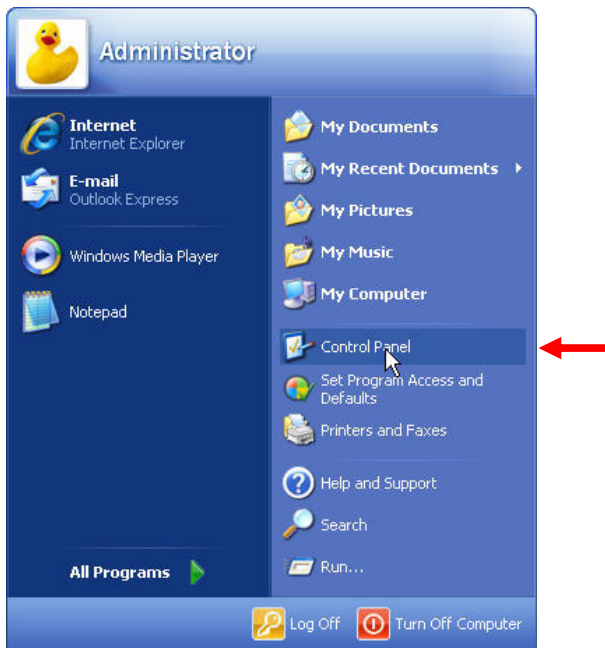
This how to document explains the installation of a USB printer attached to the Conceptronic CH3SNAS in Windows XP. If you are using another operating system, please refer to the FAQ on our website (www.conceptronic.net).

Note:

The print server inside the CH3SNAS is designed for single function printers. Therefore multifunctional printers are not supported. It is possible that the print function of your multifunctional printer works, however we cannot guarantee this.

It is not needed to change a setting in the configuration of the CH3SNAS to make use of the print server.

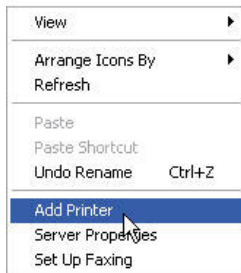
1. To start the installation procedure of your USB printer, click on 'Start' and select 'Control Panel'.



2. Double click on 'Printers and Faxes'.



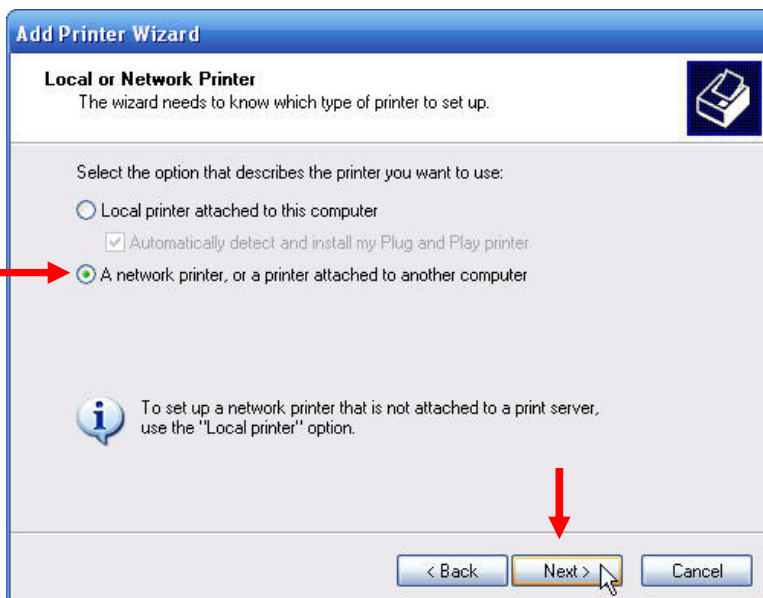
3. Right click in the middle of the window at an empty field and select 'Add Printer'.



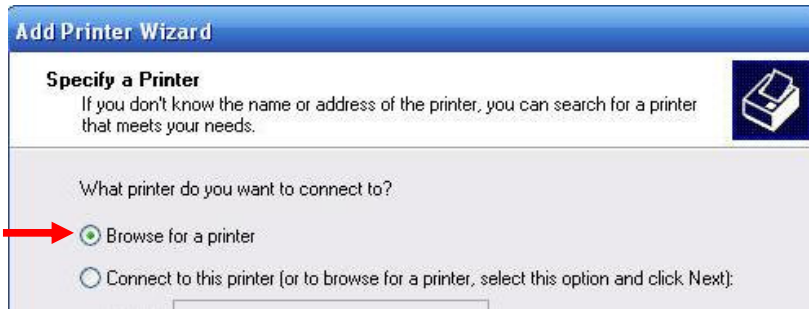
4. The Add Printer Wizard will now be started click on 'Next' to continue.



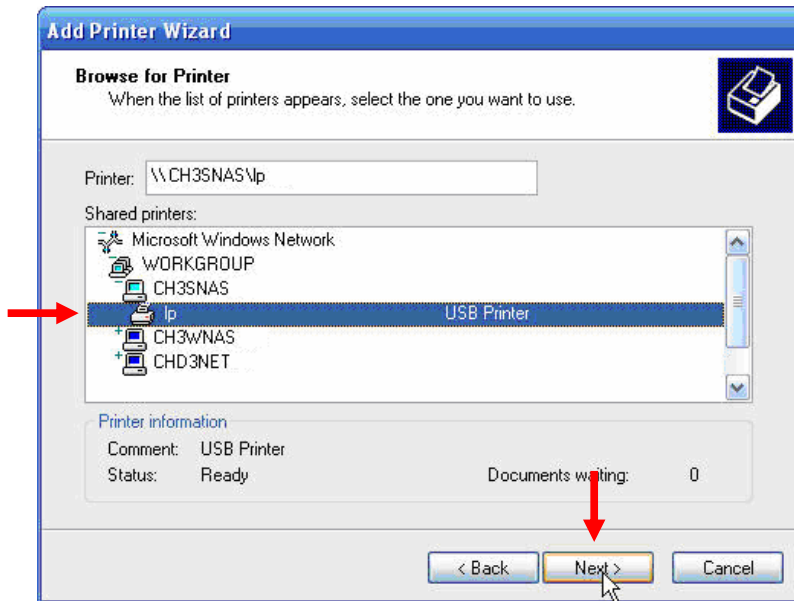
5. Select 'A Network printer, or a printer attached to another computer' and click on 'Next'.



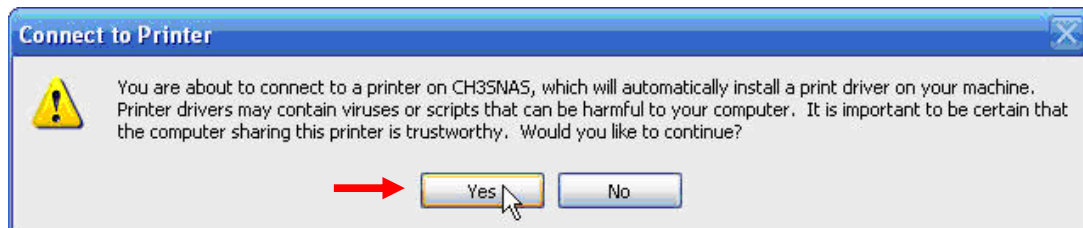
6. Select 'Browse for a printer' and click on 'Next'.



7. Browse to your CH3SNAS and select 'Ip' followed by clicking on 'Next'.



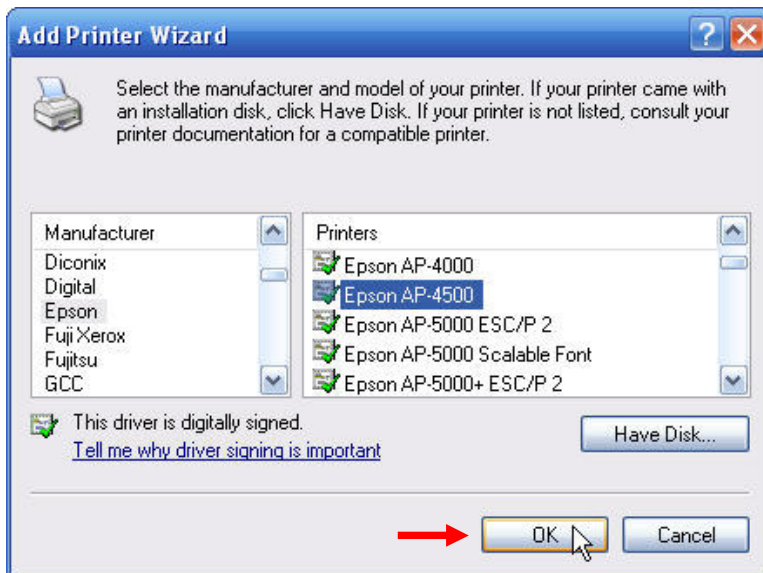
8. Click 'Yes' on next message Window which indicates you are trying to connect a printer attached to your CH3SNAS.



9. Click 'OK' on next message Window to search for a correct printer driver.

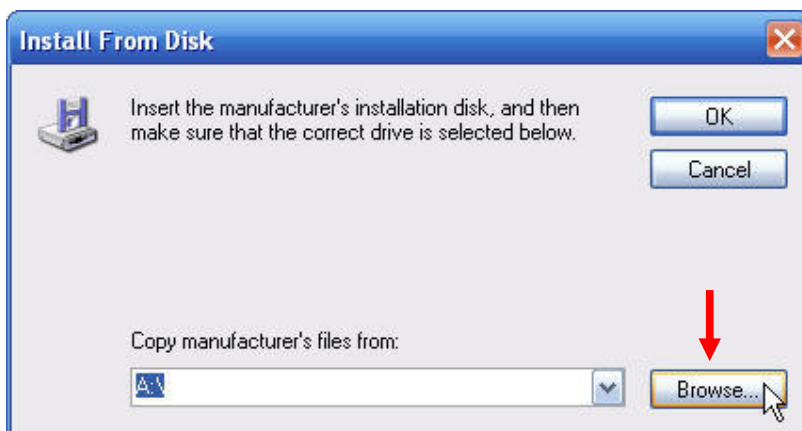


10. If your printer is listed, select it from the list and click 'OK'. Proceed with step 14 of this How To.

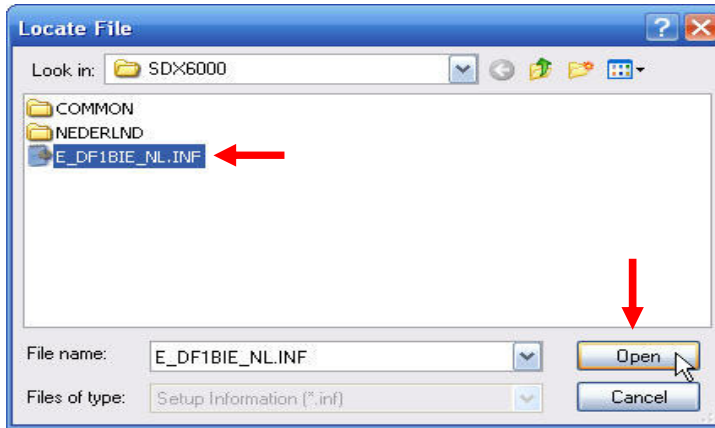


Note: If your printer is not listed, click on 'Have Disk...' and proceed with step 11 of this How To.

11. Insert the printer driver CD and click on 'Browse' and locate the appropriate directory with the correct driver.

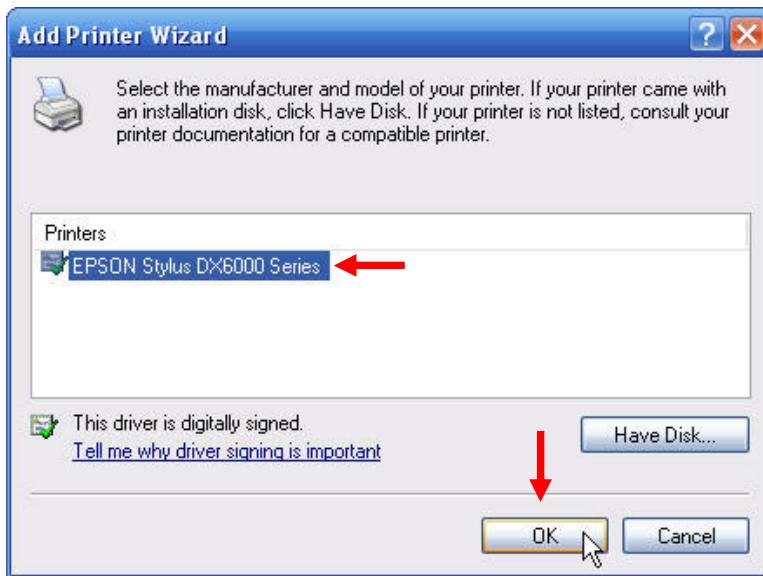


12. Select the appropriate driver file and click on 'Open' following by clicking on 'OK'.

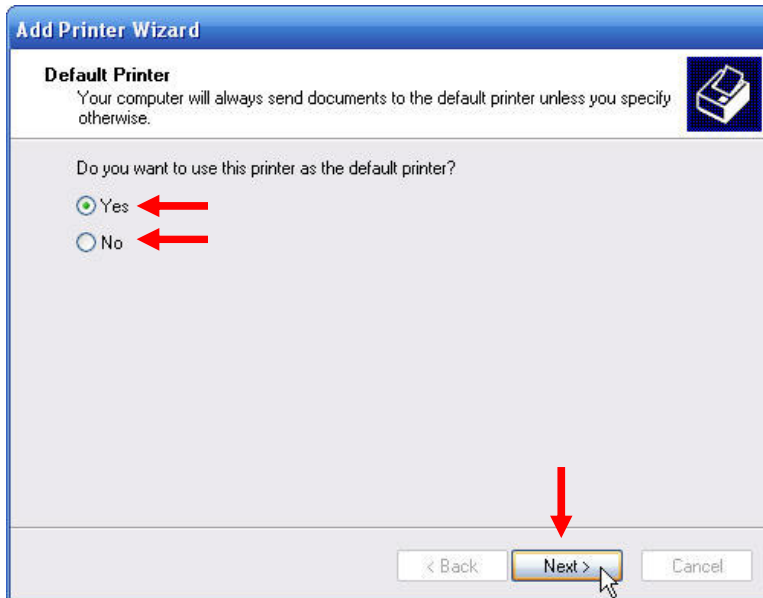


13. Select the printer you want to install and click 'OK'.

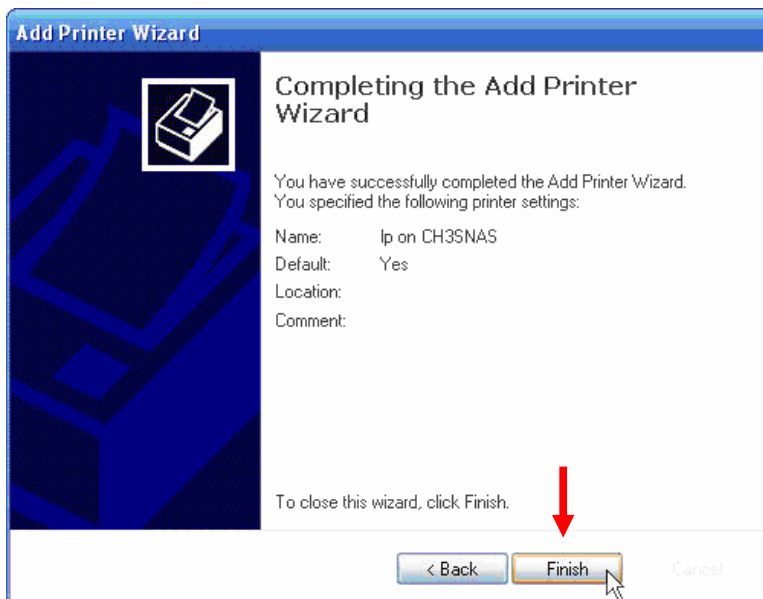
If your printer is not listed here, check with your printer manufacturer for the correct and latest drivers.



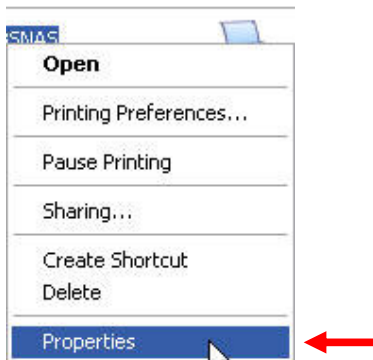
14. If you want this printer to be set as default then select 'Yes'. If not select 'No' followed by clicking on 'Next'.



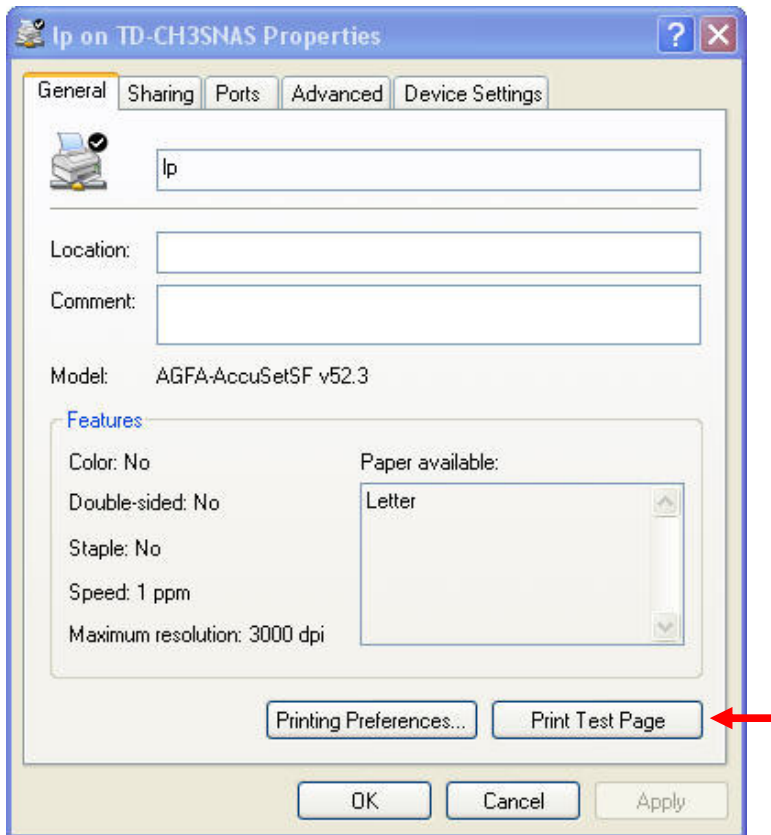
15. Click on 'Finish' to complete the installation of your USB printer (which is attached to your CH3SNAS).



16. Go back to Printers and Faxes.
17. Right click on your newly installed printer and select 'Properties'.



18. Click on 'Print Test Page' to check if your installation was successful.



You can now start using your USB printer while it is attached to the CH3SNAS. Please note that the CH3SNAS has to be turned on in order for the printer to be used.