

# System Requirements

- A personal computer with Pentium III 800 MHz or higher processor
- Microsoft Windows XP or above, or Windows 2000 with SP4
- Minimum 150 MB free hard disk space to run the program
- 256 MB of RAM or more
- A display card supporting 16-bit high color mode
- A CD-ROM drive
- A Bluetooth USB Adapter
- A Bluetooth headset, Mono or Stereo
- WMP (version 9.0, or above)
- Skype (version 1.4 or higher)


Note: Products and company names mentioned herein are the trademarks of their respective owners. All rights are reserved.

# Installing Software

**Note:** Before installing CAMagic iOdio, please make sure that the Bluetooth driver is installed on your computer, and the Bluetooth dongle is plugged into your computer properly.

To install CAMagic iOdio, please insert the CAMagic iOdio CD into the CD drive and follow the on-screen instructions to complete the installation.

# Main Menu

Right-click the CAMagic iOdio icon  on your PC task tray to open the main menu.



You can select the Audio Device for Default/Skype use, adjust the settings for the default/Skype audio devices, select headset, reconnect/disconnect your headset, enable/disable launch on startup, read Help to learn more about CAMagic iOdio utilities, check About to learn the detailed information about the version, or click Exit to quit.

Click on the option for the further operation.

# Default Audio Device

You can select the Audio Device for Default/Skype use, adjust the settings for the default/Skype audio devices, select headset, reconnect/disconnect your headset, enable/disable launch on startup, read Help to learn more about CAMagic iOdio utilities, check About to learn the detailed information about the version, or click Exit to quit.

Click on the option for the further operation.



Click on **Default Audio Device** to select the audio device you'd like to use for Windows audio applications, such as Media Player.

1. **System Audio Device:** use the system audio device for Windows audio applications.
2. **Bluetooth Mono Headset:** use Bluetooth mono headset for Windows audio applications.
3. **Bluetooth Stereo Headset:** use Bluetooth stereo headset for Windows audio applications.

For advanced settings, please go to **Advance Settings**.

**Note 1:** Your choice will correspond to the Advance Settings. For example, if you choose to use Bluetooth headset here, the option in Advance Settings will automatically switch to Use Bluetooth Audio Device, and vice versa.

**Note 2:** When you switch the audio device to or between Bluetooth headsets, CAMagic iOdio will connect your headset device automatically.

# Skype Audio Device

There are two options available for Skype Audio Device: System Audio Device and Bluetooth Mono Headset.



Click on **Skype Audio Device** to select the audio device you'd like to use for Skype.

1. **System Audio Device**: use the system audio device for Skype.
2. **Bluetooth Mono Headset**: use Bluetooth mono headset for Skype.

For advanced settings, please go to **Advance Settings**.

**Note 1:** Your choice will correspond to the Advance Settings. For example, if you choose to use Bluetooth headset here, the option in Advance Settings will automatically switch to Use Bluetooth Audio Device, and vice versa.

**Note 2:** When you switch the audio device to Bluetooth headset, CAMagic iOdio will connect your headset device automatically.

# Advance Settings

Click **Advance Settings** on the main menu to switch the audio device you'd like to use, or to make the advanced settings.

The device choice you make here will correspond to the Default/Skype Audio Device setting in the main menu.

For example, if you choose to use Bluetooth audio device here, the option in Default/Skype Audio Device will automatically switch to Bluetooth Headset, and vice versa.



For Default Audio Device, you can select an audio device you'd like to use by checking **Use other audio device** or **Use Bluetooth audio device**. Furthermore, you can select the output and input devices as well.

For Skype Audio Device, you can select an audio device you'd like to use by checking **Use other audio device** or **Use Bluetooth audio device**. Furthermore, you can select the output and input devices as well.

If you'd like to use your Bluetooth headset, please make sure you've checked **Use Bluetooth audio device**.

Click **OK** after you're done with the settings.


**Note:** By switching the audio device to **Use Bluetooth Audio Device**, CAMagic iOdio will automatically connect your disconnected headset.

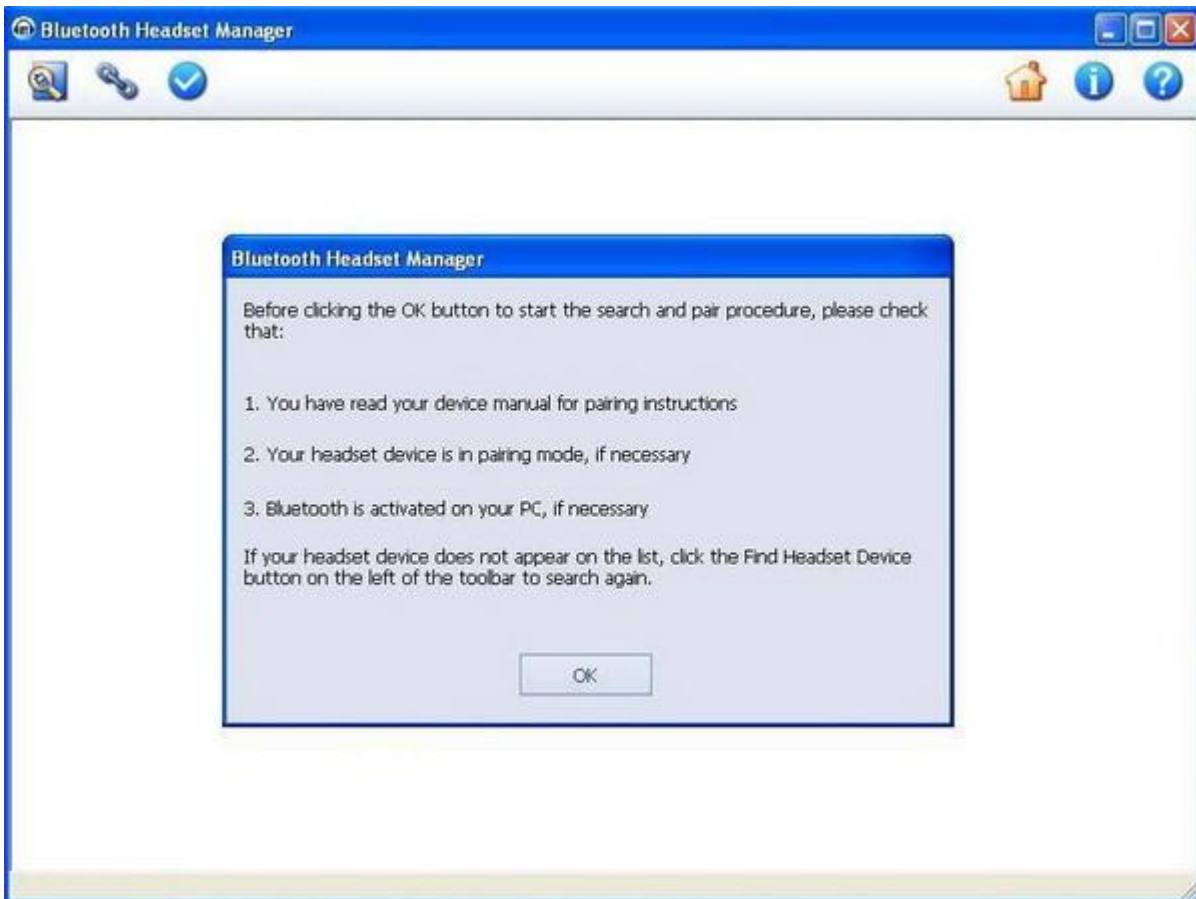
# Select Headset

If you want to use a different headset, click **Select Headset** on the main menu to open the Bluetooth Headset Manager.


**Note:** By clicking on **Select Headset**, you disconnect the headset you've connected as well. Before moving on to the next step, make sure:

1. The Bluetooth dongle is plugged properly into your PC.
2. Your Bluetooth headset is turned on and set in the mode to enable a Bluetooth connection. (The procedure for operating the headset may vary according to the manufacturer and model. Please refer to the headset user's guide for a detailed description of how to operate the unit.)
3. If you'd like to use CAMagic iOdio to help manage the audio device for Skype, install Skype (version 1.4 or higher) on your computer first.


Step 1. Click **OK**, it will start searching the available headsets. If you don't see the headset model you want to use, click **Searching Headset Device**  to search again.

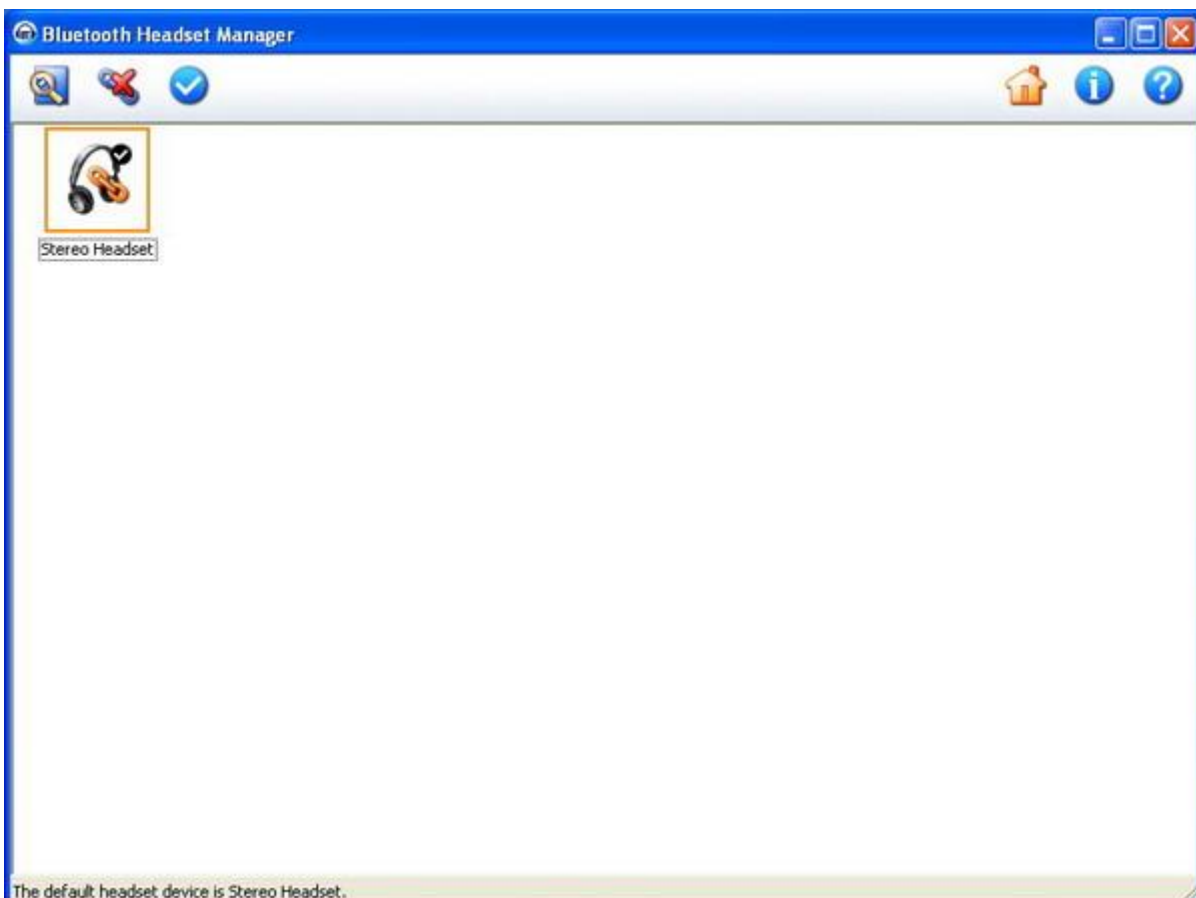




Step 2. Select the headset model you'd like to use and click **Pair Headset Device**  in the Tool Bar. To begin the pairing process, enter your headset default PIN Code then click **Pair**. (To locate the PIN Code, please refer to your headset documentation.)




Step 3. Double-click the paired headset device icon or click **Set Device as Default**  in the Tool Bar.

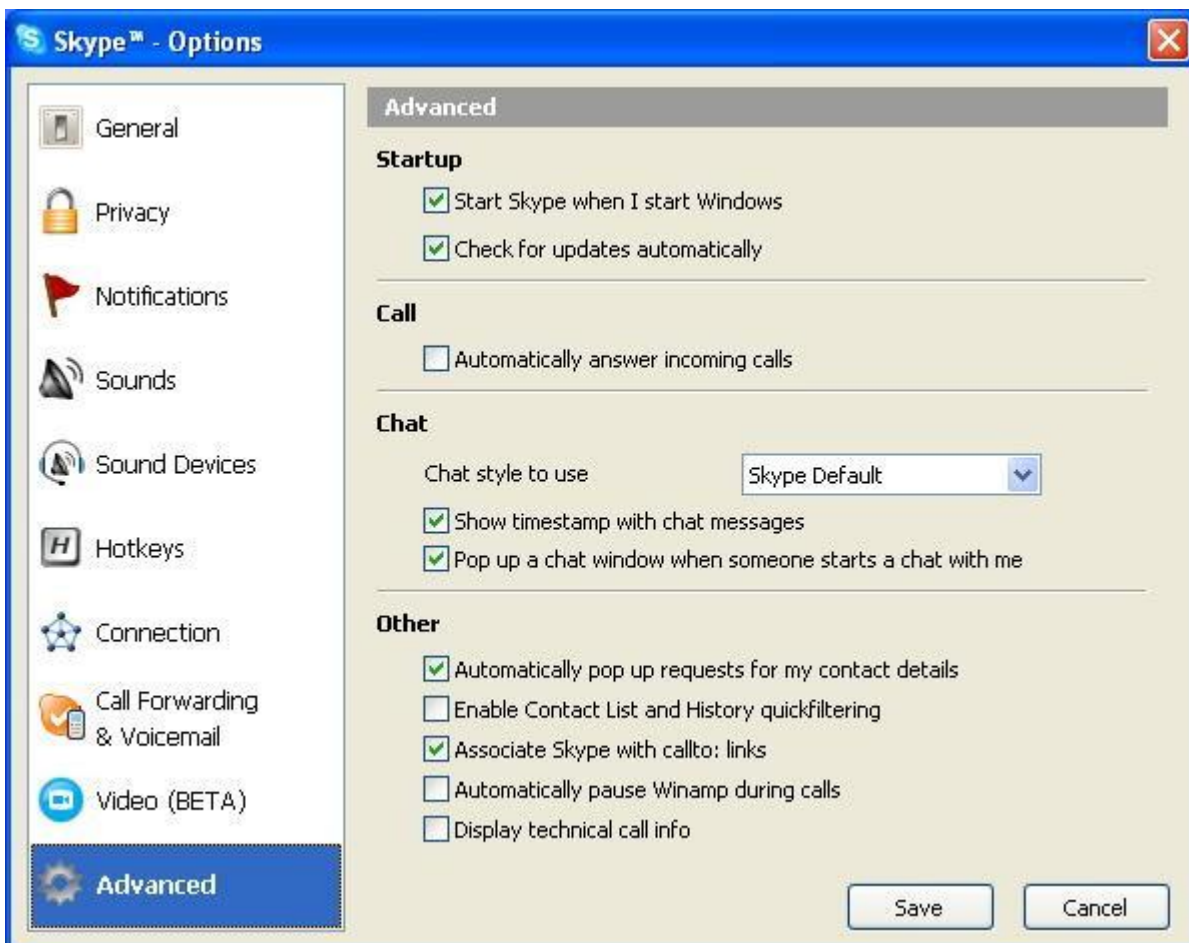


Step 4. Now the setting for default headset device has completed. Exit Bluetooth Headset Manager, the window for Skype will appear. Select **Allow this program to use Skype** or **Allow this program to use Skype, but ask again in the future**, then click OK.



Step 5. Next, CAMagic iOdio will automatically connect your headset device, please wait for a moment. When your headset device is connected, you can right-click the CAMagic iOdio icon  on your PC task tray to open the main menu and start using CAMagic iOdio.

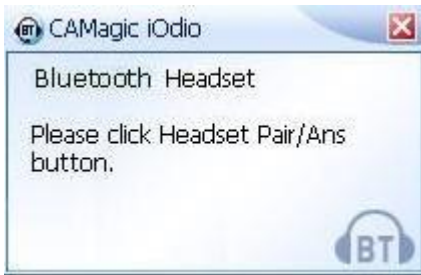
**Note:** Please open Skype, go to Tools-Options-Advanced, make sure the option for **Call(Automatically answer incoming calls)** is unchecked, to ensure CAMagic iOdio working properly.



## Reconnect Headset

Click **Reconnect** to connect your disconnected headset.

If you're using a Bluetooth mono headset, the following dialog box will appear, you can also hear the indicate tones from your headset. Click the Pair/Ans button of your headset, wait for CAMagic iOdio connecting your headset.



## Disconnect Headset

Click **Disconnect** on the main menu to disconnect your headset connection. Whenever you want to get connection with your Bluetooth headset again, just click **Reconnect** on the main menu (See the Reconnect section for more details).

# Launch on startup



You can choose to enable or disable the function of launching CAMagic iOdio application from the Start menu by clicking on Enable or Disable.

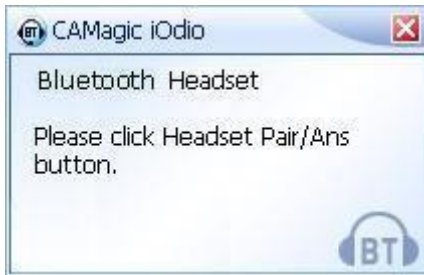
# Using Bluetooth Headset

To use your Bluetooth headset, you need to pair and establish a connection to your headset.

For a new headset: See **Select Headset** section for the pairing and connecting procedure.

For a paired headset:

1. Bluetooth stereo headset: click **Reconnect** on the main menu, CAMagic iOdio will connect your headset automatically.
2. Bluetooth mono headset: click **Reconnect** on the main menu, the following dialog box will appear, you can also hear the indicate tones from your headset.



Press the Pair/Ans button of your headset, wait for CAMagic iOdio connecting your headset.

When the Bluetooth headset is connected, it is ready for use, you can go back to main menu to operate the CAMagic iOdio application.

# Working with Skype

To work with Skype, first make sure you have Skype(version 1.4 or higher) installed on your computer already.

After you've 1. launched the CAMagic iOdio application, or 2. established a connection with your Bluetooth headset, the following window will appear. Select **Allow this program to use Skype** or **Allow this program to use Skype, but ask again in the future**, then click **OK**.

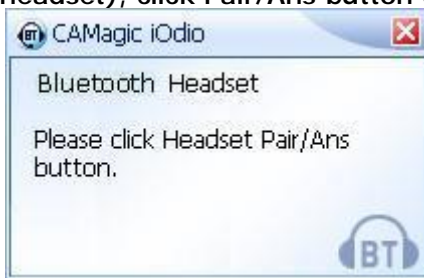


## For making Skype outgoing calls:

1. If you are listening to music on the media player, the media player will pause once you start making Skype outgoing calls.

For using Bluetooth stereo headset, CAMagic iOdio will temporarily switch your headset to the mono mode, then redial for you.

When the following dialog box appears, (you can also hear the indicate tones from your headset), click Pair/Ans button of your headset, then you'll be able to start talking.



2. After you hang up the phone, CAMagic iOdio will resume the music playing automatically.

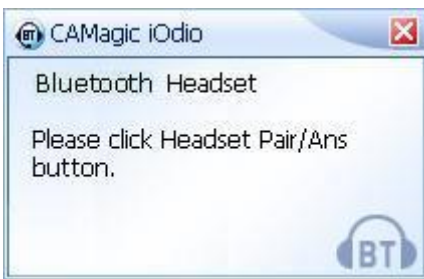
## For answering Skype incoming calls:

1. The media player will pause for the ring of an incoming Skype call.

2. For System Audio Device and Bluetooth Mono Headset: After a short ring, the call will be answered automatically and you can start talking.

For Bluetooth Stereo Headset: Do not respond to Skype pop-up dialog box for answering the call. Wait for CAMagic iOdio temporarily switching your headset to the mono mode for answering the call.

When the following dialog box appears, (you can also hear the indicate tones from your headset), click Pair/Ans button of your headset, then you'll be able to start talking.



3. After the call is finished, CAMagic iOdio will resume the music playing automatically. If your headset was in stereo mode before you answered the call, CAMagic iOdio now will automatically switch the mono mode back to stereo mode.



# Troubleshooting

## Installing CAMagic iOdio

1. Q: Why can't I establish a connection to my Bluetooth headset?

A: 1. Check and see if the dongle is plugged into your computer properly.

2. Make sure the Bluetooth headset is turned on and the mode is set to enable a Bluetooth connection.

(The procedure for operating the headset may vary according to the manufacturer and model.

Please refer to the headset user's guide for a detailed description of how to operate the unit.)

3. If your Bluetooth headset is already selected and set as the default connection headset, unpair it first, then try to make a connection again.

2. Q: Why can't CAMagic iOdio find my Bluetooth headset when I try to make a connection?

A: If your Bluetooth headset is connected to and being used by another device, it will be undetectable even if you search for it.


Please unpair your Bluetooth headset with other device first, then retry to make a connection.

3. Q: After the connection is established successfully, how can I start using my Bluetooth headset?

A: Right-click the CAMagic iOdio icon on your PC task tray, make sure you've selected the correct Bluetooth audio device, then you should be able to start using your Bluetooth headset.

## Using CAMagic iOdio

1. Q: What do the different colors of the CAMagic iOdio icon on the PC task tray mean?

A:  CAMagic iOdio dongle is not found; or CAMagic iOdio dongle is ready, but your headset is not connected.

 The Bluetooth headset is connected. You can start using it now.

2. Q: Can I switch the audio device while my Bluetooth headset is connected?

A: Yes, you can. When you switch the audio device to or between Bluetooth headsets, CAMagic iOdio will connect your headset device automatically.

## Using Skype

1. Q: When I'm using the Bluetooth headset to listen to music playing by the audio application on my computer, how can I answer/make the Skype calls?

A: For making/answering Skype calls, CAMagic iOdio will manage the audio device switch automatically. Just follow the pop-up dialog boxes of CAMagic iOdio, or check **Working with Skype** section for the further details.

2. Q: What can I do when I want to play music again after my Skype calls?

A: CAMagic iOdio will pause the media player applications while you make/take the Skype calls; after you have finished with Skype, it will resume the music playing automatically.