

**NEDERLANDS**

Conceptronic CLLSPK20P

## **Handleiding**

### **Gefeliciteerd met de aanschaf van uw Conceptronic Portable USB Tube Speakers.**

In deze handleiding wordt stap voor stap uitgelegd hoe u de Conceptronic Portable USB Tube Speakers kunt gebruiken.

In geval van problemen adviseren wij u onze **support-site** te bezoeken (ga naar: [www.conceptronic.net](http://www.conceptronic.net) en klik op 'Support'). Hier vindt u een database met veelgestelde vragen waar u waarschijnlijk de oplossing voor uw probleem kunt vinden.

Heeft u andere vragen over uw product die u niet op de website kunt vinden, neem dan contact met ons op via e-mail: [support@conceptronic.net](mailto:support@conceptronic.net).

Voor meer informatie over Conceptronic producten kunt u terecht op de Conceptronic website: [www.conceptronic.net](http://www.conceptronic.net).

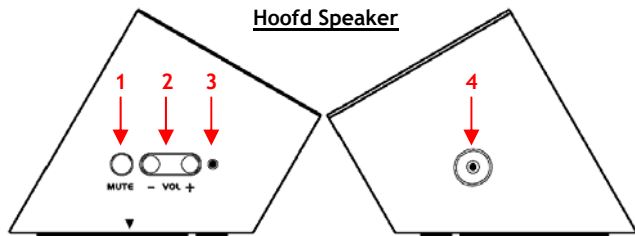
#### **1. Inhoud van de verpakking**

De volgende onderdelen dienen aanwezig te zijn in de verpakking van de Conceptronic Portable USB Tube Speakers:

- Conceptronic Portable USB Tube Speakers
- Deze Meertalige Handleiding
- Garantiekaart

# NEDERLANDS

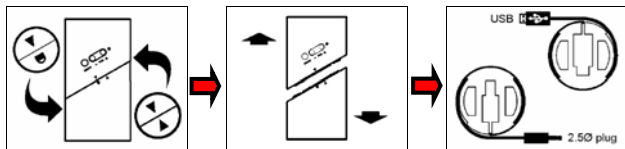
## 2. De Portable USB Tube Speakers uitgelegd



| Nr | Beschrijving                                       |
|----|--|
| 1  | Mute knop  |
| 2  | Volume Verhogen/Verlagen knop                      |
| 3  | Power indicatie LED                                |
| 4  | Geluidsuitgang naar 2e speaker (2,5mm aansluiting) |

## 3. De Tube Speakers gebruiken

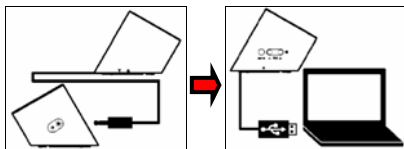
- A. Draai de speakers tegen de klok in om de 2 speakers van elkaar los te halen.



- B. Haal de kabels uit de onderkant van beide speakers.

## NEDERLANDS

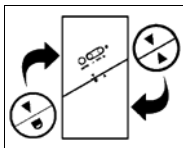
- C. Sluit de 2e speaker met de 2,5mm aansluiting aan op de hoofdspeaker.



- D. Sluit de USB connector aan op een vrije USB poort van uw computer/notebook.

De computer zal de USB Tube Speakers automatisch detecteren en installeren en zal deze als standaard afspeelapparaat instellen.

U kunt de speakers opbergen door de kabels los te koppelen en deze op te rollen aan de onderkant van elke speaker. Plaats vervolgens de 2 speakers bovenop elkaar en draai deze met de klok mee om de speakers aan elkaar te vergrendelen.



***Veel plezier met het gebruik van uw  
Portable USB Tube Speakers!***

**ENGLISH**

Conceptronic CLLSPK20P  
**User Guide**

**Congratulations on the purchase of your  
Conceptronic Portable USB Tube Speakers.**

This User Guide gives you a step-by-step explanation of how to use the Conceptronic Portable USB Tube Speakers.

When problems occur, we advise you to go to our **support-site** (go to [www.conceptronic.net](http://www.conceptronic.net) and click 'Support'. Here you will find the Frequently Asked Questions Database.

When you have other questions about your product and you cannot find it at our website, contact us by e-mail: [support@conceptronic.net](mailto:support@conceptronic.net)

For more information about Conceptronic products, please visit the Conceptronic Web Site: [www.conceptronic.net](http://www.conceptronic.net)

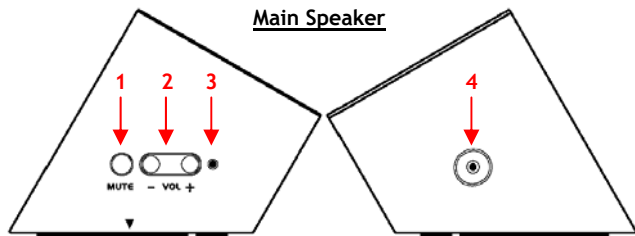
## **1. Package Contents**

The following items are present in the package of the Conceptronic Portable USB Tube Speakers:

- Conceptronic Portable USB Tube Speakers
- Multi Language User Guide
- Warranty Card

# ENGLISH

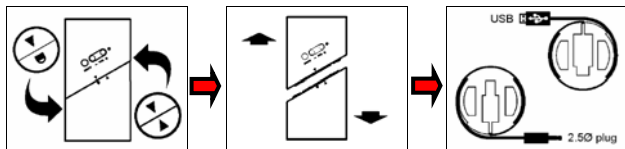
## 2. The Portable USB Tube Speakers Explained



| Nr | Description                                 |
|----|---|
| 1  | Mute Button                                 |
| 2  | Volume Up/Down Button                       |
| 3  | Power LED                                   |
| 4  | Audio Output to second speaker (2,5mm Jack) |

## 3. How to use the Tube Speakers

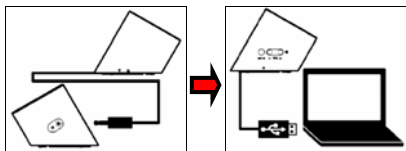
- A. Rotate the speakers counter-clockwise to separate the 2 speakers from each other.



- B. Take out the cables from both speakers.

## ENGLISH

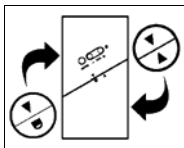
- C. Connect the second speaker with the 2,5mm Jack to the main speaker.



- D. Connect the USB connector to a free USB port on your computer/notebook.

The computer will recognize and install the USB Tube Speakers automatically and switches the default playback device to the USB Tube Speakers.

You can store the speakers by disconnecting them from your computer and roll the cables back on the bottom of each speaker. Put both speakers on each other and rotate them clockwise to fasten them.



***Enjoy the use of your Portable USB Tube Speakers!***

# Declaration of CE Conformity

**The manufacturer** 2L International BV  
**Address** Databankweg 7  
3821 AL Amersfoort, the Netherlands

**Hereby declares that the product**  
**Type** PORTABLE USB TUBE SPEAKERS 2.0  
**Product** CLLSPK20P  
**Brandname** Conceptronic

## Complies with following directives:

- 2004/108/EEC EMC directive:  
Electromagnetic Compatibility
- 73/23/EEC Low Voltage Directive:  
Electrical equipment designed for use  
within certain voltage limits

## The following standards were consulted to assess conformity:

- EN55022/9.98 Class B
- EN55024/9.98
- EN 50081-1/1994
- EN 61000-3-2/3/4/1995
- EN 50082-1/1994
- EN 60950/1995

The symbol confirms that this product conforms to the above named standards and regulations.



Place and date of issue: Amersfoort, 03/07/2007 (dd/mm/yyyy)

A handwritten signature in blue ink, appearing to be 'Herman Looijen', written over a faint dotted grid background.

Herman Looijen, Product Marketing Manager

# ESPAÑOL

CLLSPK20P de Conceptronic

## Guía de usuario

### Felicidades por la compra de sus altavoces portátiles USB Tube de Conceptronic.

Esta guía de instalación le orientará paso a paso sobre cómo instalar de sus altavoces portátiles USB Tube de Conceptronic.

Si encuentra problemas, le aconsejamos que se dirija a nuestra página web [www.conceptronic.net](http://www.conceptronic.net) y haga clic en «Support». Aquí encontrará la base de datos de las preguntas más frecuentes o FAQ.

Si tiene otras preguntas sobre su producto y no las encuentra en nuestro sitio web, póngase en contacto con nuestro servicio técnico por correo electrónico:

[apoyo@conceptronic.net](mailto:apoyo@conceptronic.net)

Para obtener más información acerca de productos de Conceptronic por favor visite el lugar Web de Conceptronic: [www.conceptronic.net](http://www.conceptronic.net)

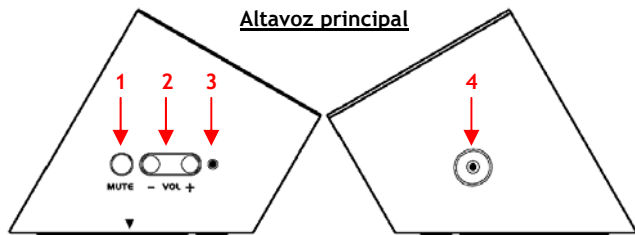
## 1. Contenido del paquete

El paquete de los altavoces portátiles USB Tube de Conceptronic contiene los elementos siguientes:

- Altavoces portátiles USB Tube de Conceptronic
- Guía de usuario en varios idiomas
- Tarjeta de garantía

# ESPAÑOL

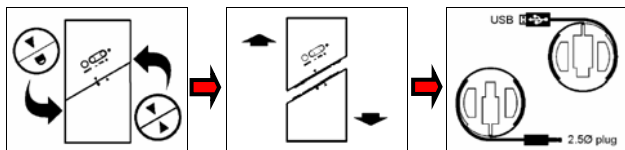
## 2. Descripción de los altavoces portátiles USB Tube de Conceptronic:



| Núm. | Descripción  |
|------|--|
| 1    | Botón de Mute (Silencio)   |
| 2    | Botón para subir o bajar el volumen                              |
| 3    | LED de funcionamiento  |
| 4    | Salida de audio para el segundo altavoz (conector Jack de 2,5mm) |

## 3. Utilización de los altavoces Tube

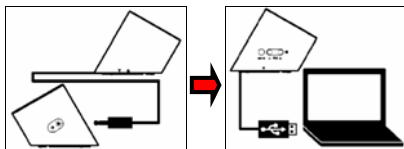
- A. Para separar los altavoces, gírelos en sentido contrario a las agujas del reloj.



- B. Desenrolle los cables de los dos altavoces.

## ESPAÑOL

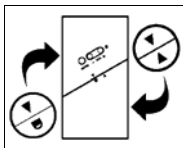
- C. Conecte el segundo altavoz al altavoz principal con el conector Jack de 2,5mm.



- D. Conecte el conector USB a un puerto USB libre de su ordenador o portátil.

El sistema reconocerá e instalará automáticamente los altavoces USB Tube y los utilizará como dispositivos de audio predeterminados.

Para volver a guardar los altavoces, primero desconéctelos del ordenador y enrolle los cables a la base de cada altavoz. Luego, póngalos uno contra otro y hágalos girar en sentido horario para que queden sujetos.



***¡Disfrute de los altavoces portátiles USB Tube!***

## Declaración de Conformidad

**El fabricante** 2L Internacional BV  
**Dirección:** Databankweg 7  
3821 AL Amersfoort, Países Bajos, tel. +31 (0)33  
4549401  
CIF/NIF NL801729877B01

**Declara mediante este documento que el producto**  
**Tipo** PORTABLE USB TUBE SPEAKERS 2.0  
**Producto** CLLSPK20P  
**Marca** Conceptronic

### Cumple con las siguientes directivas:

- Directiva EMC 2004/108/CE EMC  
Directiva 2004/108/EEC EMC (transpuesta a la legislación española mediante RD 1580/2006: Compatibilidad electromagnética.
- Directiva 73/23/EEC Directiva sobre bajo voltaje ((transpuesta a la legislación española mediante RD 7/1998):  
Material eléctrico destinado a utilizarse con determinados límites de tensión

Este producto ha sido diseñado para su uso sólo en interiores.



La marca CE certifica que este producto se adecua a las especificaciones y regulaciones arriba mencionadas.

Este producto es adecuado para todos los países de la UE.

Lugar y fecha de emisión: Amersfoort, 03/07/2007 (dd/mm/yy)

A handwritten signature in blue ink, appearing to be 'Herman Looijen', is written over a faint, illegible stamp or background.

Herman Looijen, Director de marketing

# DEUTSCH

## Conceptronic CLLSPK20P Bedienungsanleitung

**Wir gratulieren Ihnen zum Kauf Ihrer tragbaren USB-Röhrenlautsprecher von Conceptronic.**

In beiliegender Hardware-Installationsanleitung wird Ihnen Schritt für Schritt gezeigt, wie das USB-Röhrenlautsprecher von Conceptronic installiert werden muss.

Wenn Probleme auftreten sollten, besuchen Sie unsere **Support-Seite** (unter [www.conceptronic.net](http://www.conceptronic.net)) und klicken Sie auf ‚Support‘. Dort steht Ihnen unsere FAQ-Datenbank mit den häufig gestellten Fragen zur Verfügung.

Wenn Sie weitere Fragen zu Ihrem Produkt haben, die Sie auf unserer Webseite nicht beantworten können, kontaktieren Sie uns per E-Mail: [support@conceptronic.net](mailto:support@conceptronic.net)

Detaillierte Informationen über Conceptronic Produkte finden Sie auf unserer Webseite: [www.conceptronic.net](http://www.conceptronic.net)

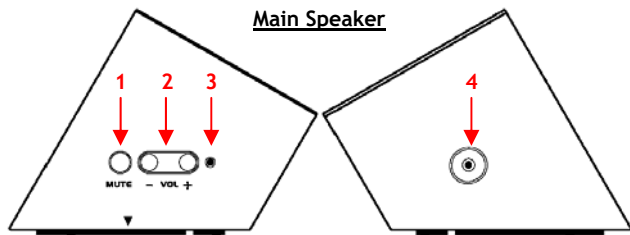
### 1. Packungsinhalt

In der Verpackung der tragbaren USB-Röhrenlautsprecher von Conceptronic ist Folgendes enthalten:

- Tragbare USB-Röhrenlautsprecher von Conceptronic
- Mehrsprachige Bedienungsanleitung
- Garantiekarte

# DEUTSCH

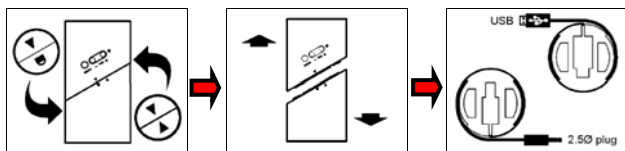
## 2. Erläuterungen zu den tragbaren USB-Röhrenlautsprechern



| Nr. | Beschreibung  |
|-----|---|
| 1   | Stummschalttaste                                    |
| 2   | Taste zum Erhöhen/Reduzieren der Lautstärke         |
| 3   | Power LED-Anzeige                                   |
| 4   | Audioausgabe an zweiten Lautsprecher (2,5mm-Buchse) |

## 3. Verwendung der Röhrenlautsprecher

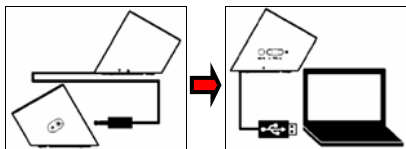
- A. Drehen Sie die Lautsprecher im Gegenuhrzeigersinn, um die beiden Lautsprecher voneinander zu trennen.



- B. Nehmen Sie die Kabel aus beiden Lautsprechern heraus.

## DEUTSCH

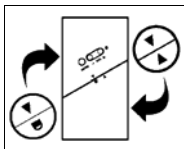
- C. Stecken Sie den 2,5mm-Stecker des zweiten Lautsprechers im Hauptlautsprecher ein.



- D. Stecken Sie den USB-Stecker in einem freien USB-Port Ihres Computers/Notebooks ein.

Der Computer erkennt und installiert die USB-Röhrenlautsprecher automatisch und stellt das Standardwiedergabegerät auf die USB-Röhrenlautsprecher um.

Wenn Sie die Lautsprecher nicht verwenden und aufbewahren möchten, können Sie diese von Ihrem Computer trennen und die Kabel wieder in die Unterseite der beiden Lautsprecher einrollen. Legen Sie dann beide Lautsprecher aufeinander und drehen Sie diese im Uhrzeigersinn, um sie aneinander zu befestigen.



***Viel Spaß mit Ihren tragbaren USB-Röhrenlautsprechern!***

## CE - Konformitätserklärung

**Der Hersteller** 2L International BV  
**Adresse** Databankweg 7  
3821 AL Amersfoort, Niederlande

**erklärt hiermit, dass das Produkt**  
**Typ** PORTABLE USB TUBE SPEAKERS 2.0  
**Produkt** CLLSPK20P  
**Markenname** Conceptronic

**den folgenden Richtlinien entspricht:**

- 2004/108/EWG EMV-Richtlinie:  
Elektromagnetische Verträglichkeit
- 73/23/EWG Niederspannungs-Richtlinie  
Elektrische Betriebsmittel zur Verwendung  
innerhalb bestimmter Spannungsgrenzen

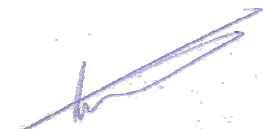
**Für die Beurteilung der Einhaltung der Konformität angewandte Normen:**

- EN55022/9.98 Klasse B
- EN55024/9.98
- EN 50081-1/1994
- EN 61000-3-2/3/4/1995
- EN 50082-1/1994
- EN 60950/1995

Das Zeichen bestätigt, dass dieses Produkt oben aufgeführte Normen und Bestimmungen erfüllt.

**CE**

Ort und Datum der Ausstellung: Amersfoort, 03/07/2007 (dd/mm/yyyy)



Herman Looijen, Product Marketing Manager

# FRANÇAIS

## CLLSPK20P de Conceptronic Guide d'Utilisation

### Félicitations pour l'achat de vos Haut-parleurs USB Portables Tube de Conceptronic.

Le guide d'installation du matériel ci-joint vous explique pas à pas comment installer vos Haut-parleurs USB Portables Tube de Conceptronic.

En cas de problèmes, nous vous recommandons de vous adresser à notre **service technique** (allez à [www.conceptronic.net](http://www.conceptronic.net) et cliquez sur « support »). Vous trouverez dans cette section la Base de Données des Foires Aux Questions.

Si vous avez d'autres questions concernant votre produit et que vous ne trouvez pas la solution sur notre site web, contactez-nous par e-mail : [support@conceptronic.net](mailto:support@conceptronic.net)

Pour plus d'informations sur les produits de Conceptronic, visitez notre Site Internet Conceptronic: [www.conceptronic.net](http://www.conceptronic.net)

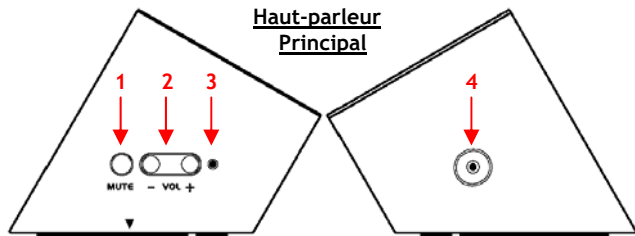
## 1. Contenu du Coffret

Vous trouverez les éléments suivants dans le Coffret des Haut-parleurs USB Portables *Tube* de Conceptronic:

- Haut-parleurs USB Portables *Tube* de Conceptronic
- Guide de l'utilisateur en plusieurs langues
- Livret de Garantie

# FRANÇAIS

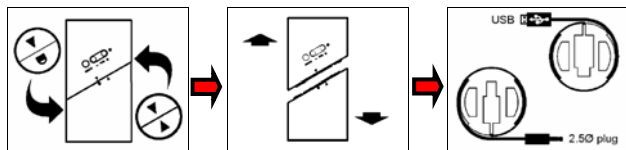
## 2. Les Haut-parleurs USB Portables *Tube* Expliqués



| No | Description   |
|----|---|
| 1  | Bouton « Silence » ( <i>Mute</i> )                                  |
| 2  | Bouton Volume +/-   |
| 3  | Témoin d'alimentation   |
| 4  | Sortie Audio vers le deuxième haut-parleur (Connecteur Jack 2,5 mm) |

## 3. Comment utiliser les Haut-parleurs *Tube*?

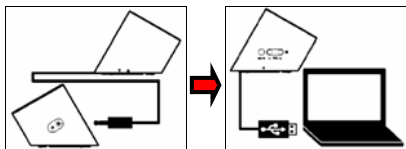
- A. Tourner les haut-parleurs dans le sens inverse des aiguilles d'une montre pour séparer les 2 haut-parleurs.



- B. Déroulez les câbles des deux haut-parleurs.

## FRANÇAIS

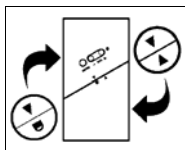
- C. Branchez le deuxième haut-parleur au haut-parleur principal à l'aide du Connecteur Jack 2,5 mm.



- D. Branchez le connecteur USB à un port USB libre de votre ordinateur portable/de bureau.

L'ordinateur détectera et installera automatiquement les Haut-parleurs USB Portables *Tube* et le périphérique de sortie audio défini par défaut sera alors remplacé par les Haut-parleurs USB *Tube*.

Vous pouvez ranger les haut-parleurs en les débranchant de votre ordinateur et en enroulant les câbles autour du socle de chacun des haut-parleurs. Empilez les haut-parleurs l'un sur l'autre et tournez-les dans le sens des aiguilles d'une montre de façon à bien les attacher.



***Amusez-vous bien avec vos Haut-parleurs USB Portables Tube!***

# Déclaration de Conformité CE

**Le fabricant** 2L International BV  
**Adresse** Databankweg 7  
3821 AL Amersfoort, the Netherlands (Pays-Bas)

**Déclare, par la présente, que le produit**

**Type** PORTABLE USB TUBE SPEAKERS 2.0  
**Produit** CLLSPK20P  
**Enseigne** Conceptronic

**Observe les directives suivantes:**

- 2004/108/EECDirective EMC relative à la: Compatibilité Électromagnétique (*Electromagnetic Compatibility*)
- 73/23/EEC Directive Basse Tension (*Low Voltage Directive*) relative aux: Équipements Électriques conçus pour un usage dans certaines limites de tension

**Les normes suivantes ont été considérées pour en déterminer la bonne conformité:**

- EN55022/9.98 Catégorie B
- EN55024/9.98
- EN 50081-1/1994
- EN 61000-3-2/3/4/1995
- EN 50082-1/1994
- EN 60950/1995

L'apposition du marquage garantit la conformité de ce produit aux normes et à la réglementation susmentionnées.



Lieu et date de publication: Amersfoort, 03/07/2007 (dd/mm/yyyy)

A handwritten signature in blue ink, appearing to be 'Herman Looijen', written over a horizontal line.

Herman Looijen, Responsable Marketing Produit

**ITALIANO**

Conceptronic CLLSPK20P  
**Manuale dell'utente**

**Vi ringraziamo per aver acquistato  
gli Speaker Tubolari Portatili USB di Conceptronic.**

La presente guida per l'installazione dell'hardware spiega come installare passo a passo gli Speaker Tubolari Portatili USB di Conceptronic.

Se dovessero esserci dei problemi, vi consigliamo di visitare il nostro sito di supporto (andate su [www.conceptronic.net](http://www.conceptronic.net) e cliccate 'support'), dove potrete trovare il Database delle Risposte alle Domande più Frequenti (FQA).

Se doveste avere altre domande riguardanti il prodotto che non trovate sul nostro sito Web vi preghiamo di contattarci attraverso l'e-mail: [support@conceptronic.net](mailto:support@conceptronic.net)

Per ulteriori informazioni dei prodotti Conceptronic, la preghiamo di visitare il sito Web della Conceptronic: [www.conceptronic.net](http://www.conceptronic.net)

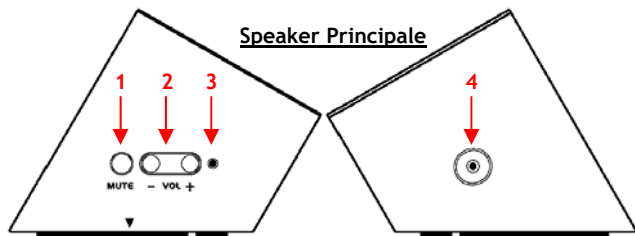
## **1. Contenuto della confezione**

La confezione degli speaker tubolari portatili USB di Conceptronic include i seguenti elementi:

- Gli Speaker Tubolari Portatili USB di Conceptronic
- Istruzioni per l'uso multilingue
- Scheda della Garanzia

# ITALIANO

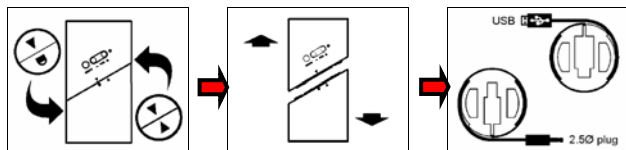
## 2. Illustrazione degli Speaker Tubolari Portatili USB



| N° | Descrizione  |
|----|--|
| 1  | Pulsante silenzio                                    |
| 2  | Pulsante volume Up/Down (alto/basso)                 |
| 3  | LED accensione                                       |
| 4  | Uscita audio per il secondo speaker (jack da 2,5 mm) |

## 3. Uso degli Speaker Tubolari

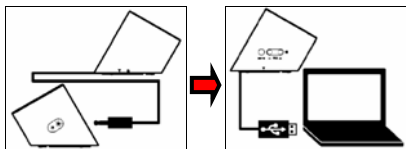
- A. Ruotare i 2 speaker in senso anti-orario per separarli l'uno dall'altro.



- B. Scollegare i cavi da entrambi gli speaker.

## ITALIANO

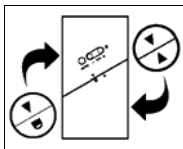
- C. Collegare il secondo speaker mediante il jack da 2,5 mm allo speaker principale.



- D. Collegare la presa USB a una porta USB libera del computer/notebook.

Il computer riconoscerà e installerà gli Speaker Tubolari USB automaticamente oltre a sintonizzare il dispositivo di riproduzione audio di default con gli Speaker tubolari USB.

Per riporre gli speaker scollegarli dal computer e avvolgere i cavi all'estremità inferiore di ciascuno di essi. Sovrapporre uno speaker all'altro e ruotare in senso orario per fissarli.



***Vi auguriamo buon divertimento con i nuovi Speaker Tubolari Portatili USB!***



# PORTUGUÊS

## Conceptronic CLLSPK20P **Manual do utilizador**

### **Parabéns pela compra das Colunas de tubo USB portáteis da Conceptronic.**

O guia de instalação do hardware incluído explica passo-a-passo como instalar o Colunas de tubo USB portáteis da Conceptronic.

Se tiver algum problema, aconselhamos consultar o nosso **site de assistência** (vá a [www.conceptronic.net](http://www.conceptronic.net) e clique em 'assistência' Aqui pode encontrar a Base de Dados das Perguntas Mais Frequentes.

Se tiver outras questões relativas ao nosso produto e não as conseguir encontrar no nosso webiste, pode-nos contactar através do e-mail: [apoyo@conceptronic.net](mailto:apoyo@conceptronic.net)

Para mais informações sobre produtos de Conceptronic, por favor visite o Web Site da Conceptronic: [www.conceptronic.net](http://www.conceptronic.net)

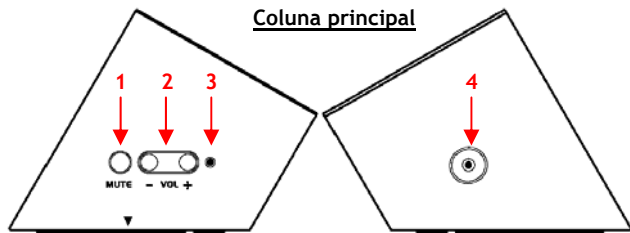
## **1. Conteúdo da Embalagem**

Existem os seguintes elementos na embalagem das Colunas de tubo USB portáteis da Conceptronic:

- Colunas de tubo USB portáteis da Conceptronic
- Manual do utilizador multilingue
- Cartão de Garantia

# PORTUGUÊS

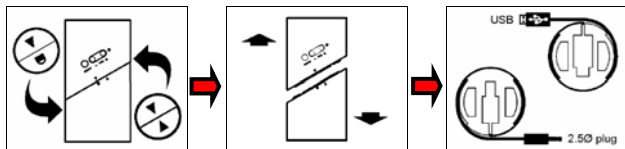
## 2. As colunas de tubo USB portáteis



| Nº | Descrição   |
|----|---|
| 1  | Botão Silenciar                                     |
| 2  | Botão Aumentar / Diminuir volume                    |
| 3  | Luz de Alimentação                                  |
| 4  | Saída de áudio para a segunda coluna (ficha 2,5 mm) |

## 3. Como usar as colunas de tubo

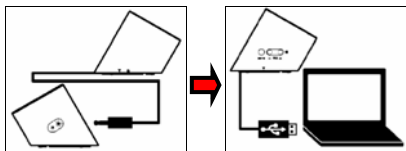
- A. Rode as colunas no sentido contrário aos ponteiros do relógio de modo a separá-las uma da outra.



- B. Tire para fora os cabos das duas colunas.

## PORTUGUÊS

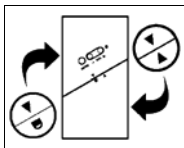
- C. Ligue a segunda coluna com a ficha de 2,5 mm à coluna principal.



- D. Ligue a ficha USB a uma porta USB disponível do seu computador / portátil.

O computador vai reconhecer e instalar automaticamente as Colunas de tubo USB e troca o dispositivo de reprodução predefinido pelas Colunas de tubo USB.

Pode guardar as colunas desligando-as do seu computador e enrolando os cabos novamente na base de cada coluna. Volte a encaixar as duas colunas uma na outra e rode-as no sentido dos ponteiros do relógio para as apertar.



***Divirta-se com as suas Colunas de  
Tubo USB portáteis!***

## Dichiarazione di conformità CE

O fabricante                      2L International BV  
Morada                              Databankweg 7  
    3821 AL Amersfoort, Países Baixos

### DECLARA QUE O PRODUTO

Tipo                                  PORTABLE USB TUBE SPEAKERS 2.0  
Produto                              CLLSPK20P  
Nome de marca                      Conceptronic

### Cumpre as seguintes directivas:

- 2004/108/EEC      Directiva CEM:  
                                    Compatibilidade Electromagnética
- 73/23/EEC              Directiva de Baixa Tensão:  
                                    Equipamento eléctrico desenhado para ser usado  
                                    dentro de determinados limites de tensão

Os seguintes standards foram consultados para avaliar a conformidade:

- EN55022/9.98 Classe B
- EN55024/9.98
- EN 50081-1/1994
- EN 61000-3-2/3/4/1995
- EN 50082-1/1994
- EN 60950/1995

O símbolo confirma que este produto está conforme os padrões e regulamentações acima referidos.



Local e data de emissão: Amersfoort, 03/07/2007 (dd/mm/yyyy)

A handwritten signature in blue ink, appearing to be 'Herman Looijen', is written over a faint, light-colored background.

Herman Looijen, Gestor de Marketing de Produto

# MAGYAR

## Conceptronic CLLSPK20P Felhasználói útmutató

**Köszönjük, hogy a Conceptronic hordozható USB Tube Speakers-ét választotta.**

A mellékelt hardvertelepítési útmutató lépésről-lépésre elmagyarázza, miként kell a USB Tube Speakers-ét telepítenie.

Probléma esetén javasoljuk, hogy vegye igénybe a **Support-site-en** nyújtott segítséget (menjen a [www.conceptronic.net](http://www.conceptronic.net)-re és kattintson a 'Support'-ra. Itt megtalálja a Gyakran Ismételt Kérdések adatbázist.

Ha termékünkkel kapcsolatban további kérdése lenne, és weboldalunkon nem talál rá választ, forduljon hozzánk e-mailben: [support@conceptronic.net](mailto:support@conceptronic.net)

A Conceptronic termékekkel kapcsolatos további információért kérjük tekintse meg a Conceptronic weboldalát: [www.conceptronic.net](http://www.conceptronic.net)

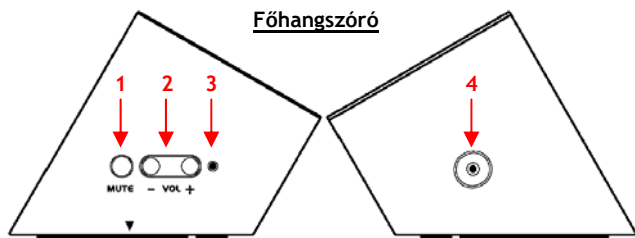
### 1. A csomag tartalma

A Conceptronic hordozható USB Tube Speakers-ét tartalmazó csomagban az alábbiak találhatóak:

- A Conceptronic hordozható Tube Speakers-e
- Többnyelvű felhasználói útmutató
- Jótállási jegy

# MAGYAR

## 2. A hordozható USB Tube Speakers magyarázata

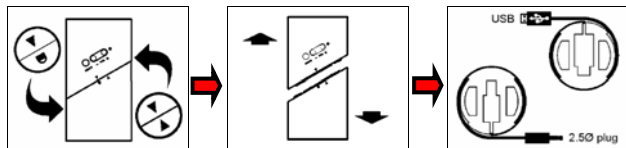


| Sz. | Leírás  |
|-----|---|
| 1.  | Mute (némító) gomb  |
| 2.  | Hangerő fel/le gombja   |
| 3.  | Áramellátásjelző LED  |
| 4.  | Audiokimenet a másik hangszóróhoz (2,5 mm-es jack-csatlakozóhévely) |



### 3. Hogyan kell a Tube Speakers hangszórókat használni

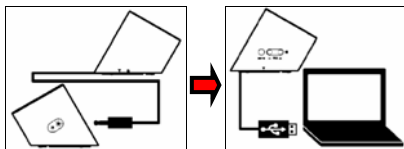
- A. Forgassa el a hangszórókat az óramutató járásával megegyező irányban, hogy azokat egymásról leválassza.



- B. Húzza ki a kábelt mindkét hangszóróból.

## MAGYAR

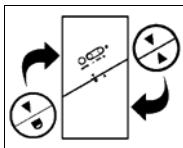
- C. 2,5 mm-es jackdugó segítségével csatlakoztassa a másik hangszórót a főhangszóróhoz.



- D. Csatlakoztassa az USB-csatlakozót a számítógép/notebook valamelyik szabad USB-portjához.

A számítógép automatikusan felismeri és telepíti is az USB Tube Speakers hangszórókat, majd az alapértelmezés szerinti lejátszóeszközt összekapcsolja az USB Tube Speakers hangszórókkal.

A hangszórók úgy tárolhatók, hogy azokat leválasztja a számítógépről, majd a kábeleket visszatekeri az egyes hangszórók aljára. Tegye a két hangszórót egymásra, majd – rögzítésükhöz – forgassa el őket az óramutató járásával megegyező irányban.



***Kívánjuk, hogy örömmel használja a hordozható  
USB Tube Speakers-t!***

# TÜRKÇE

## Conceptronic CLLSPK20P Kullanıcı Kılavuzu

### Conceptronic Taşınabilir USB Tüp Hoparlörü Satın Aldığınız İçin Tebrikler.

Bu Donanım Kurulumu Rehberi, Conceptronic CLLSPK20P adım adım nasıl monte edileceği ve yükleneceği konusunda bilgi içermektedir.

Problem ortaya çıktığında, **destek sitemize** gitmenizi ([www.conceptronic.net](http://www.conceptronic.net) adresine gidiniz ve 'Support' sayfasına tıklayınız) tavsiye ederiz. Burada Sıkça Sorulan Sorular Veritabanını bulacaksınız.

Ürününüz ile ilgili başka sorularınız olduğunda ve bunların yanıtlarını web sitemizde bulamadığınız takdirde bize e-posta gönderin: [support@conceptronic.net](mailto:support@conceptronic.net)

Conceptronic ürünleri ile ilgili daha fazla bilgi için lütfen Conceptronic Web Sitesini ziyaret edin: [www.conceptronic.net](http://www.conceptronic.net)

Aşağıda açıklanan yazılım yüklemesi bilgisayarınızdaki yüklemeden biraz daha farklı olabilir. Bu durum kullandığınız Windows sürümüne bağlıdır.

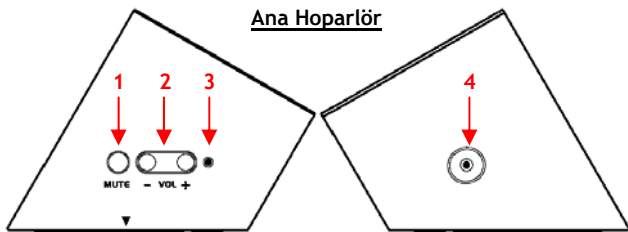
## 1. Paket İçeriği

Conceptronic Taşınabilir USB Tüp Hoparlör paketinin içeriği aşağıdaki gibidir:

- Conceptronic Taşınabilir USB Tüp Hoparlör
- Çok Dilli Kullanıcı Kılavuzu
- Garanti Belgesi

# TÜRKÇE

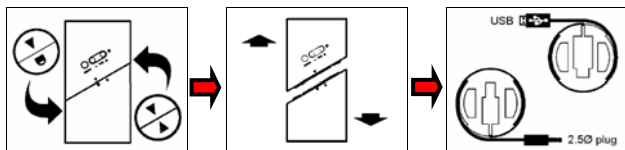
## 2. Taşınabilir USB Tüp Hoparlör Tanıtımı



| Nr | Tanım                                   |
|----|---|
| 1  | Sessize Alma Düğmesi                    |
| 2  | Ses Yükseltme/Azaltma Düğmesi           |
| 3  | Güç LED'i                               |
| 4  | İkinci hoparlöre Ses Çıkışı (2,5mm Jak) |

## 3. Tüp Hoparlörler nasıl kullanılır

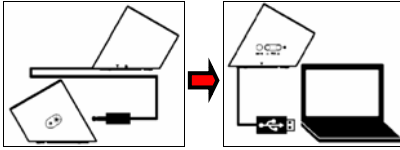
- A. 2 hoparlörü birbirinden ayırmak için hoparlörleri saat yönünün tersi yönde çevirin.



- B. Kabloları her iki hoparlörden dışarıya doğru çekin.

## TÜRKÇE

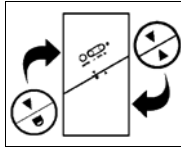
- C. 2,5mm Jak'lı ikinci hoparlörü ana hoparlöre bağlayın.



- D. USB konnektörü bilgisayar/dizüstü bilgisayarınızda bulunan boş bir USB porta bağlayın.

Bilgisayar, USB Tüp Hoparlörleri otomatik olarak tanır, yükler ve varsayılan kayıttan çalma cihazını USB Tüp Hoparlörlere aktarır.

Hoparlörleri bilgisayarınızdan sökerek ve her iki hoparlörün altına kabloları dolayarak saklayabilirsiniz. Her iki hoparlörü üst üste koyun ve saat yönünde çevirerek sabitleyin.



***Taşınabilir USB Tüp Hoparlörlerinizi kullanmanın keyfini çıkarın!***

# Declaration of CE Conformity

**The manufacturer** 2L International BV  
**Address** Databankweg 7  
3821 AL Amersfoort, the Netherlands

**Hereby declares that the product**

**Type** PORTABLE USB TUBE SPEAKERS 2.0  
**Product** CLLSPK20P  
**Brandname** Conceptronic

**Complies with following directives:**

- 2004/108/EEC EMC directive:  
Electromagnetic Compatibility
- 73/23/EEC Low Voltage Directive:  
Electrical equipment designed for use within certain  
voltage limits

**The following standards were consulted to assess conformity:**

- EN55022/9.98 Class B
- EN55024/9.98
- EN 50081-1/1994
- EN 61000-3-2/3/4/1995
- EN 50082-1/1994
- EN 60950/1995

The symbol confirms that this product conforms to the above named standards and regulations.



Place and date of issue: Amersfoort, 03/07/2007 (dd/mm/yyyy)

A handwritten signature in blue ink, appearing to be 'Herman Looijen', written over a horizontal line.

Herman Looijen, Product Marketing Manager