



HD DVR Quick Start Guide

Part One: Basic Operation	2
1. Basic installation	2
2. Startup	2
3. Turn off	2
4. Login	2
5. Preview	3
6. Recording Config.....	3
7. Playback	5
8. Network	6
9. Alarm	6
10. PTZ Control	7
Part two: Remote Control	7
1. Remote Control	7
2. Multi-device manage platform software – CMS	7
3. Web Monitor	8
4. Access device in public network (Cloud operation)	10
5 Mobile Monitor	14

Part One: Basic Operation

1. Basic installation

1.1 HDD installation

Please install the hard disk before using this product for the first time.

Ensure correct connection of the power cable and data cable of the HDD. This product can support either one or two HDDs, depending on the model purchased.

Note: the device can run normally without a HDD, but cannot record and playback.

1.2 Mouse connection

There are either one or two USB ports on the back panel and one USB on the front panel, any of which can be used for a mouse, flash disk, WIFI, 3G module, etc.

2. Startup

Connect the power, turn on the switch at the back panel. The indicator light should turn on, indicating the DVR is operational. After starting up the device will beep. The default output mode is multi-window mode.

Note: Restart the power after an abnormal power off, and the DVR will automatically recover the state it was in at the point of failure.

3. Turn off

There are two methods to turn off the DVR, via soft switch and hard switch.

Soft switch: entering [Main menu] and choosing [Logout] in the [turn off the system] option is referred to as soft switch.

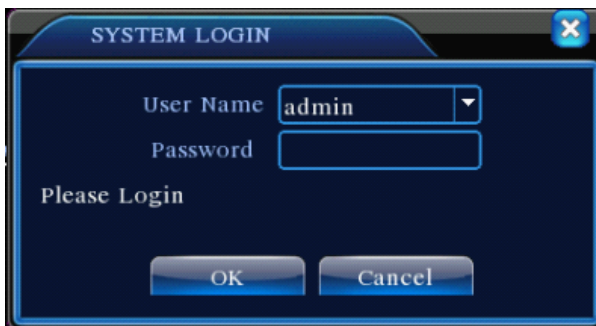
Hard switch : Pressing the power supply switch is referred to as hard switch.

Note: The setting information must be saved before replacing the battery otherwise information will be lost.

4. Login

When the DVR boots up, user must login and the system provides the corresponding functions with the user purview. There are two user settings; Admin and Guest. Passwords are set for these by the user.

“Admin” is the super user purview; “Guest” is to be used for preview and playback. User can modify the passwords for Admin and Guest, but cannot modify the authorities attached to them.



Pic 1 : Login

Password protection: if the password is entered incorrectly three times, the alarm will start. If the password is entered incorrectly five times, the account will be locked. (Through reboot or after half an hour, the account will be unlocked automatically). For safety's sake, please revise user name and password regularly.

5. Preview

Login normally and choose the multi-menu preview status.

The system date, time and channel title are shown in each viewing window. The surveillance video and the alarm status are shown in each window.

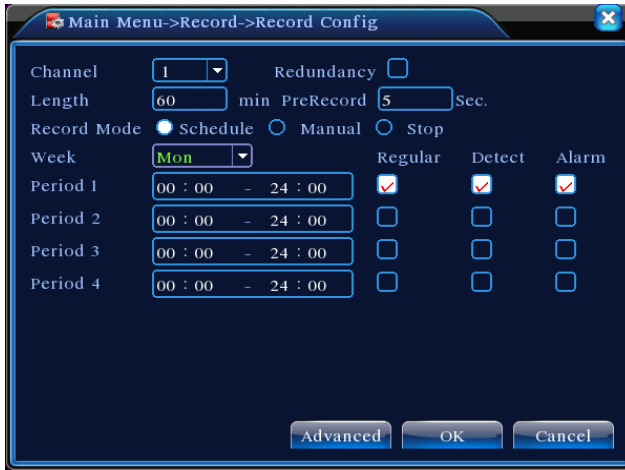
1		Recording status	3		Video loss
2		Motion detect	4		Camera lock

Chart 1 icon on preview window

6. Recording Config

Set the recording parameters in the surveillance channel. You can enter [Main Menu]> [Record]> [Record Config] to set. The system's default set is 24 hours continuous recording.

Note: There is at least one read-write hard disk if the DVR records normally.(refer to chapter 4.5.1 HARD DISK Manage)



Pic 2 Recording Config

【Channel】 Choose the corresponding channel number to set the channel. Choose the “all” option to set the entire number of channels.

【Redundancy】 Choose the recording file and backup in two hard disks. One is the read-write disk, the other is the redundant disk. (refer to 4.5.1 in reference CD)

【Length】 Set the time length of each video file. 60 minutes is default length.

【Prerecord】 Record 1-30 seconds before the action (file length is decided by the stream).

【Record Mode】 Set video state: schedule, manual and stop.

Schedule: Record according to the set video type (regular, detect and alarm) and time section.

Manual: Click the “all” button and make the corresponding channel record, regardless of the current state of the device.

Stop: click the “stop” button and make the according channel stop recording regardless of the current state of the device.

【Period】 Set the time section of common recording. The recording will start only in the set range.

【Recording Type】 Set recording type: regular, detect or alarm.

Regular: Perform a regular recording in the set time section. The video file type is “R”.

Detect: Trigger the “motion detect”, “video blind” or “video loss” signal. When above alarm is set as opening recording, the “detection recording” state is on. The video file type is “M”.

Alarm: Trigger the external alarm signal in the set time section. When above alarm is set as opening recording, the “detection recording” state is on. The video file type is “A”.

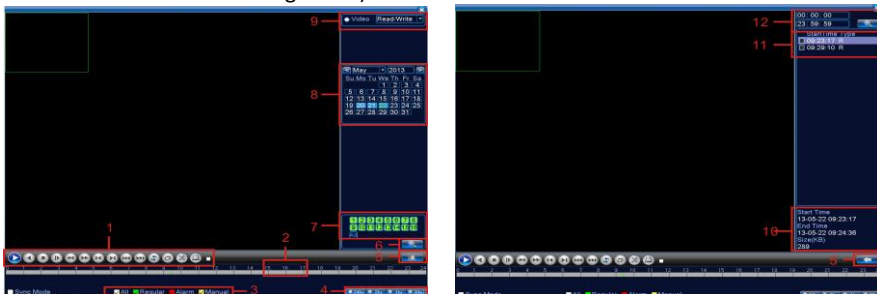
7. Playback

There are two methods for you to play the video files recorded on the hard disk.

1. In the desktop shortcut menu.
2. Main Menu>Record>Playback.

Enter the playback interface – the device allows playback of multiple channels at the same time.

Note: The hard disk that saves the video files must be set as read-write or read-only state. (refer to 4.5.1 HARD DISK management)



Pic 4: Playback

- 1.Playback control
- 2.Operating Tips
3. Record type
- 4.Time progress bar options
- 5.Switching time or file mode
- 6.File Search
- 7.Channel option
- 8.Date option
- 9.Storage Device option
- 10.File information
- 11.File Option
- 12.Time

【File information】 Start time, end time and size.

【File option】 Choose the file to playback/backup.

【playback control】 Refer to the following sheet for more information.

Button	Function	Button	Function
	Play/Pause		Backward
	Stop		Slow Play
	Previous Frame		Fast Play
	Next Frame		Previous File
	Repeat Playback		Next File
	Full Screen		

Table2 Playback control key

Note: Frame by frame playback is only performed in the "pause" playback state.

Special functions:

Partial enlarged: viewing single pictures in full-screen playback mode, the user can use the left mouse button box to choose any size area on the screen, then by clicking the left mouse button, the selected area will enlarge. Double click the left mouse button to exit the partially enlarged image.

Note: If the current resolution of one channel is beyond maximum resolution, it will be displayed as a red "X" when playback is attempted.

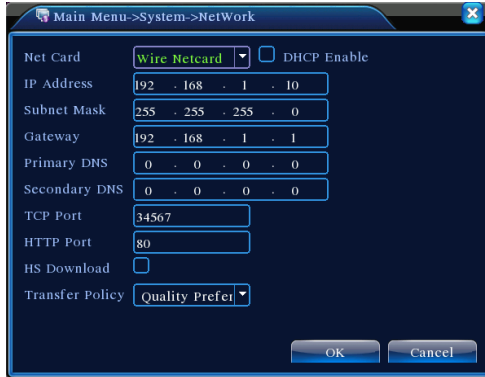
8. Network

Doing network setup through [Main Menu]>[System]>[Network]

【IP address】 Set the IP address. Default: 192.168.1.10.

【Subnet Mask】 Set the subnet mask code. Default: 255.255.255.0.

【Gateway】 Set the default gateway. Default: 192.168.1.1.



Pic 5: Network setting

Set up the equipment's IP address and the router in the same network segment. For example, the router IP address is 192.168.1.1, and the subnet mask is 255.255.255.0. According to the default setup, generally the default gateway is the router IP address, so enter IP address 192.168.1.10 in the IE browser to introduce equipment such as image surveillance devices and for remote monitoring in the public network. For detailed setup refer to "Network setup reference".

9. Alarm

9.1 Motion Detection



Pic 6 Motion Detection

Motion detection setup. Set DVR equipment to activate an alarm, linkage record and make the PTZ return to the preset position when there is a moving object detected in a designated area between Monday and Friday.

Step1. Choose **【Main Menu】 > 【Alarm】 > 【Motion Detect】**, then enter the setup interface.

Step2. Choose one channel and adjust sensitivity level, then set the time period of alarm surveillance. Set the monitor area (click the “set” button to choose the areas you want, or the “default” button to choose all areas, then right click to choose "up window").

Step3. When at the alarm stage, the DVR can take linkage measures. Alarm output, recording, tour, PTZ activation, snapshot, show message, sending email (need to set email parameters at net service) and buzzer (local buzzer).

Step4. Set other channels alarm parameters by following step 2 and step 3.

Note: Video blind, video loss and alarm input's setup method are similar to motion detection.

10. PTZ Control

Perform simple PTZ control via below steps:

Step 1: **【Main Menu】 > 【System】 > 【PTZ】**, to set parameter of channel, protocol, etc.

Step 2: under preview status, enter single window of PTZ control;

Step 3: perform a single click of the right button, then choose PTZ control. Choose normal function or high-speed. Click left button to operate PTZ directly, then move the mouse to control the direction of PTZ. Use the mouse roller to zoom in or zoom out of the image.

Part two: Remote Control

1. Remote Control

After successfully connecting to a network, users can remote monitor in two ways: multi-device client software or common browser. Multi-device client software CMS is a professional software used for remote monitoring of multiple devices, with the added benefits of safety, convenience, stability and centralized management. This also negates the need to install activeX, therefore we recommend use of CMS. Remote monitoring by browser is performed via the kernel browser in an individual's PC, such as IE, Chrome, etc.

2. Multi-device manage platform software – CMS

CMS centralizes management of the DVR and networked devices, allowing control through one PC.

Step 1: CMS software is included with the DVR. Open the enclosed CD, then follow the tips to install it.

Step 2: After installing this software on the local PC, log onto the interface as in picture 7, enter the “add

device interface” by clicking **【System】>【Device Manager】>【Add zone/device】**, enter the device adding interface, follow the tips to input DVR information, then exit after saving.

Step 3: repeat the above steps on the interface of Device Manager, where the user can add multi devices for centralized management.



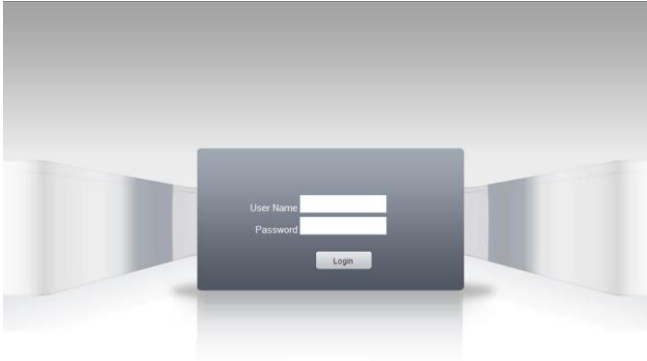
Pic.7

3. Web Monitor

When connected to a network, use the PC's browser to log in to the DVR for remote access.

Step 1: install the ActiveX, file name is "I~~New~~Active.exe", which can be downloaded from the included CD, then follow the tips to install it.

Step 2: connect with the device, open browser, input the IP address of that device; for example, if the IP address is 10.2.2.88, then input <http://10.2.2.88> at the address column. The below page will appear:



Pic.8 WEB login interface

Step 3: Log in, inputting user name and password. If you choose to link with all the videos after login, you will need to choose network stream; for a LAN use main stream to transfer, for a WAN use the extra stream to transfer. We suggest choosing extra stream if your network is poor. The default administration input is 'admin', no password. User should revise the password of 'admin' after login. Below pic 9 is the interface after successful login.



Pic.9 WEB interface

3.1 Basic remote control operation

To do remote control at the interface of pic 9

3.2 Screen Split

To choose the mode of preview

3.3 Playback

Enter playback area, can support multi-channel playback at the same time.

3.4 Log

Show log information

3.5 Local config

To set device alarm, enable linkage function on the remote network client side.

3.6 Channel control

Open the video, choose the video on the left video window and then choose channel on the right. Double click it to open the first video, then choose another channel and double click to open the second video.

Perform the same action to open all subsequent channels. If the channel did not change, system will close previous video and open the new one you choose.

Note: user can choose the most appropriate image mode when opening remote video control.

Close video: at the video window, choose the video that you want to turn off, right click it and choose to shut the window. All the windows can be closed at the same time by selecting to close all.

3.7 Remote config device

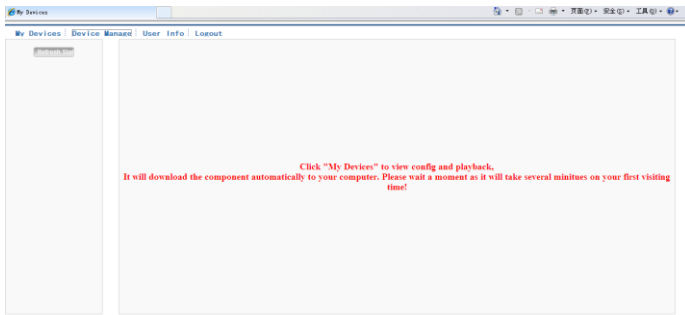
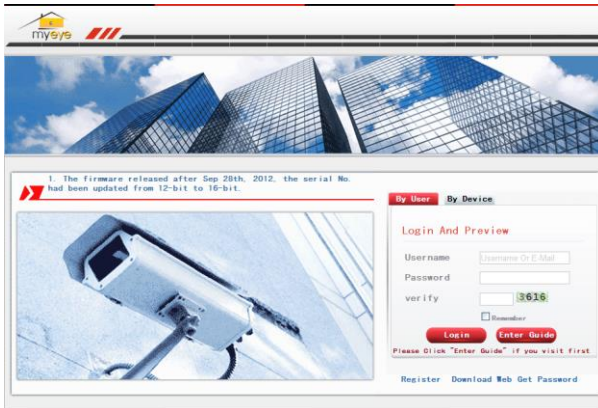
At preview window, single click right button, choose 'device config'. This will configure the parameters of a device, which will be synchronized to local side including: record, alarm, system, advanced, Info, etc.

4. Access device in public network (Cloud operation)

Guide

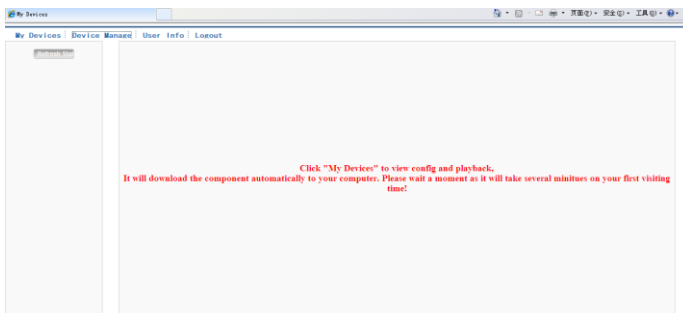
Visit <http://xmeye.net> to see below login page. This is divided into two modes; login by user and by device. The user can choose between these options to maximise convenience.

**Note: to log in "by user", the user needs to register the first time.*



➤ **Log in by user**

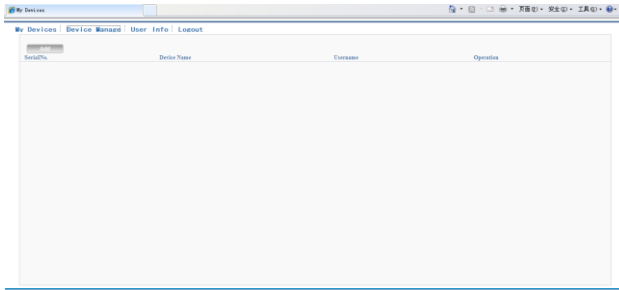
Customers using their registered user name and password to log in will see below Interface.



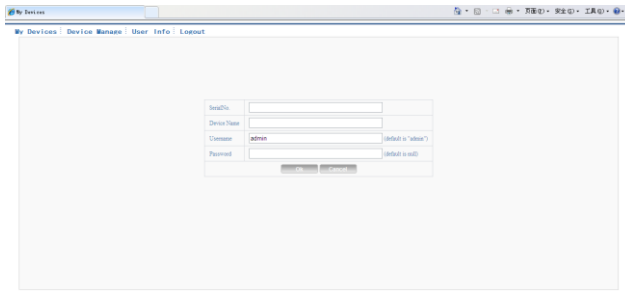
Pic 5.3 cloud technology operation interface

Device manage

Mainly used to add a device, click “add” to input the serial number of device to be monitored.



Pic 5.4 device manage interface



Pic 5.5 add interface at device manage

Note: in pic 5.5, the user name means the user name of monitored device, password means the password of related user.

My Device

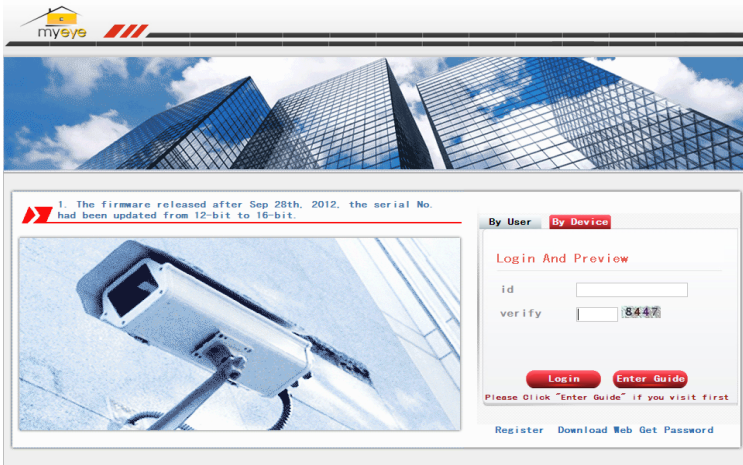
Mainly shows all the added devices. Click the on-line device name, providing access to control this device accordingly.



Pic 5.6 monitor page - log in by user

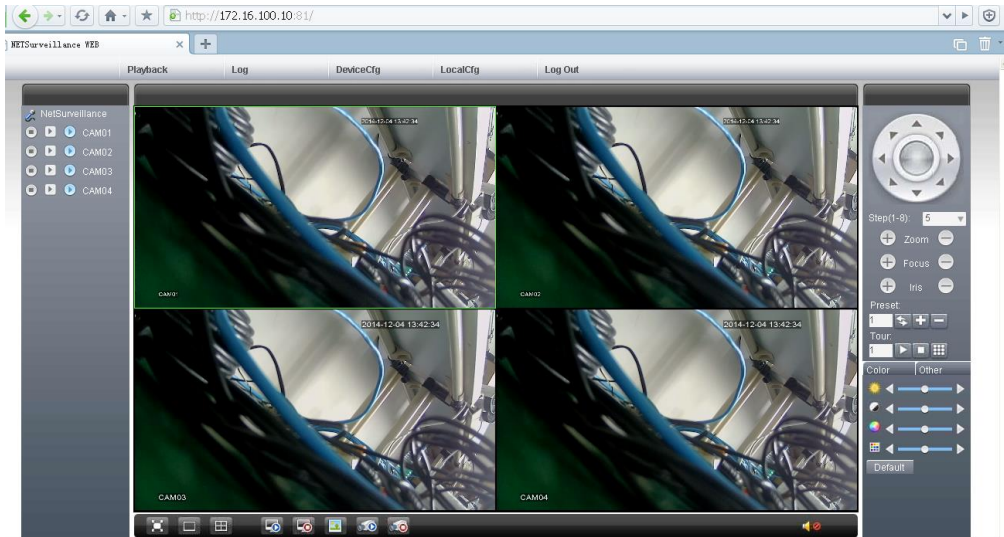
***Remark:** the icon of "❌" means offline, the device did not connect to server successfully.

➤ **Log in by device**



Pic 5.7 interface of log in by device

Input the serial number of device and the verify code to monitor and control the device directly.



Pic: 5.8 monitor page - log in by device

5 Mobile Monitor

Introduces extra stream techniques when mobile monitoring, support channels switch (eg. Windows mobile)

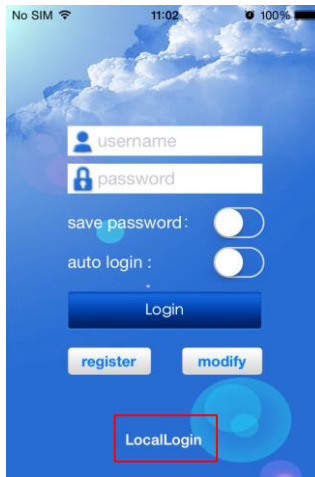
Step 1. DVR config, go to [Main Menu]->[System]->[Encode], enable Extra Stream.

Step 2. install mobile monitor software to cellphone, get the software from CD enclosed, (the software for android mobile is [XMEye.apk](#))

Note:

iPhone mobile monitoring software: use mobile to search " [XMEye](#) " in the App store and install it online.

Step 3. After successfully installing the software, click the **XMEye** program icon, which runs the program after the initial interface below:



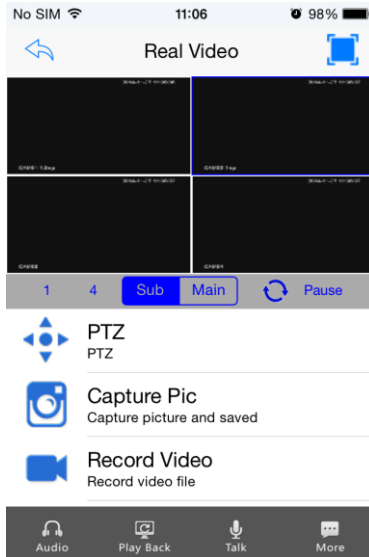
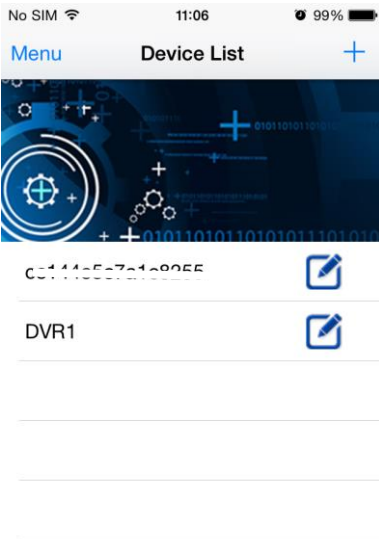
Pic 13 Mobile client side interface

Step 4: click "LocalLogin", and select "SerialNum", then add device by scanning QR code of DVR.



(Add device successfully)

Step 5: click "OK" to return to device list, and click one device name to enter preview interface.



Pic:14 mobile monitor interface

Note:
when the DVR is in a LAN, the mobile should connect to a wireless router to access the device.

