



**CONCEPTRONIC**

# 8-Channel IP Surveillance Kit Network UM

**C8CHIPSKIT**



**V1.0**

# Network Access

Description	Requirement
CPU	Pentium 4 3.0GHz or above
Operating System	Windows XP/ Vista/ 7 / 8 / 8.1
Memory	1 GB RAM
Video	256 MB of video memory
Network (LAN)	10/100 Base T Network
Browser	Internet Explorer 7 or above Google Chrome / Mozilla Firefox *with the installed IE Tab plug-in
Media Player	Quick Time Player

## System Requirements

## Getting Started

The default ID and Passwords

User Account	ID	Password
Guest	user	1111
Operator	operator	2222
Admin	admin	3333

## Find device IP address

The device IP address can be found in local NVR configuration. Enter Menu -> Setup and then click on Information. The device information is presented as figure below. Find IP address in LAN.

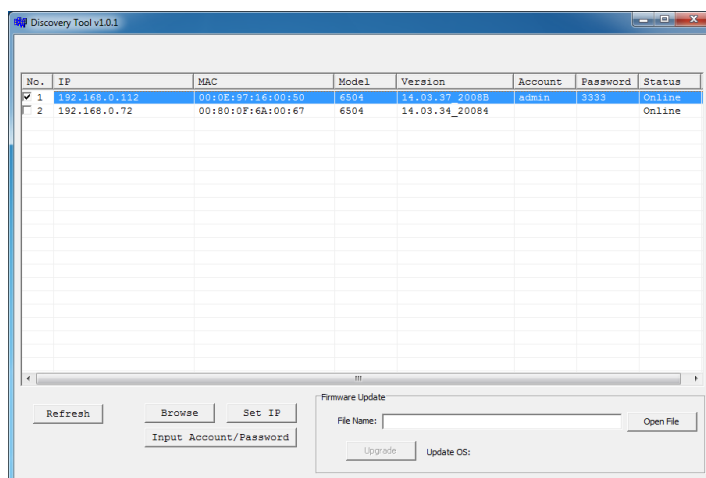
**Open browser, enter IP address of the NVR, and press [Enter] (The default IP address of the NVR: 192.168.0.89)**

## Discovering devices by search tool

The discovery tool is provided for searching Conceptronic network video devices in a network. When NVR device is correctly installed in a network, it can be searched by the tool. The steps of applying this search tool are as below.

### Step 1

Launch the Discovery Tool. The tool will start searching and then displaying the NVR devices on the list after they are found.

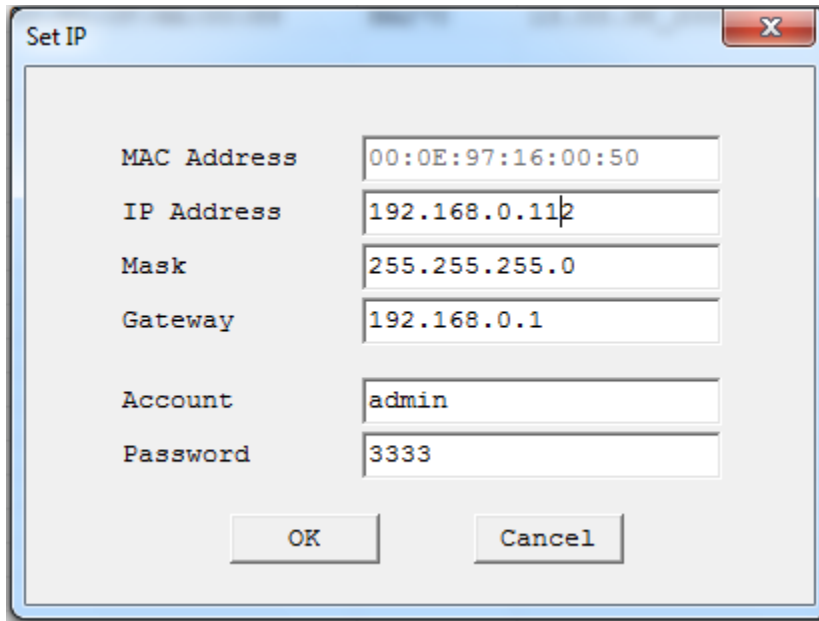


### Step 2

Check the box to select a camera device from the list. The following operations will be applied on it.

### Step 3

The selected NVR may have been assigned a valid IP address via DHCP server. It can also be manually given an IP address. To do so, click on "Set IP" button. In the pop-up "Set IP" window, input the IP, Subnet Mask and Gateway. Input account info if NVR is password protected

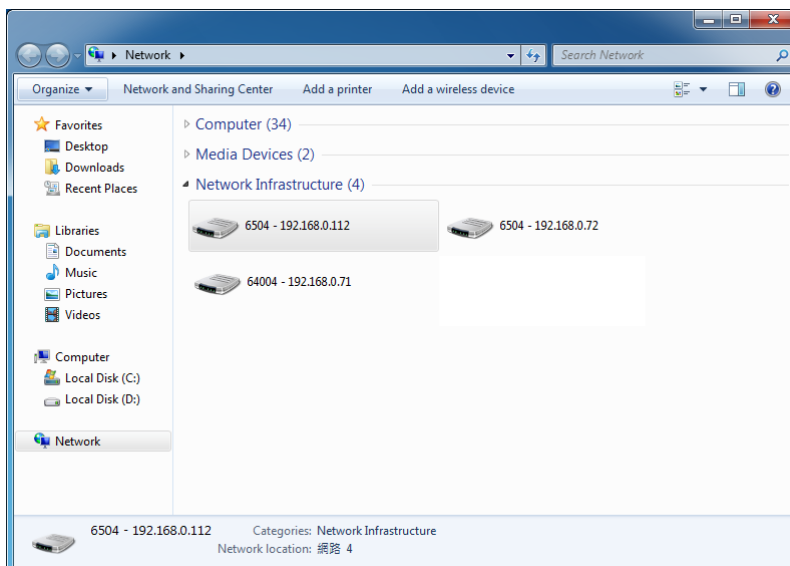


#### Step 4

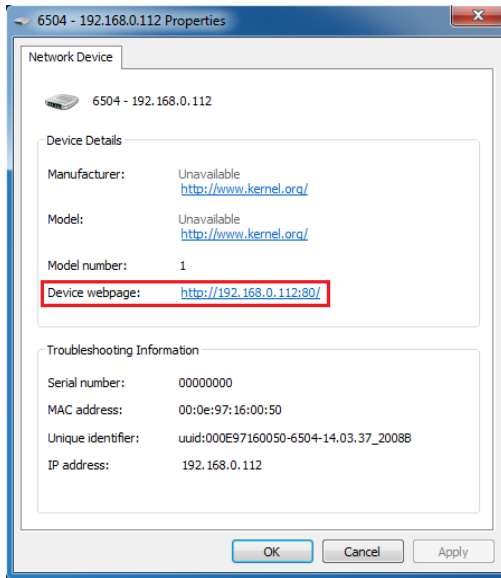
Click on the “Browse” button. This will launch an IE browser and link to the NVR web page immediately.

## Discovering devices in Windows Network

The NVR can be discovered in “Windows Network” of a client PC when it is connected in a network with DHCP and UPnP services available. See the figure below.

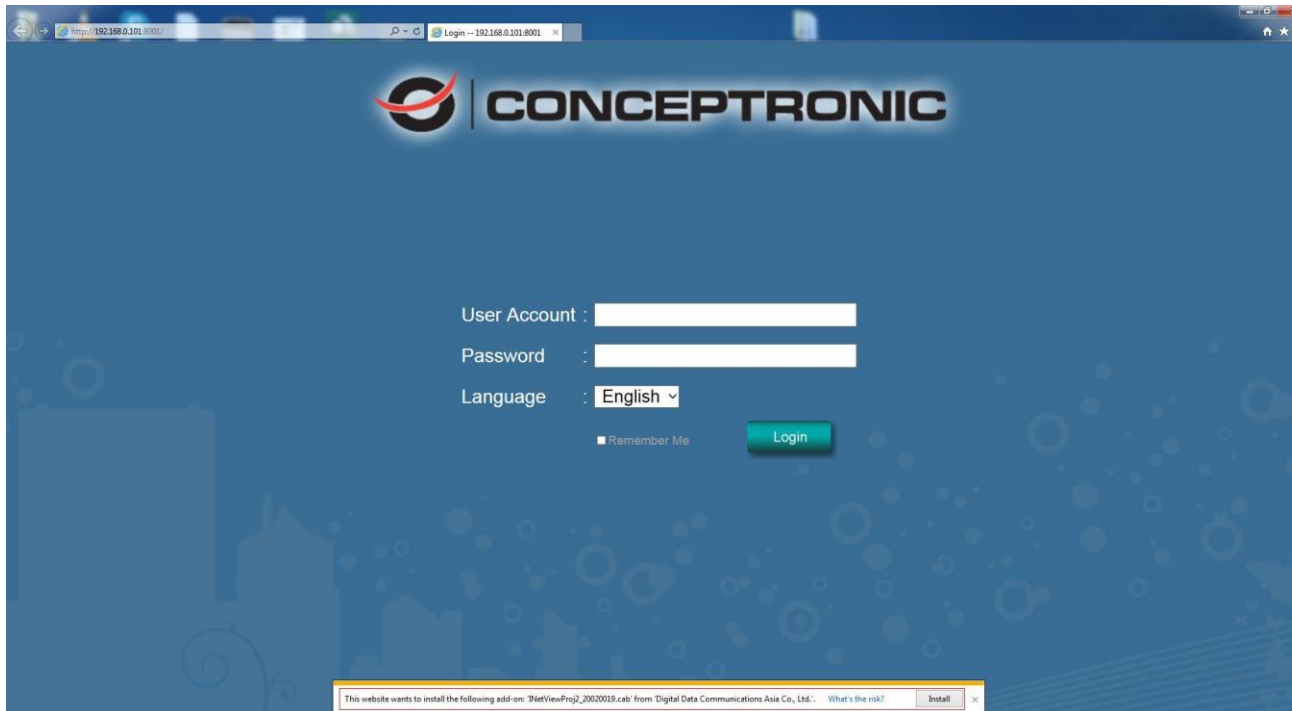


Right-click on the device and select “Properties”, the pop-up window shows all the information related to the device, including the **web access info**. Use the web address to connect to the NVR. Or simply double-click on the selected device, which gets immediately access to the NVR webpage.



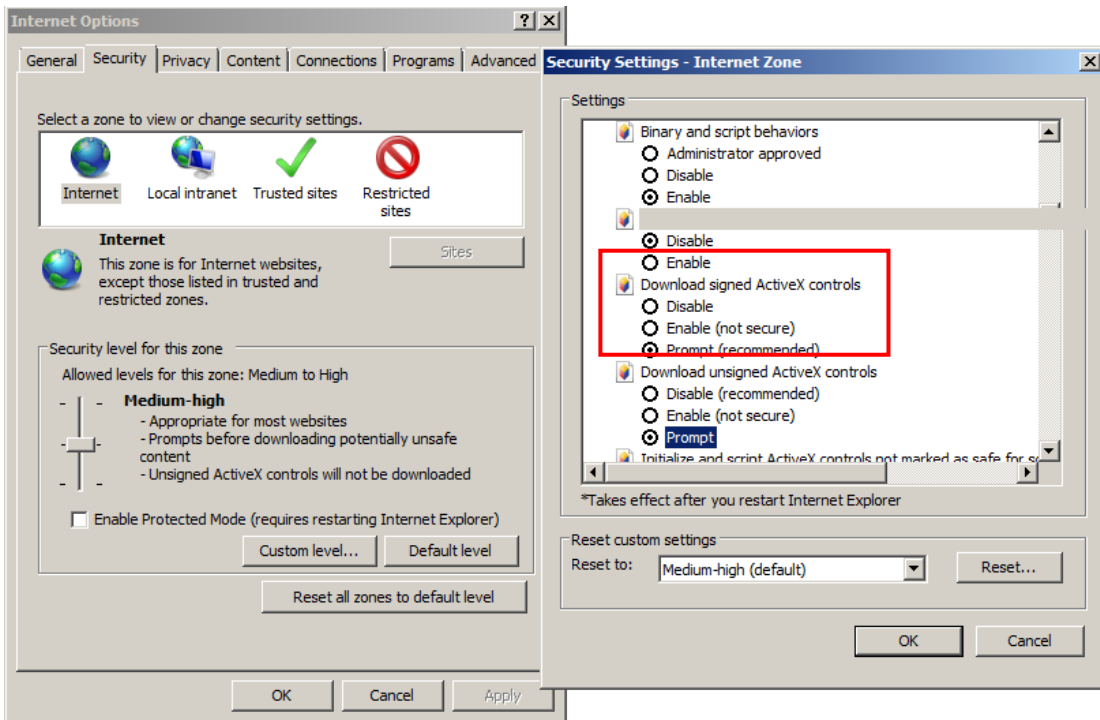
## ActiveX add-on installation

The access to the NVR webpage for the first time will be prompted to install the ActiveX. This installation is essential for viewing live video via IE browser. To allow the installation, click “Install” button on the message bar. Follow the instructions to complete the installation.

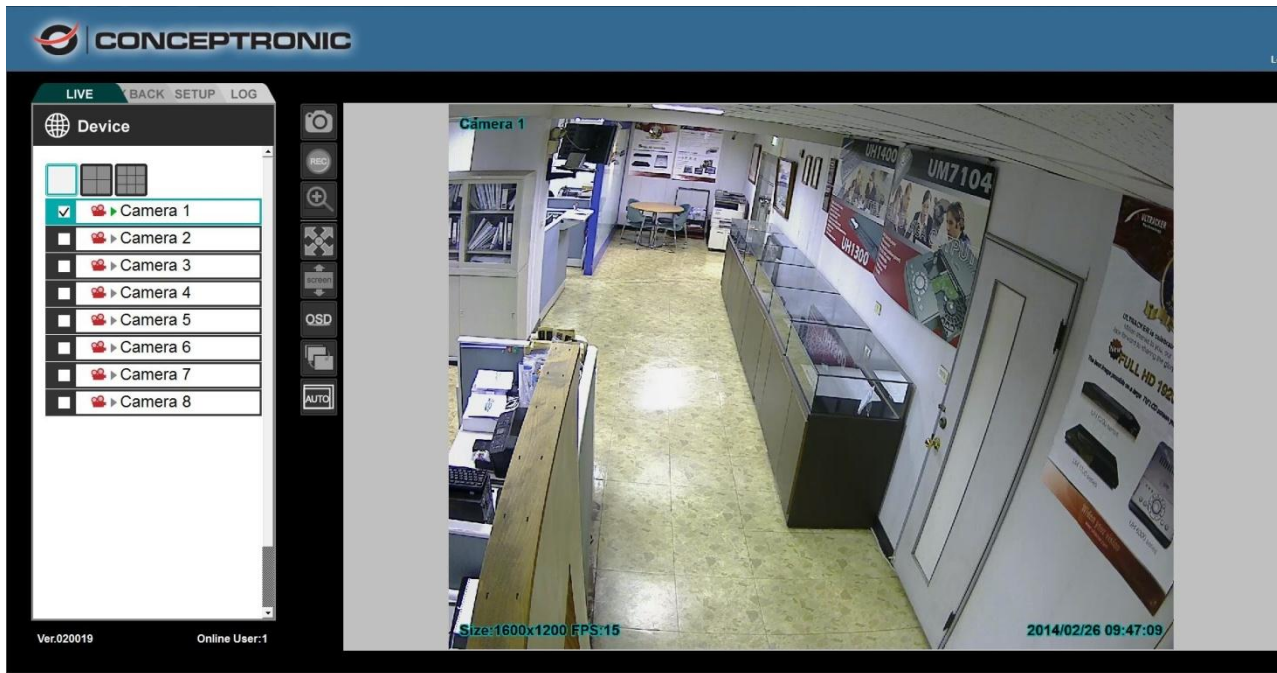


### **NOTE**

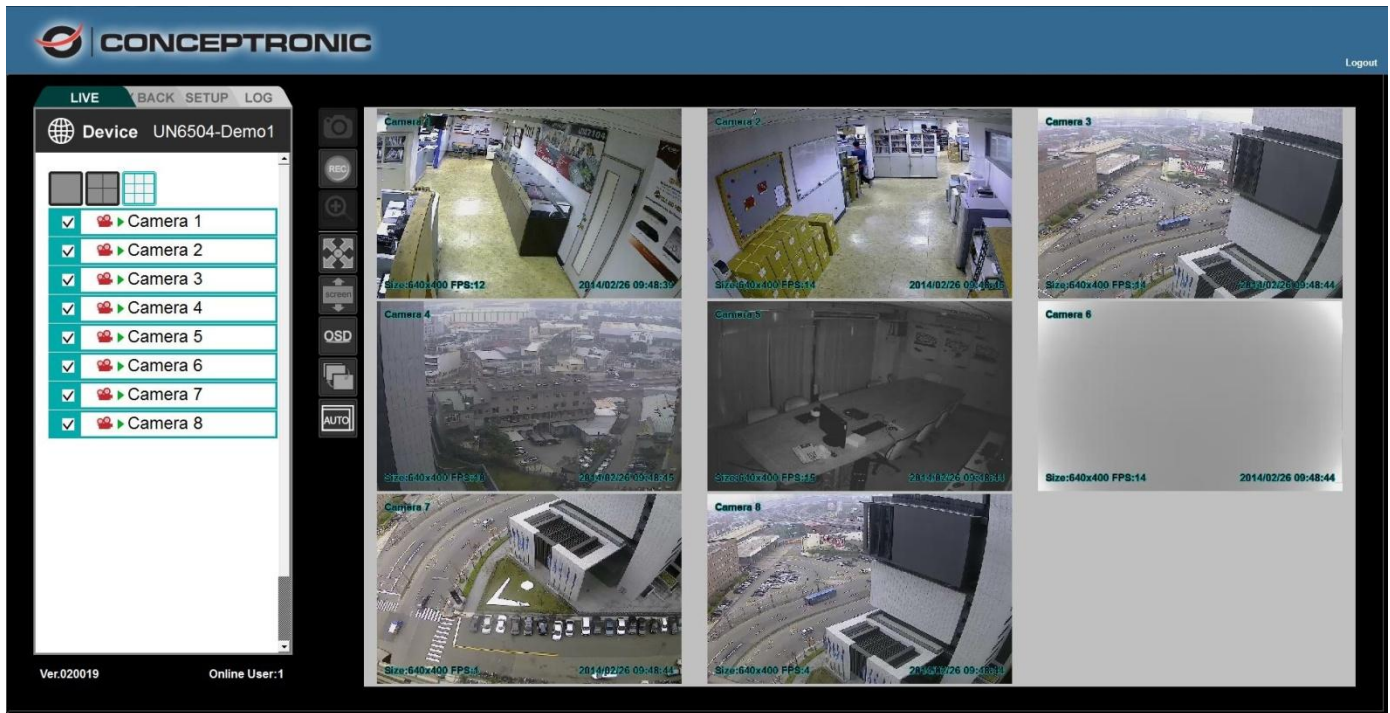
If there is not any prompt message or ActiveX cannot be installed at all, change the IE security level and settings. In IE → Internet Options → Security → Custom level, make sure the “Download signed ActiveX controls” setting is “Enable” or “Prompt” selected.



Enter ID and Password to login. The IE browser can then display the web UI of the NVR and the live video of the managed cameras as below.




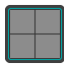
# Web UI Operations




## Live Viewing

 Click this button for live mode.

 Click this button to view in single channel

 Click this button to view in Quad mode

 Click this button to view in 9-split mode.

Drag & Drop (or tick/untick) the selected camera from the list to the viewer channel.

<input checked="" type="checkbox"/>	▶ Camera 1
<input type="checkbox"/>	▶ Camera 2
<input type="checkbox"/>	▶ Camera 3
<input type="checkbox"/>	▶ Camera 4
<input type="checkbox"/>	▶ Camera 5
<input type="checkbox"/>	▶ Camera 6
<input type="checkbox"/>	▶ Camera 7
<input type="checkbox"/>	▶ Camera 8



View in video image as 1600\*1200.



View in video image as 640\*400.



Switch automatically to HD or SD resolution when viewing in single channel or multi channel mode respectively.



Press this button to capture current live image.



Press this button to record image to PC.



Press this button to digital zoom in single channel.



Press this button to enlarge image to full screen, press keyboard "Esc" to return.



Press this button to expand image to fit image window size.



Press this button to hide the OSD text overlap.



Press this button for camera sequence

**Online User:2**

This show user online status, maximum allow 8 users online.