



Multi Language Quick Guide

CCTV Surveillance Kit



V2.0

Conceptronic CCTV Surveillance Kit

1. Package contents

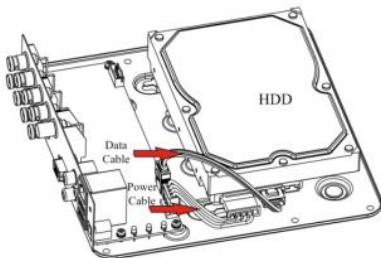
The following items are present in the package of the Conceptronic CCTV Surveillance Kit:

- DVR x 1
- Camera x 4
- 18m BNC Cables x 4
- Splitter Cable x 1
- Power Adaptor x 1
- USB Mouse x 1
- Resource CD x 1
- QIG x 1

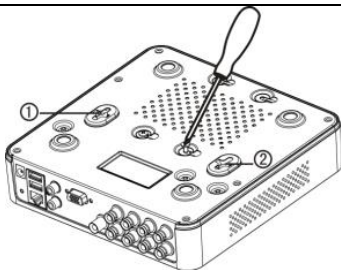
2. Installation & usage

Step 1. Install the HDD.

- 1) Loosen the screws and remove the cover.
- 2) Connect the data cable and power cable to the HDD.



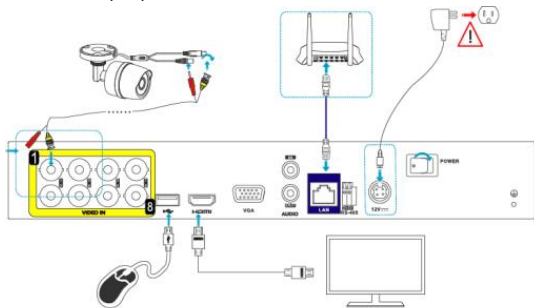
- 3) Place the HDD on the bottom of the device and fix it.



4) Re-install the cover of the DVR and fasten screws.

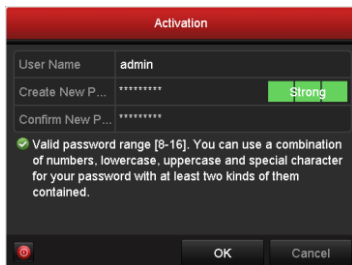
Note: The HDD installation steps vary according to different models.

Step 2. Connect peripheral devices to the DVR.

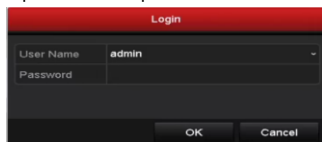


Step 3. Power on the DVR.

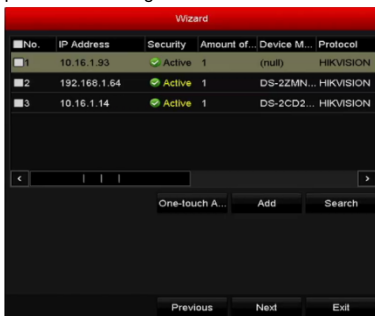
Step 4. Activate the DVR for initial access. Input a strong password and confirm it.



Step 5. Log in to the DVR. Input the admin password.



Step 6. Follow the Setup Wizard to configure the network cameras.



Step 7. You can perform the operation and configuration of the device, including the live view, record schedule, playback, backup, etc..



(Optional) You can also log in to the DVR to configure and operate via web browser. Input the IP address of the device and then press Enter.



Enjoy the use of your Conceptronic CCTV Surveillance Kit!

Conceptronic CCTV Surveillance Kit

1. Packungsinhalt

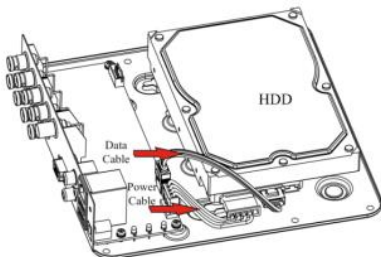
Folgende Teile befinden sich in der Verpackung von Conceptronic CCTV Surveillance Kit:

- DVR x 1
- Camera x 4
- 18m BNC Cables x 4
- Splitter Cable x 1
- Power Adaptor x 1
- USB Mouse x 1
- Resource CD x 1
- QIG x 1

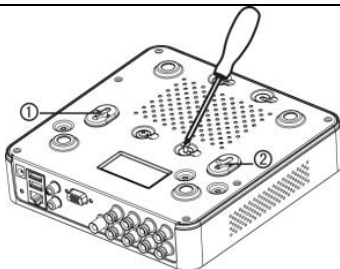
2. Installation & Verwendung

Step 1. HDD installieren

- 1) Lösen Sie die Schrauben und entfernen Sie die Abdeckung.
- 2) Schließen Sie das Daten- und das Stromversorgungskabel an der HDD an.



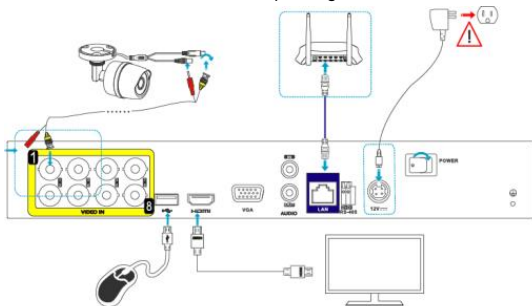
- 3) Befestigen Sie die HDD am Geräteboden.



- 4) Bringen Sie die Abdeckung wieder am DVR an und ziehen Sie die Schrauben fest.

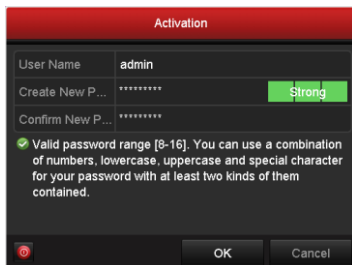
Hinweis: Die Schritte bei der HDD-Installation variieren je nach Modell.

Step 2. Schließen Sie die Peripheriegeräte am DVR an.



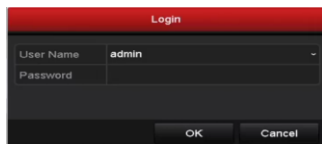
Step 3. Schalten Sie den DVR ein.

Step 4. Aktivieren Sie den DVR für den erstmaligen Zugriff. Geben Sie ein starkes Kennwort ein und bestätigen Sie es.



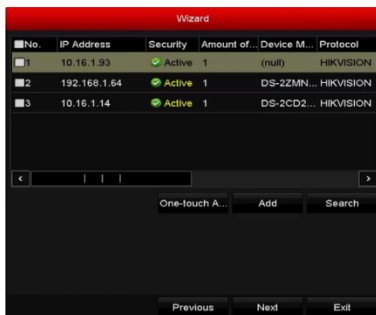
The 'Activation' dialog box has a red title bar. It contains three input fields: 'User Name' with 'admin', 'Create New P...' with masked characters and a green 'Strong' indicator, and 'Confirm New P...' with masked characters. Below the fields is a green checkmark and a message: 'Valid password range [8-16]. You can use a combination of numbers, lowercase, uppercase and special character for your password with at least two kinds of them contained.' At the bottom are 'OK' and 'Cancel' buttons.

Step 5. Melden Sie sich beim DVR an. Geben Sie das Administratorkennwort ein.



The 'Login' dialog box has a red title bar. It contains two input fields: 'User Name' with 'admin' and a dropdown arrow, and 'Password' with a masked field. At the bottom are 'OK' and 'Cancel' buttons.

Step 6. Befolgen Sie die Anweisungen des Konfigurationsassistenten, um das Netzwerk-Kameras.



The 'Wizard' dialog box has a red title bar and a table with columns: No., IP Address, Security, Amount of..., Device M..., and Protocol. It also features a navigation bar with 'One-touch A...', 'Add', and 'Search' buttons, and a bottom bar with 'Previous', 'Next', and 'Exit' buttons.

No.	IP Address	Security	Amount of...	Device M...	Protocol
1	10.16.1.93	Active	1	(null)	HIKVISION
2	192.168.1.64	Active	1	DS-2ZMN...	HIKVISION
3	10.16.1.14	Active	1	DS-2CD2...	HIKVISION

Step 7. Sie können Betriebs- und Gerätefunktionen wie Liveansicht, Aufnahmezeitplan, Wiedergabe, Backup usw. konfigurieren.



(Optional) Sie können sich über einen Webbrowser beim DVR anmelden, um ihn zu konfigurieren und zu bedienen. Dazu geben Sie die IP-Adresse des Geräts ein und drücken Sie die Eingabetaste.



Viel Spaß mit Ihrem Conceptronic CCTV Surveillance Kit!

Conceptronic CCTV Surveillance Kit

1. Contenu du Coffret

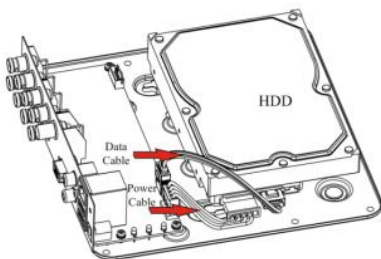
Les éléments suivants se trouvent dans l'emballage de votre Conceptronic CCTV Surveillance Kit:

- DVR x 1
- Camera x 4
- 18m BNC Cables x 4
- Splitter Cable x 1
- Power Adaptor x 1
- USB Mouse x 1
- Resource CD x 1
- QIG x 1

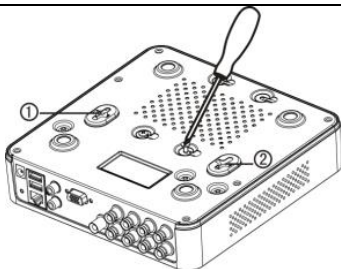
2. Installation & Utilisation

Step 1. Installez le disque dur.

- 1) Desserrez les vis et retirez le capot.
- 2) Raccordez le câble des données et le câble d'alimentation au disque dur.



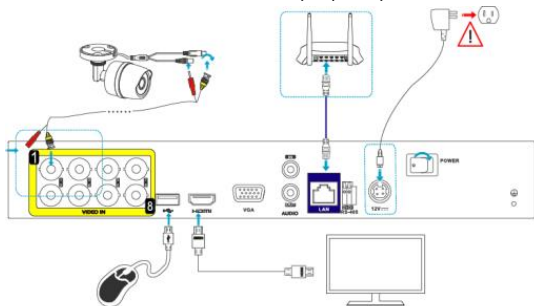
- 3) Positionnez le disque dur au bas de l'appareil et fixez-le.



4) Réinstallez le capot du DVR et serrez les vis.

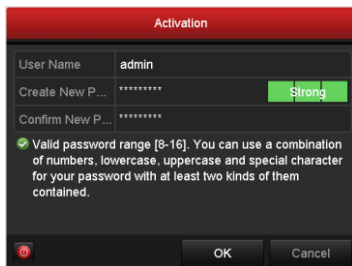
Remarque : Les étapes de l'installation du disque dur varient selon les modèles d'appareil.

Step 2. Raccordez les éventuels périphériques au DVR.

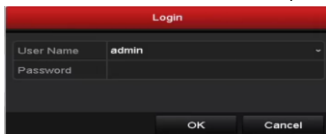


Step 3. Mettez le DVR sous tension.

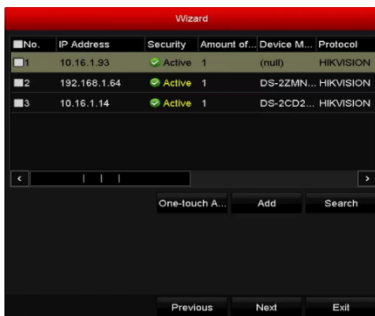
Step 4. Activez le DVR pour un premier accès à celui-ci. Saisissez un mot de passe robuste et confirmez-le.



Step 5. Connectez-vous au DVR. Saisissez le mot de passe administrateur.



Step 6. Suivez l'assistant d'installation notamment pour configurer le réseau caméras.



Step 7. Vous pouvez procéder à la configuration et à l'exploitation de l'appareil, notamment effectuer un affichage en direct, planifier et lire un enregistrement, ou encore effectuer une sauvegarde.



(Facultatif) Vous pouvez également utiliser un navigateur Web pour vous connecter au DVR, et le configurer et l'exploiter. Saisissez l'adresse IP de l'appareil puis appuyez sur Entrée.



Profitez de votre Conceptronic CCTV Surveillance Kit!

Conceptronic CCTV Surveillance Kit

1. Contenido del paquete

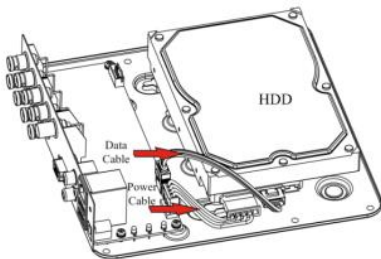
El paquete contiene los siguientes artículos de Conceptronic CCTV Surveillance Kit:

- DVR x 1
- Camera x 4
- 18m BNC Cables x 4
- Splitter Cable x 1
- Power Adaptor x 1
- USB Mouse x 1
- Resource CD x 1
- QIG x 1

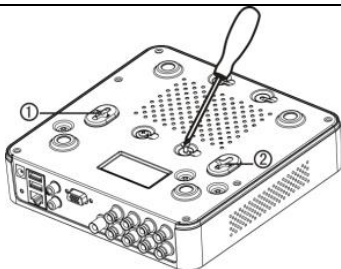
2. Instalación & Utilización

Step 1. Instalar la unidad HDD.

- 1) Afloje los tornillos y retire la cubierta.
- 2) Conecte el cable de datos y el cable de alimentación a la HDD.



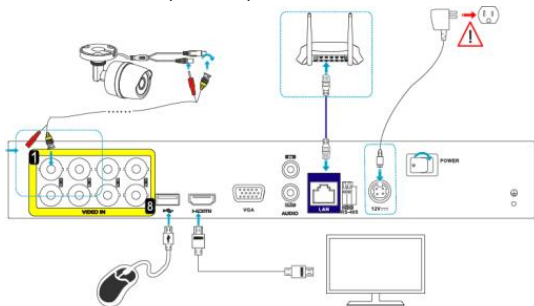
- 3) Coloque la HDD en la parte inferior del dispositivo y fijela.



4) Volver a colocar la cubierta del DVR y apretar los tornillos.

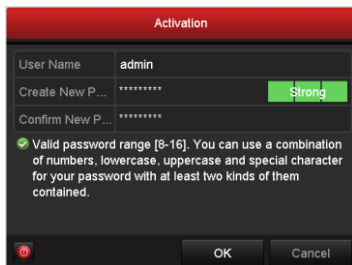
Nota: Los pasos de la instalación de la HDD varían en función de los diferentes modelos.

Step 2. Conectar los dispositivos periféricos al DVR.

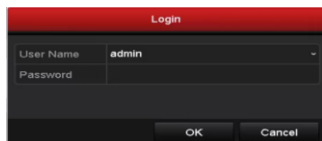


Step 3. Encender el DVR.

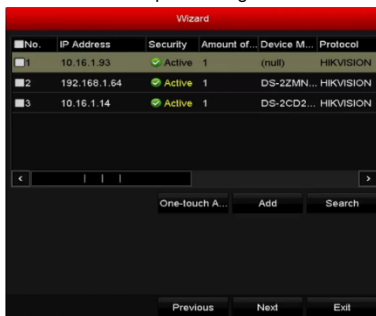
Step 4. Activar el DVR para realizar un acceso inicial. Introducir una contraseña segura y confirmar.



Step 5. Iniciar sesión en el DVR. Introducir la contraseña de administrador.



Step 6. Seguir el asistente de instalación para configurar la red cámaras.



Step 7. Puede realizar el funcionamiento y la configuración del dispositivo, incluyendo live view, programación de grabaciones, reproducción, copia de seguridad, etc.



(Opcional) También puede iniciar sesión en el DVR para configurarlo y operarlo a través del navegador web. Introduzca la dirección IP del dispositivo y, a continuación, pulse Intro.



¡Disfrute del uso de su Conceptronic CCTV Surveillance Kit!

Conceptronic CCTV Surveillance Kit

1. Pakkens indhold

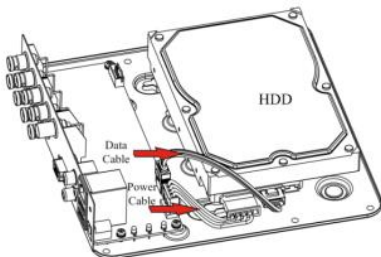
La confezione di Conceptronic CCTV Surveillance Kit contiene gli elementi che seguono:

- DVR x 1
- Camera x 4
- 18m BNC Cables x 4
- Splitter Cable x 1
- Power Adaptor x 1
- USB Mouse x 1
- Resource CD x 1
- QIG x 1

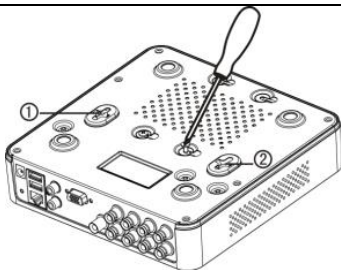
2. Installazione & Uso

Step 1. Installare l'HDD.

- 1) Allentare le viti e rimuovere il coperchio.
- 2) Collegare il cavo dati e il cavo di alimentazione all'HDD.



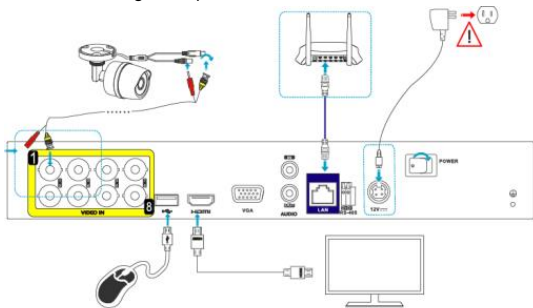
- 3) Posizionare l'HDD sul fondo del dispositivo e fissarlo.



4) Re-installare il coperchio del DVR e serrare le viti.

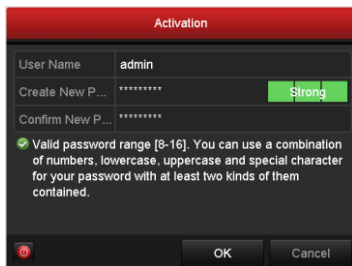
Nota: La procedura di installazione dell'HDD varia a seconda dei diversi modelli.

Step 2. Collegare le periferiche al DVR.

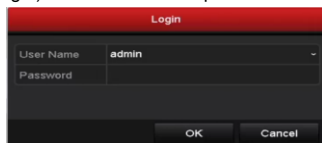


Step 3. Accendere il DVR.

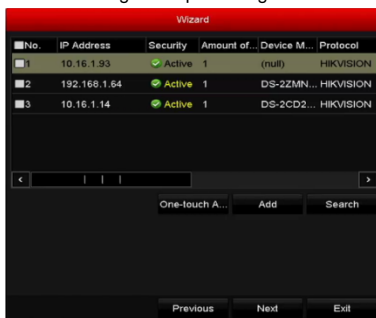
Step 4. Attivare il DVR per l'accesso iniziale. Inserire una password sicura e confermarla.



Step 5. Accedere (login) al DVR. Inserire la password dell'amministratore.



Step 6. Seguire l'installazione guidata per configurare la rete videocamere.



Step 7. È possibile operare e configurare il dispositivo, inclusi vista live, programmazione registrazioni, playback, backup, ecc.



(Opzionale) È possibile anche accedere al DVR per configurarlo e gestirlo tramite browser web. Inserire l'indirizzo IP del dispositivo e premere Invio.



Godetevi l'uso di Conceptronic CCTV Surveillance Kit!

Conceptronic CCTV Surveillance Kit

1. Conteúdo da embalagem

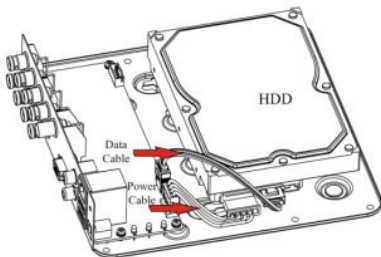
A embalagem do Conceptronic CCTV Surveillance Kit contém os seguintes itens:

- DVR x 1
- Camera x 4
- 18m BNC Cables x 4
- Splitter Cable x 1
- Power Adaptor x 1
- USB Mouse x 1
- Resource CD x 1
- QIG x 1

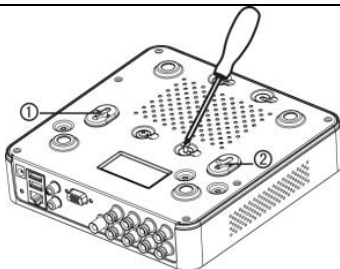
2. Instalação & Utilização

Passo 1. Instalar o HDD.

- 1) Desaperte os parafusos e remova a tampa.
- 2) Ligue o cabo de dados e o cabo de alimentação ao HDD.



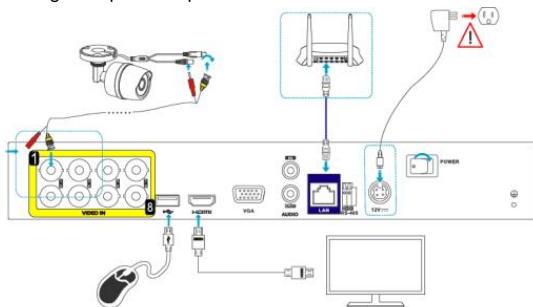
- 3) Coloque o HDD na parte inferior do dispositivo e fixe-o.



4) Volte a colocar a tampa do DVR e aperte os parafusos.

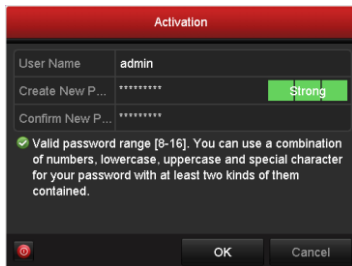
Nota: Os passos de instalação do HDD podem variar de acordo com os diferentes modelos.

Passo 2. Ligue dispositivos periféricos ao DVR.

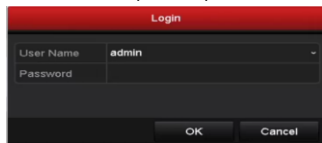


Passo 3. Ligue o DVR.

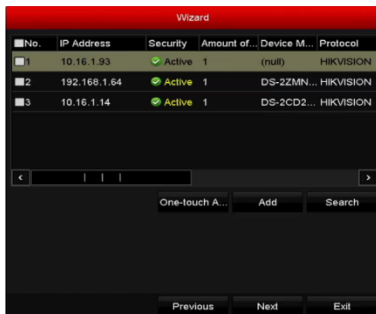
Passo 4. Ative o DVR para acesso inicial. Introduza uma palavra-passe forte e confirme-a.



Passo 5. Inicie sessão no DVR. Introduza a palavra-passe de administrador.



Passo 6. Siga os passos do Assistente de Configuração para configurar as câmaras de rede.



Passo 7. Pode executar a operação e configuração do dispositivo, incluindo a vista em direto, programação de gravação, reprodução, cópia de segurança, etc.



(Opcional) Pode também iniciar sessão no DVR para configurar e controlar através do navegador web. Introduza o endereço IP do dispositivo e prima Enter.



Desfrute do seu Conceptronic CCTV Surveillance Kit!

Conceptronic CCTV Surveillance Kit

1. Комплект поставки

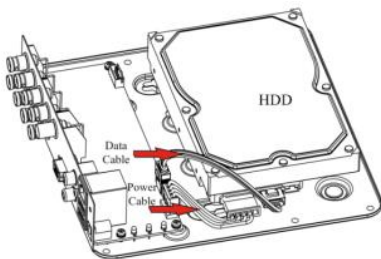
В комплекте Conceptronic CCTV Surveillance Kit имеются следующие предметы:

- DVR x 1
- Camera x 4
- 18m BNC Cables x 4
- Splitter Cable x 1
- Power Adaptor x 1
- USB Mouse x 1
- Resource CD x 1
- QIG x 1

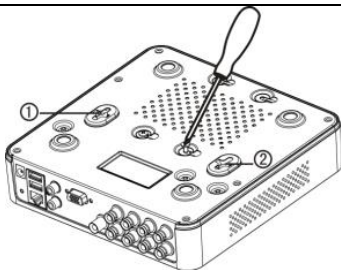
2. Установка & использование

Шаг 1. Установите жесткий диск.

- 1) Отвинтите винты и снимите крышку.
- 2) Подключите к жесткому диску кабель передачи данных и кабель питания.



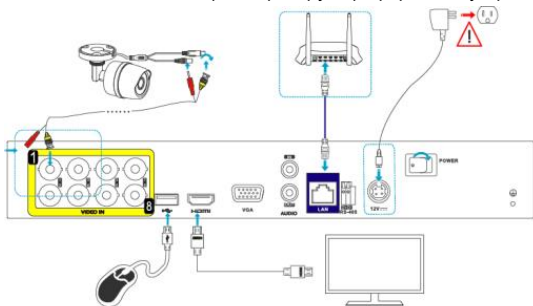
- 3) Поместите жесткий диск на нижнюю панель видеорегистратора и закрепите его.



4) Установите крышку на видеорегистратор и закрепите ее винтами.

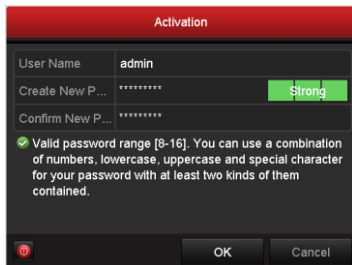
Примечание. Процедура установки жесткого диска может отличаться в зависимости от модели.

Шаг 2. Подключите к видеорегистратору периферийные устройства.

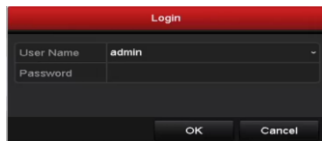


Шаг 3. Включите видеорегистратор.

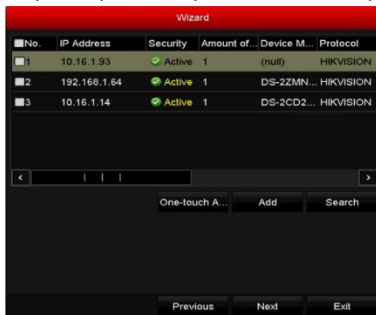
Шаг 4. Активируйте видеорегистратор для первоначального доступа. Введите пароль и подтвердите его.



Шаг 5. Выполните вход в интерфейс видеорегистратора. Введите пароль администратора.



Шаг 6. С помощью мастера настройки настройте сетевые камеры.



Шаг 7. Теперь можно эксплуатировать и настраивать видеорегистратор, в том числе использовать функции просмотра в реальном времени, записи по расписанию, воспроизведения, резервного копирования и т.п.



(Необязательно.) Также можно выполнить вход в интерфейс видеорегистратора для его настройки и эксплуатации с помощью веб-браузера. Для этого введите IP-адрес видеорегистратора и нажмите клавишу «Ввод».



***Желаем вам приятного использования
Conceptronic CCTV Surveillance Kit!***

Conceptronic CCTV Surveillance Kit

1. Zawartość opakowania

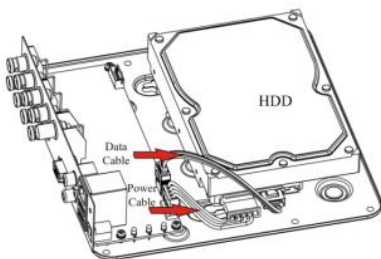
Na opakowaniu Conceptronic CCTV Surveillance Kit znajdują się następujące elementy.

- DVR x 1
- Camera x 4
- 18m BNC Cables x 4
- Splitter Cable x 1
- Power Adaptor x 1
- USB Mouse x 1
- Resource CD x 1
- QIG x 1

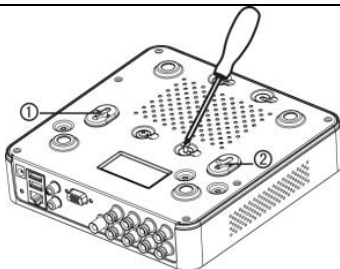
2. Instalacji & stosowanie

Krok 1. Zainstaluj dysk twardy.

- 1) Poluzuj śruby i zdejmij pokrywę.
- 2) Podłącz do dysku twardego kabel danych i kabel zasilający.



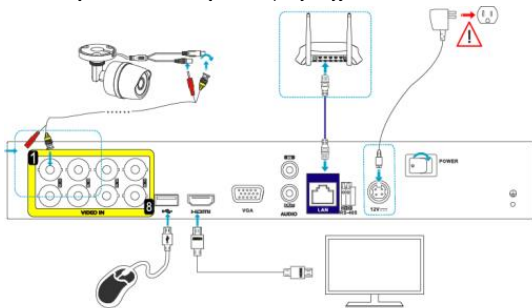
- 3) Umieść dysk twardy w dolnej części urządzenia i zamocuj go.



4) Zainstaluj ponownie pokrywę DVR i zamocuj śrubami.

Uwaga: Czynności instalacji dysku twardego zależą od modelu.

Krok 2. Podłącz do DVR urządzenia peryferyjne.



Krok 3. Włącz zasilanie DVR.

Krok 4. Uaktywnij DVR w celu początkowego dostępu. Wprowadź silne hasło i potwierdź je.

Activation

User Name admin

Create New P... ***** Strong

Confirm New P... *****

Valid password range [8-16]. You can use a combination of numbers, lowercase, uppercase and special character for your password with at least two kinds of them contained.

OK Cancel

Krok 5. Zaloguj się do DVR. Wprowadź hasło administratora.

Login

User Name admin

Password

OK Cancel

Krok 6. Wykonaj polecenia kreatora instalacji w celu konfiguracji kamer sieciowych.

Wizard

No.	IP Address	Security	Amount of...	Device M...	Protocol
1	10.16.1.93	Active	1	(null)	HIKVISION
2	192.168.1.64	Active	1	DS-2ZMN...	HIKVISION
3	10.16.1.14	Active	1	DS-2CD2...	HIKVISION

One-touch A... Add Search

Previous Next Exit

Krok 7. Wykonywać można czynności obsługi i konfiguracji urządzenia, włącznie z widokiem na żywo, harmonogramem nagrywania, odtwarzaniem, wykonywaniem kopii zapasowej, itd..



(Opcjonalnie) Można także załogować do DVR w celu konfiguracji i obsługi przez przeglądarkę internetową. Wprowadź adres IP urządzenia, a następnie naciśnij Enter.



Rozpocznij korzystanie z Conceptronic CCTV Surveillance Kit!